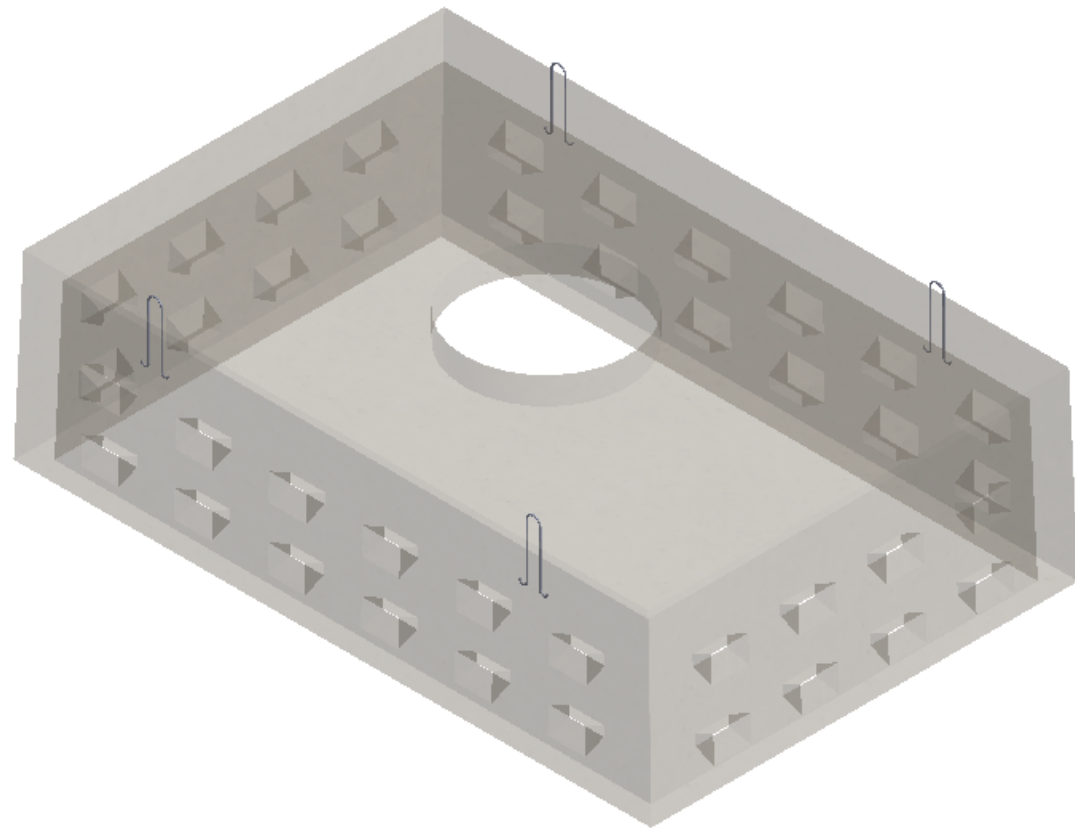
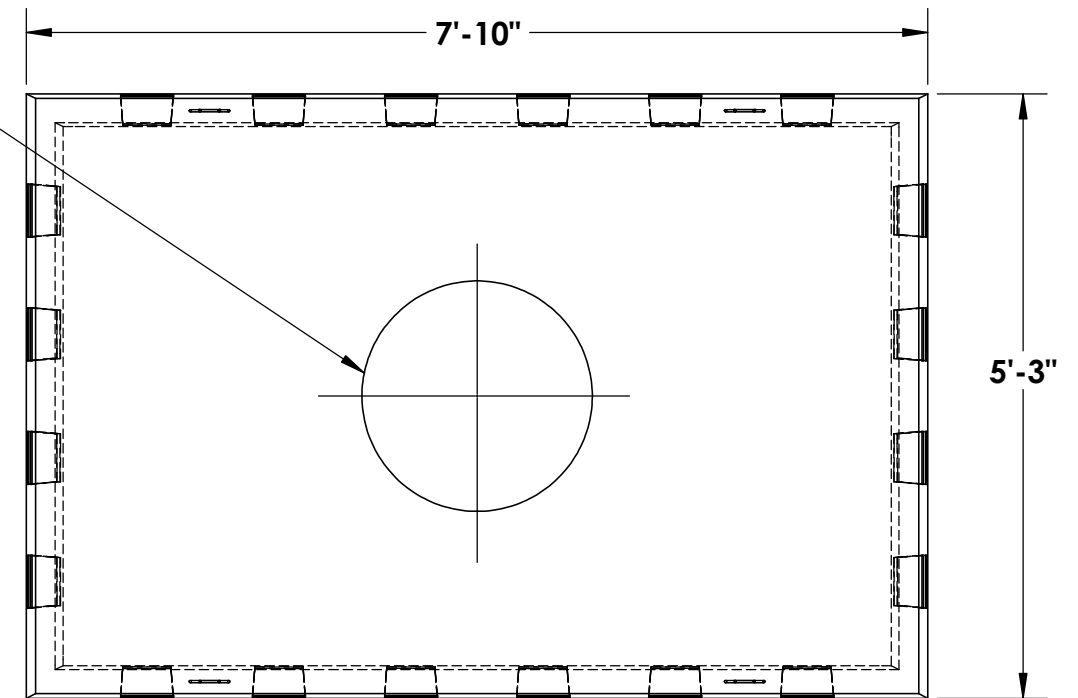


500 GALLON LOW PROFILE DRYWELL



WEIGHT: 3,680#
CUBIC YARDS: 0.91

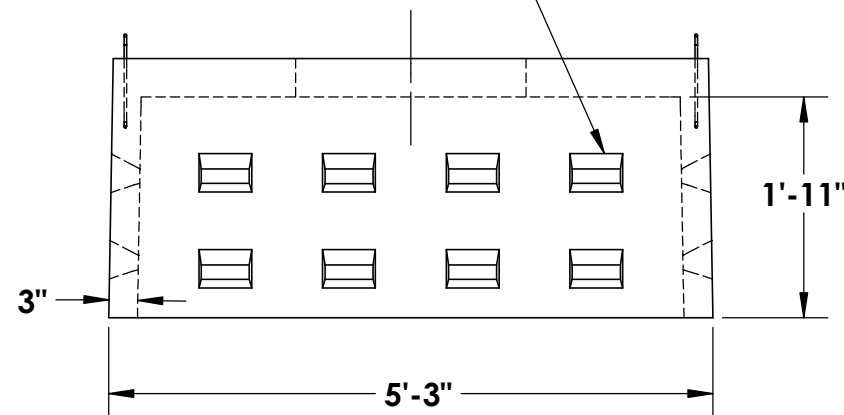
Ø24" OPENING



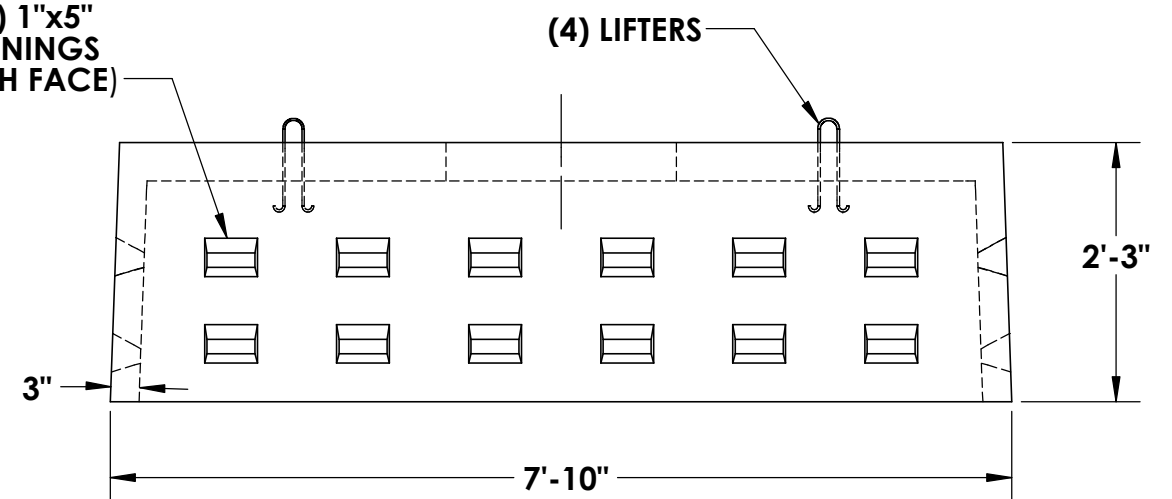
CONCRETE:
4,000 PSI MIN

REINFORCEMENT:
6x6 10 GA. WIRE MESH THROUGHOUT

(8) 1"x5" OPENINGS (EACH FACE)



(12) 1"x5" OPENINGS (EACH FACE)



© INLAND NORTHWEST PRECAST



INLAND NORTHWEST PRECAST

5516 NORTH STARR RD PO BOX 610, NEWMAN LAKE, WA 99025 (509) 226-5050

DRYWELLS ARE CONSTRUCTED IN ACCORDANCE WITH THE REQUIREMENTS OF ASTM C478, AASHTO M-199, & ASTM C443