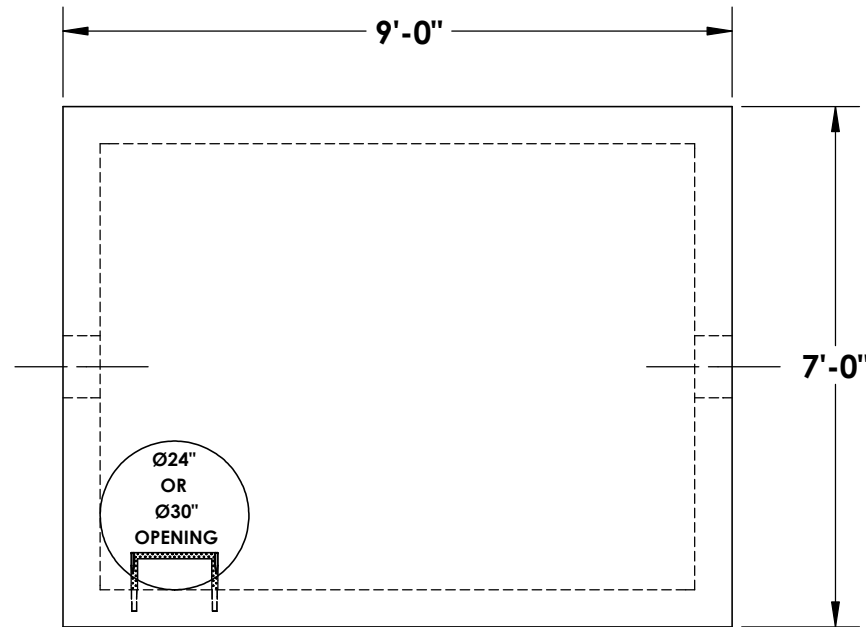


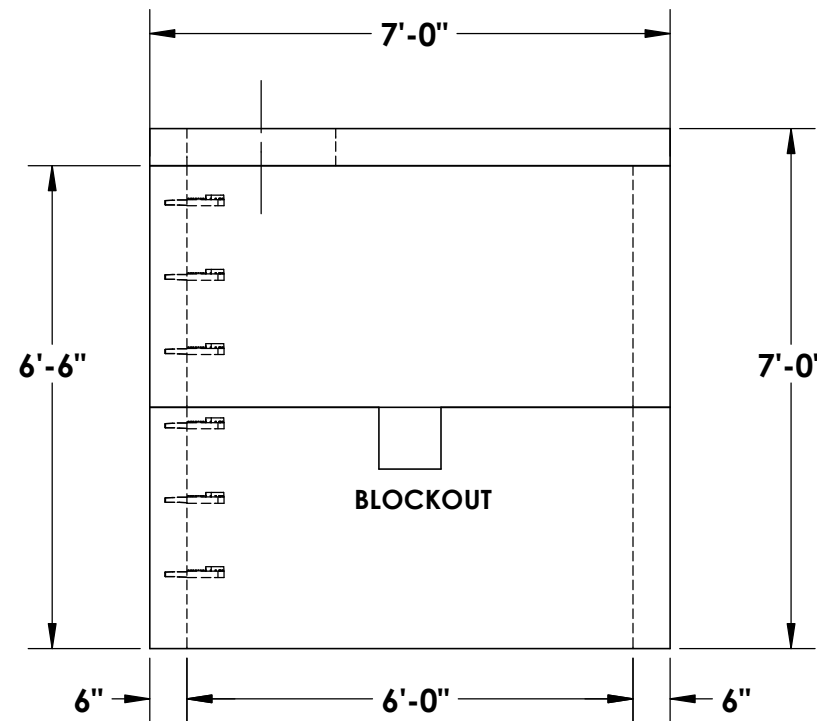
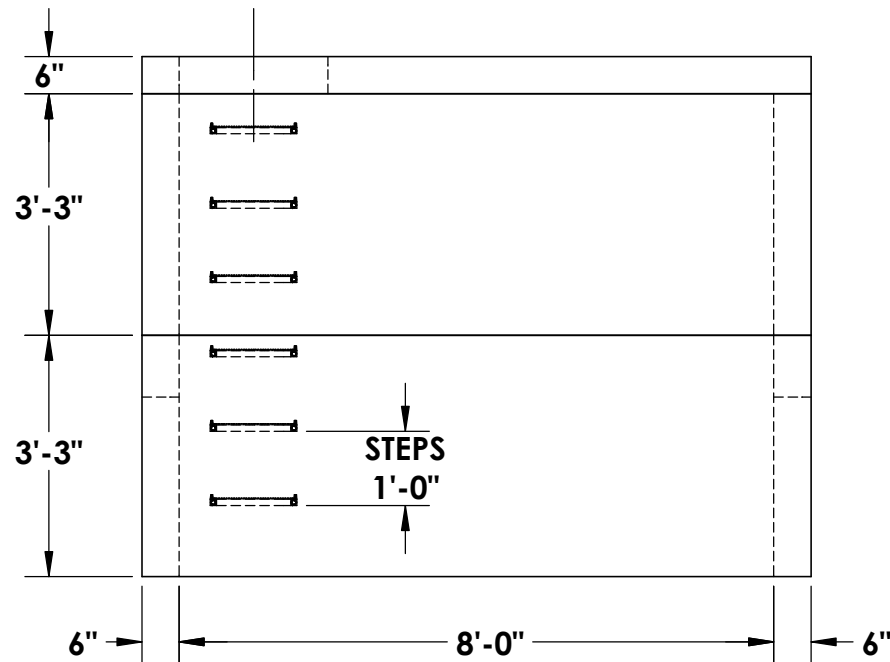
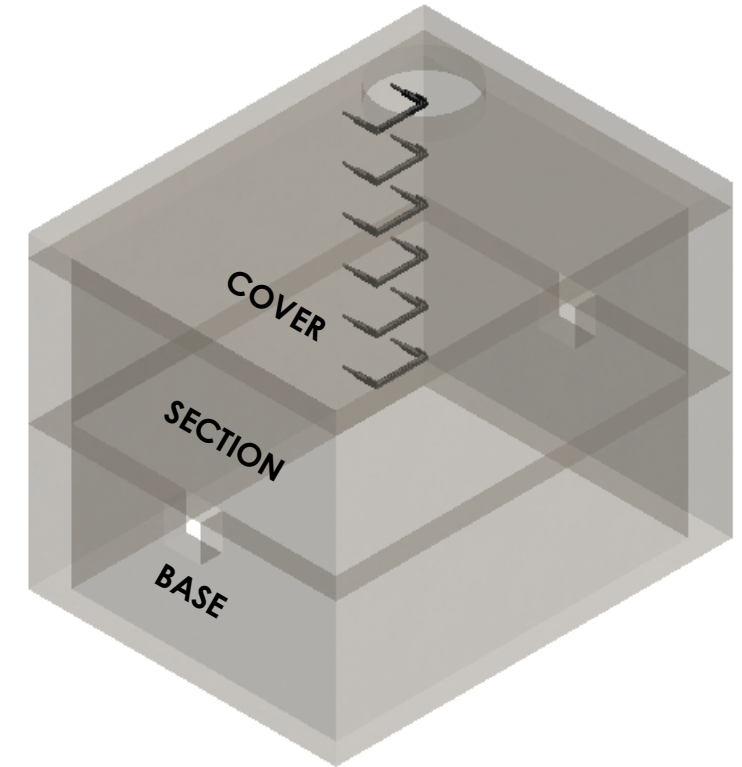
# 6'x8' UTILITY VAULT



~ COVER  
4,490# (1.11 CU/YDS)

~ SECTION  
7,310# (1.81 CU/YDS)

~ BASE  
7,210# (1.78 CU/YDS)



**CONCRETE:**

4,000 PSI MINIMUM

**REINFORCEMENT:**

#4 BAR @ 12" O.C.E.W. THROUGHOUT

**BLOCKOUT:**

SIZES AVAILABLE UPON REQUEST

**\*COVER AVAILABLE IN TRAFFIC RATED (8" THICK)**

© INLAND NORTHWEST PRECAST



## INLAND NORTH WEST PRECAST

5516 NORTH STARR RD PO BOX 610, NEWMAN LAKE, WA 99025 (509) 226-5050



ALL UTILITY VAULTS MEET AND ARE CONSTRUCTED IN ACCORDANCE WITH ASTM C858