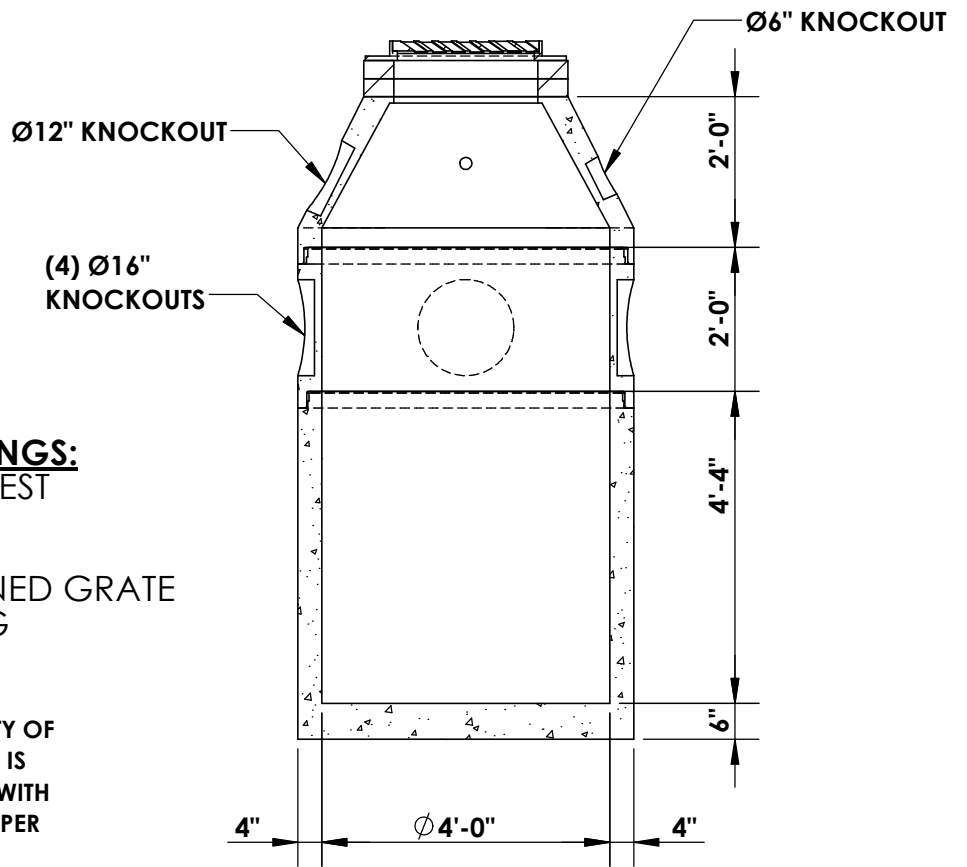
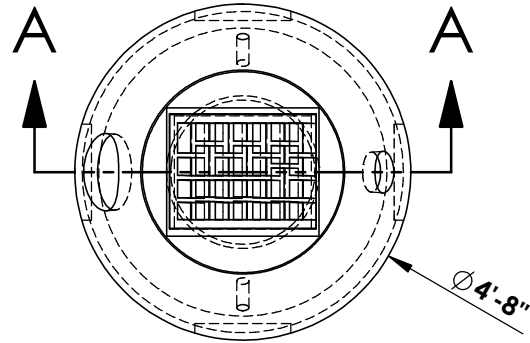
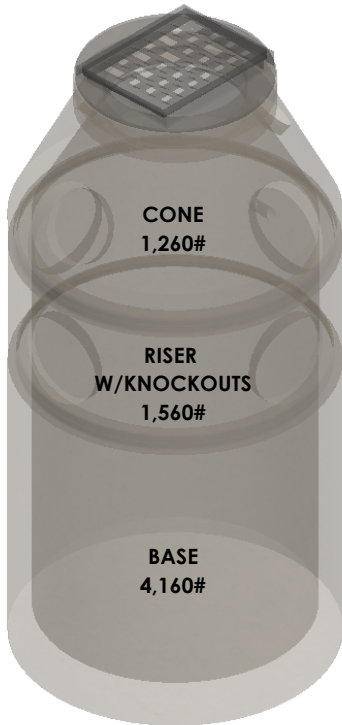


CITY OF SPOKANE TYPE 1 & 3 CATCH BASIN



SECTION A-A

***CONCRETE:**
4,000 PSI MIN.

***ROUND ADJUSTMENT RINGS:**
AVAILABLE UPON REQUEST

***CAST-IRON**
~ TYPE 1 - FRAME & VANED GRATE
~ TYPE 3 - HOODED F&G

~ STRUCTURE MEETS OR EXCEEDS CITY OF SPOKANE STANDARD B-101C AND IS CONSTRUCTED IN ACCORDANCE WITH WITH ASTM C858 & AASHTO M199 PER WSDOT SPEC. 9-05.50(1)



INLAND NORTHWEST PRECAST



516 NORTH STARR RD PO BOX 610, NEWMAN LAKE, WA 99025 ~ (509) 226-5050 ~ www.inwprecast.com