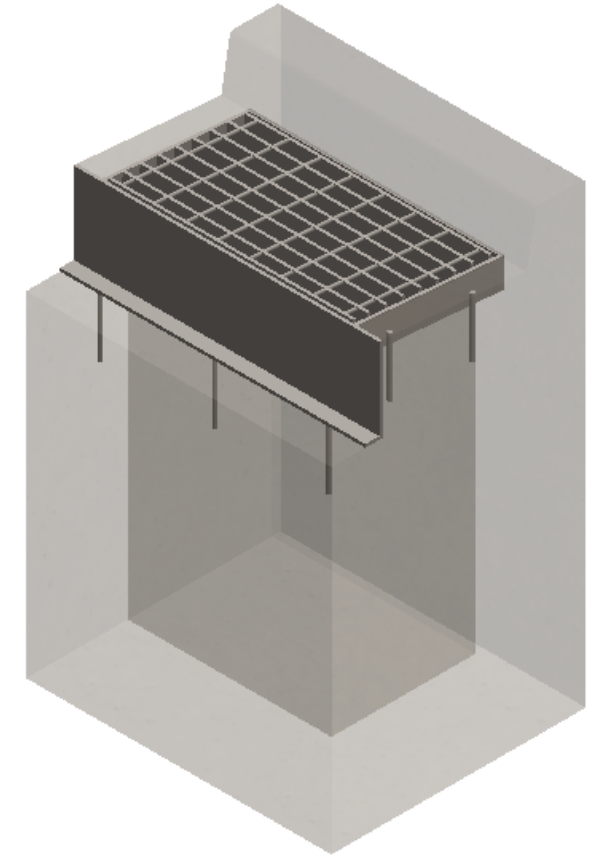
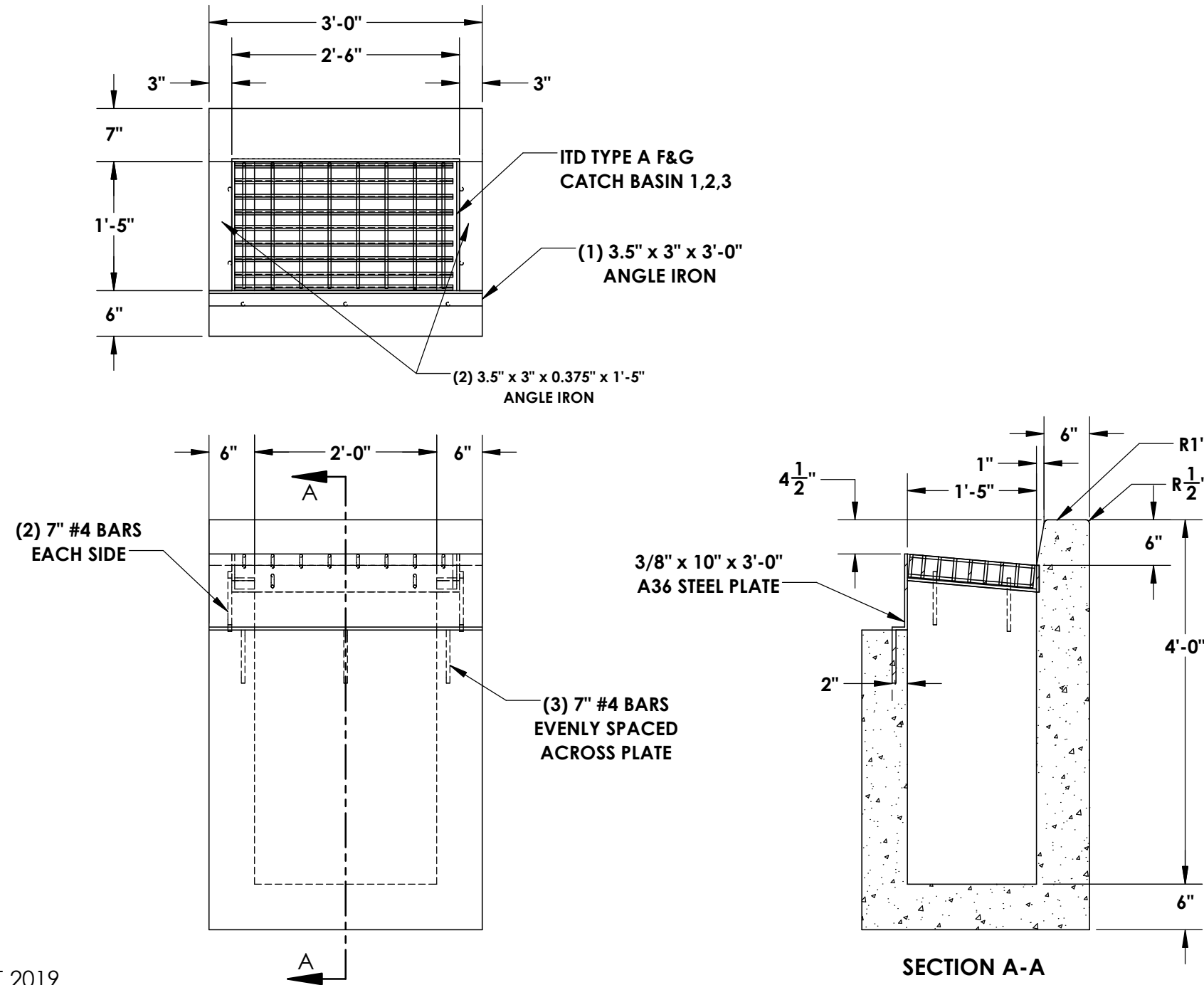




IDAHO TRANSPORTATION DEPARTMENT - TYPE 1 CATCH BASIN



WEIGHT: 3,000# (0.75 CU/YDS)

© INLAND NORTHWEST PRECAST 2019



5204 NORTH STARR RD PO BOX 610
NEWMAN LAKE, WA 99025
(509) 226-5050
www.inwprecast.com



*THIS UNIT IS BUILT IN ACCORDANCE WITH ASTM C 913 & CONFORM TO SECTION 609 - MINOR STRUCTURES OF THE CURRENT ITD STANDARD SPECIFICATIONS FOR HIGHWAY CONSTRUCTION
*CONSTRUCTED WITH 4,000 PSI SELF-CONSOLIDATED CONCRETE
*#4 REBAR REINFORCEMENT SPACED EVENLY THROUGHOUT



INLET TYPE 8

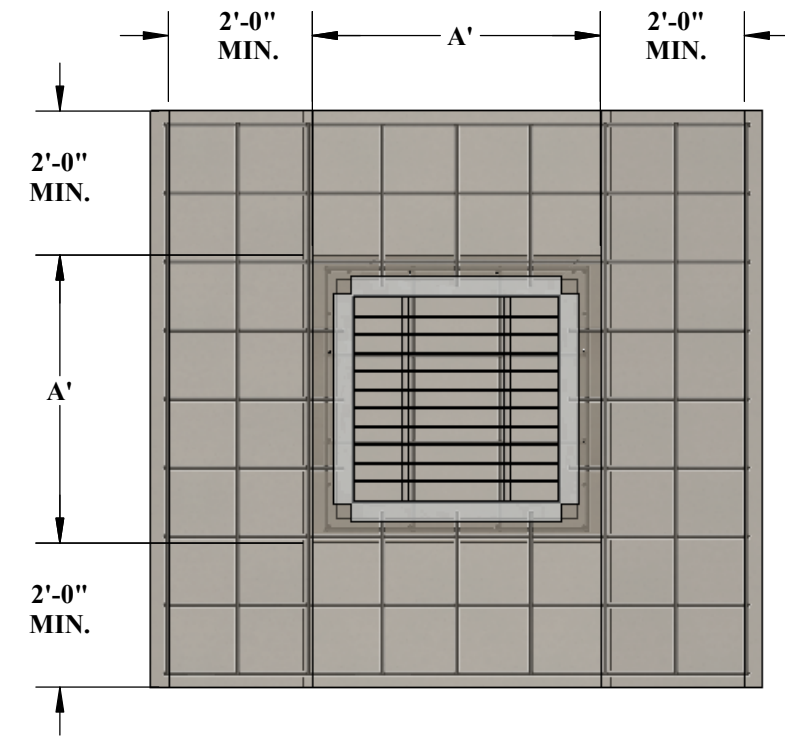
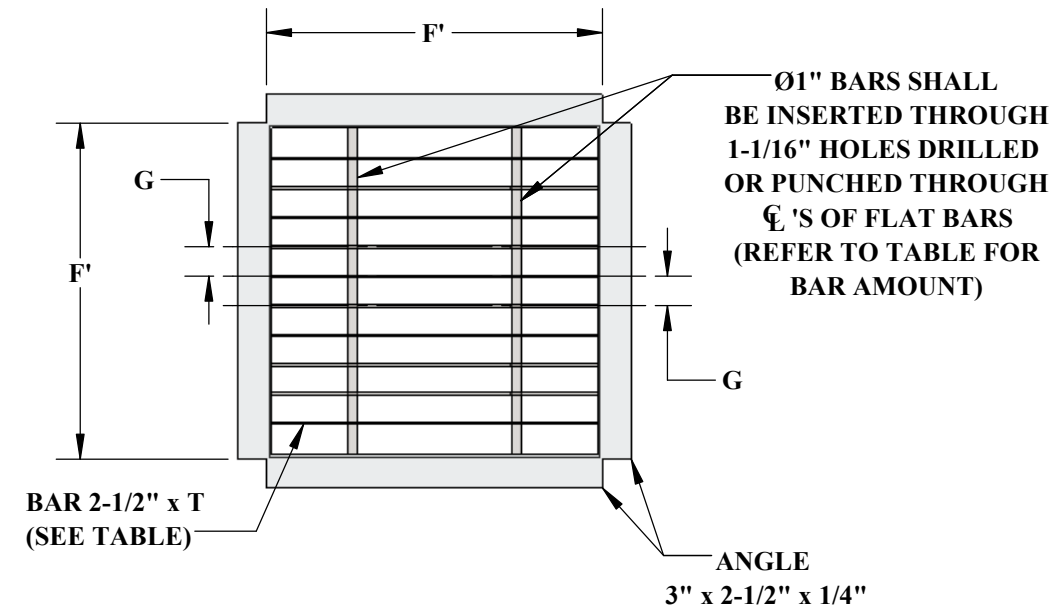
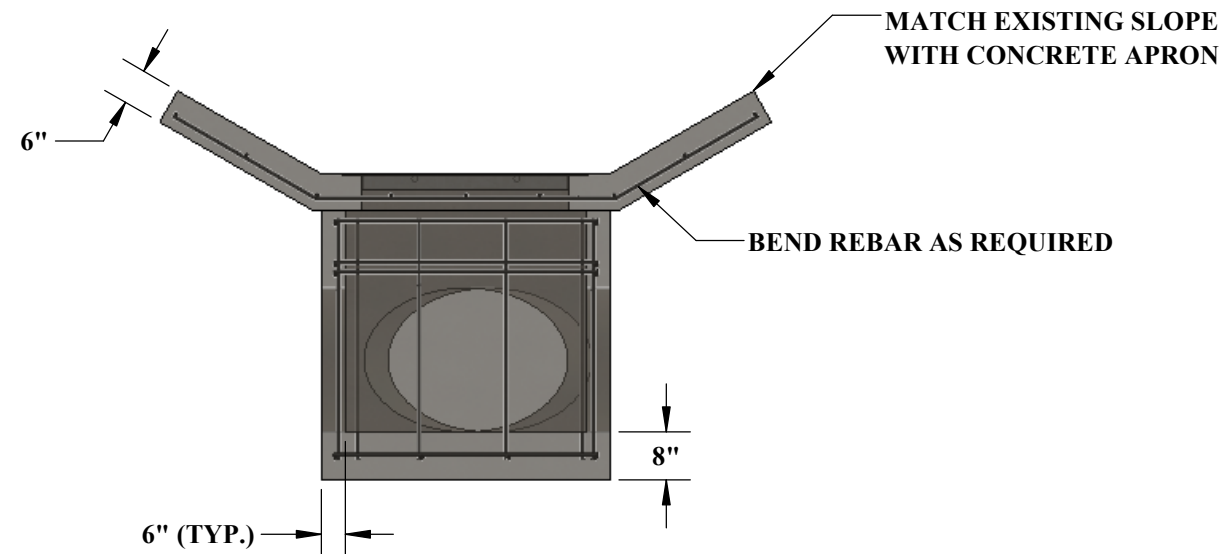
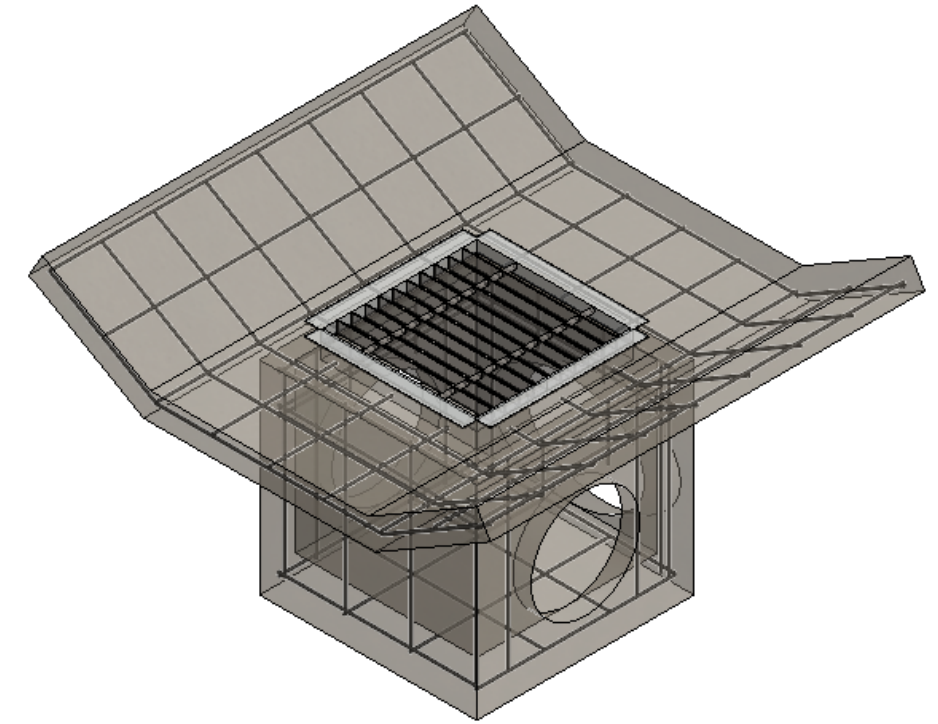


TABLE OF DIMENSIONS						
D'	A'	B' MIN.	F'	G	BARS (EA.)	T
18"	3'-4"	3'-0"	2'-3"	3"	1	1/4"
24"	4'-0"	3'-7"	2'-11"	3-3/16"	2	1/4"
30"	4'-6"	4'-3"	3'-5"	3-1/8"	3	5/16"
36"	5'-0"	4'-9"	3'-11"	3-1/8"	3	3/8"
48"	6'-0"	5'-2"	4'-11"	3-3/8"	4	7/16"



*CONCRETE
4,000 PSI MIN.



5204 NORTH STARR RD PO BOX 610
NEWMAN LAKE, WA 99025
(509) 226-5050
www.inwprecast.com

