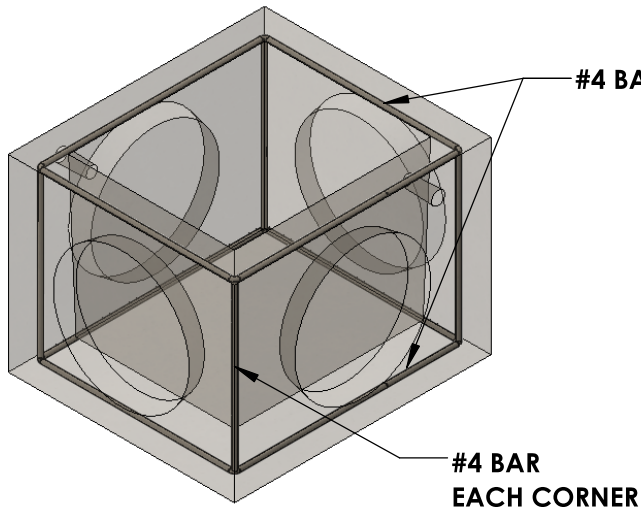
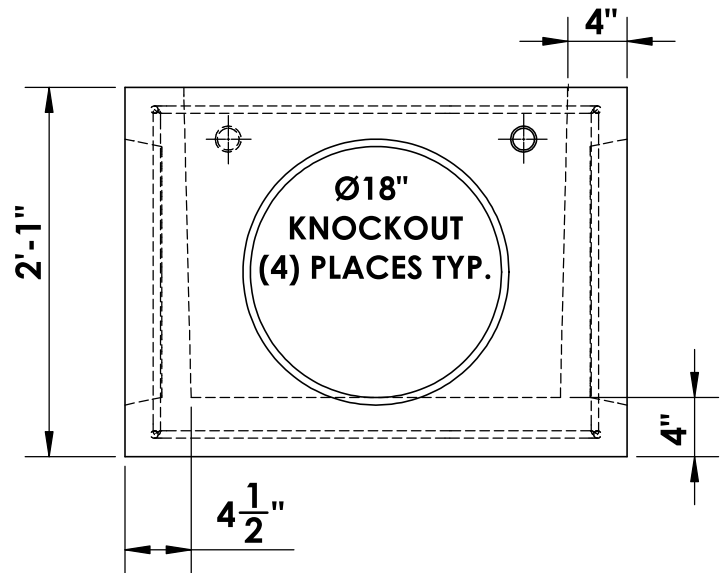
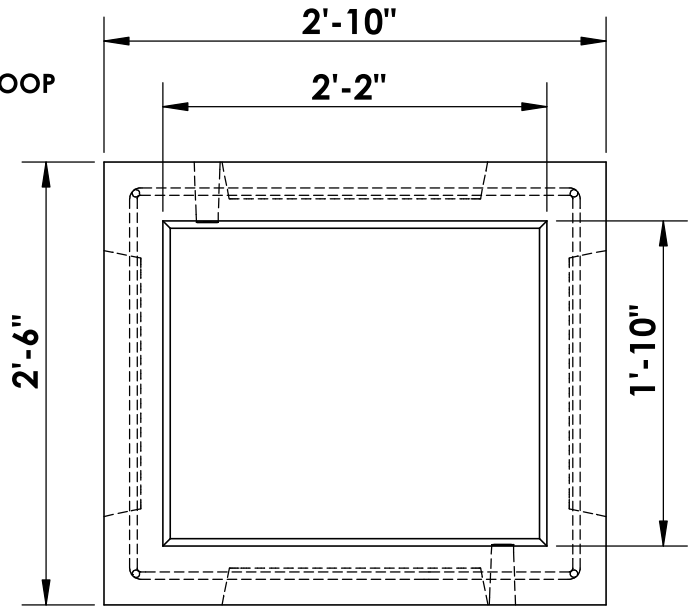




CONCRETE INLET



WEIGHT: 1,000#



* **CONCRETE:**
4,000 PSI MIN.

* **SQUARE GRADE ADJUSTMENT RINGS:**
AVAILABLE UPON REQUEST

* **CAST-IRON FRAME & GRATE:**
AVAILABLE UPON REQUEST

~ STRUCTURE MEETS OR EXCEEDS WSDOT STANDARD
PLAN B-25.60-02 AND IS CONSTRUCTED IN ACCORDANCE
WITH ASTM C858

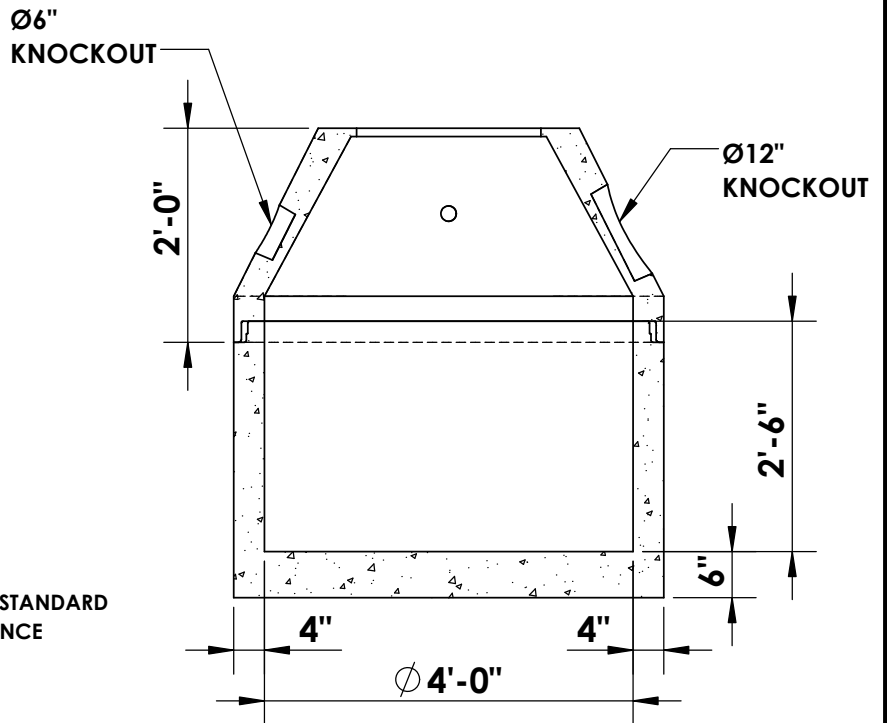
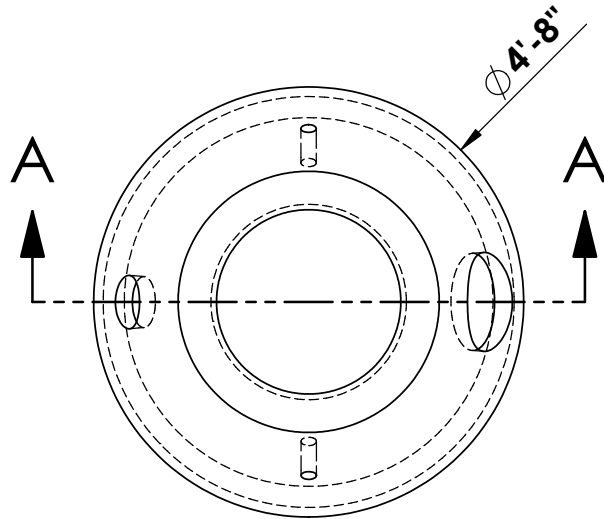


5204 NORTH STARR RD PO BOX 610
NEWMAN LAKE, WA 99025
(509) 226-5050
www.inwprecast.com





TYPE 0 CATCH BASIN



* **CONCRETE:**
4,000 PSI MIN.

* **ROUND GRADE ADJUSTMENT RINGS**
AVAILABLE UPON REQUEST

* **CAST-IRON FRAME & GRATE**
AVAILABLE UPON REQUEST

~ STRUCTURE MEETS OR EXCEEDS CITY OF SPOAKNE STANDARD
PLAN B-101b AND IS CONSTRUCTED IN ACCORDANCE
WITH ASTM C858 & AASHTO M199

© INLAND NORTHWEST PRECAST

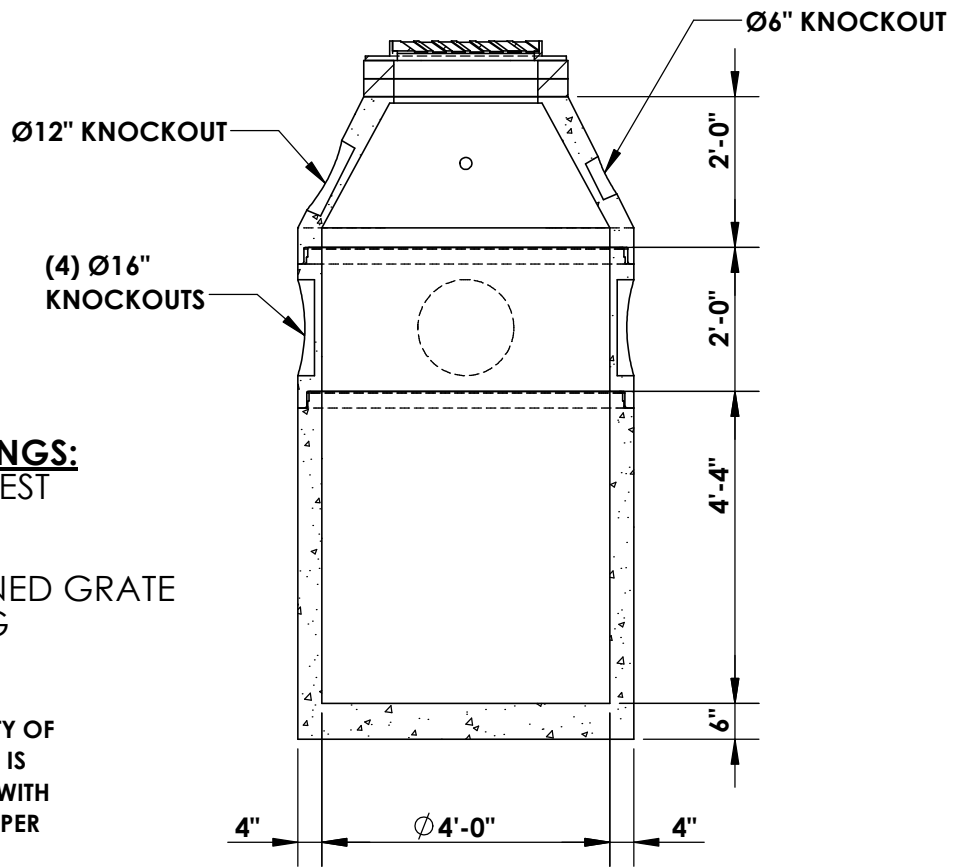
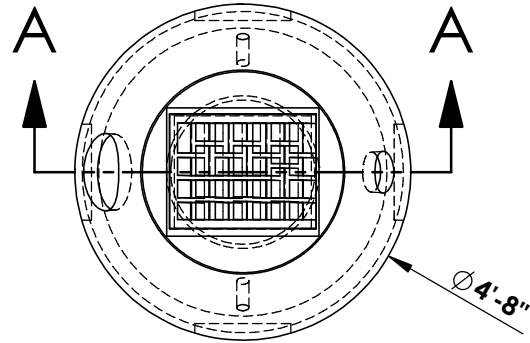
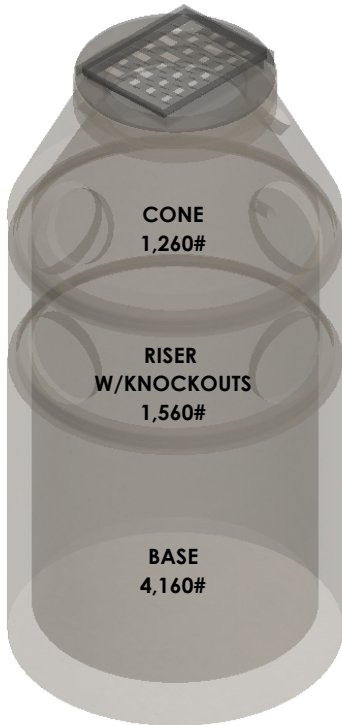


5204 NORTH STARR RD PO BOX 610
NEWMAN LAKE, WA 99025
(509) 226-5050
www.inwprecast.com





CITY OF SPOKANE TYPE 1 & 3 CATCH BASINS



SECTION A-A

***CONCRETE:**
4,000 PSI MIN.

***ROUND ADJUSTMENT RINGS:**
AVAILABLE UPON REQUEST

***CAST-IRON**
~ TYPE 1 - FRAME & VANED GRATE
~ TYPE 3 - HOODED F&G

~ STRUCTURE MEETS OR EXCEEDS CITY OF SPOKANE STANDARD B-101C AND IS CONSTRUCTED IN ACCORDANCE WITH WITH ASTM C858 & AASHTO M199 PER WSDOT SPEC. 9-05.50(1)

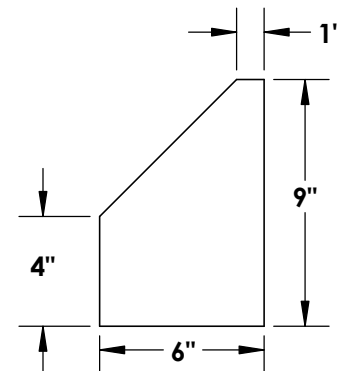
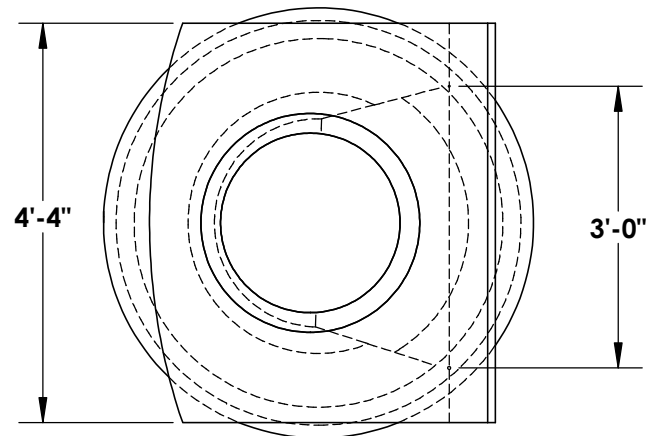


5204 N STARR RD
NEWMAN LAKE, WA 99025
(509) 226-5050
www.inwprecast.com

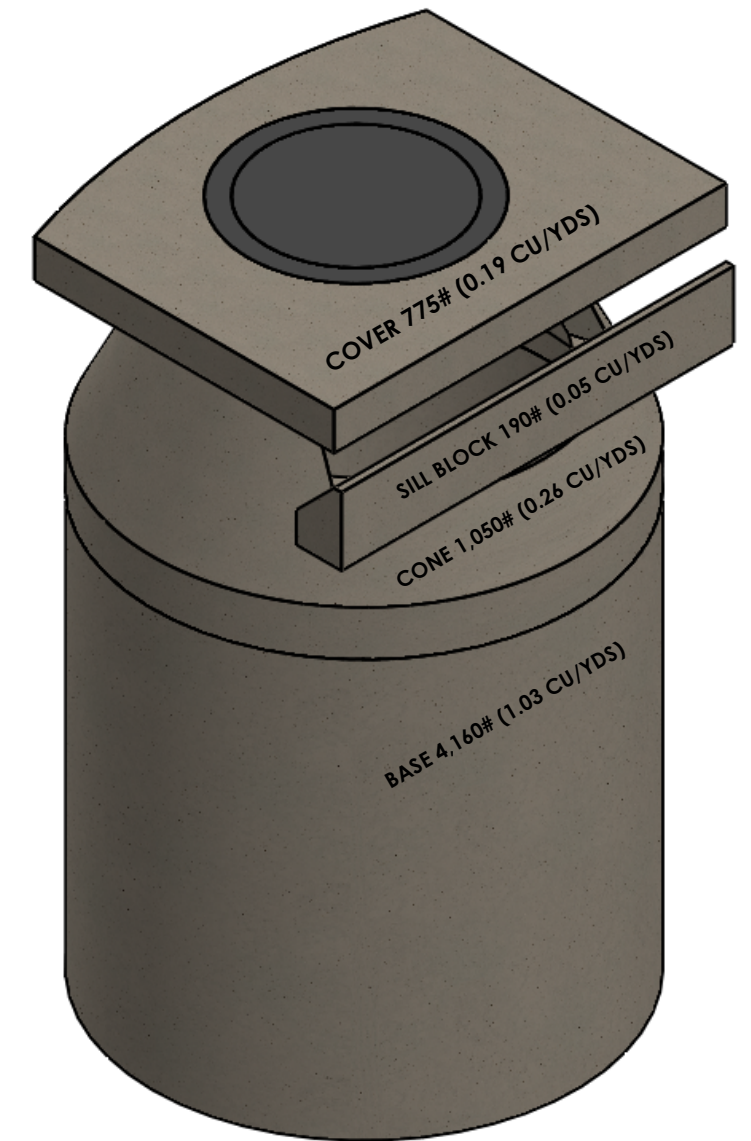
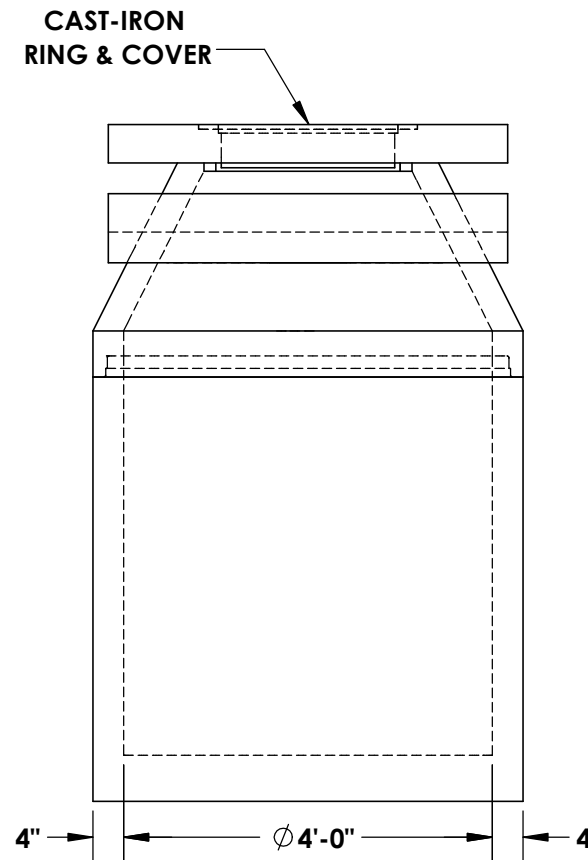
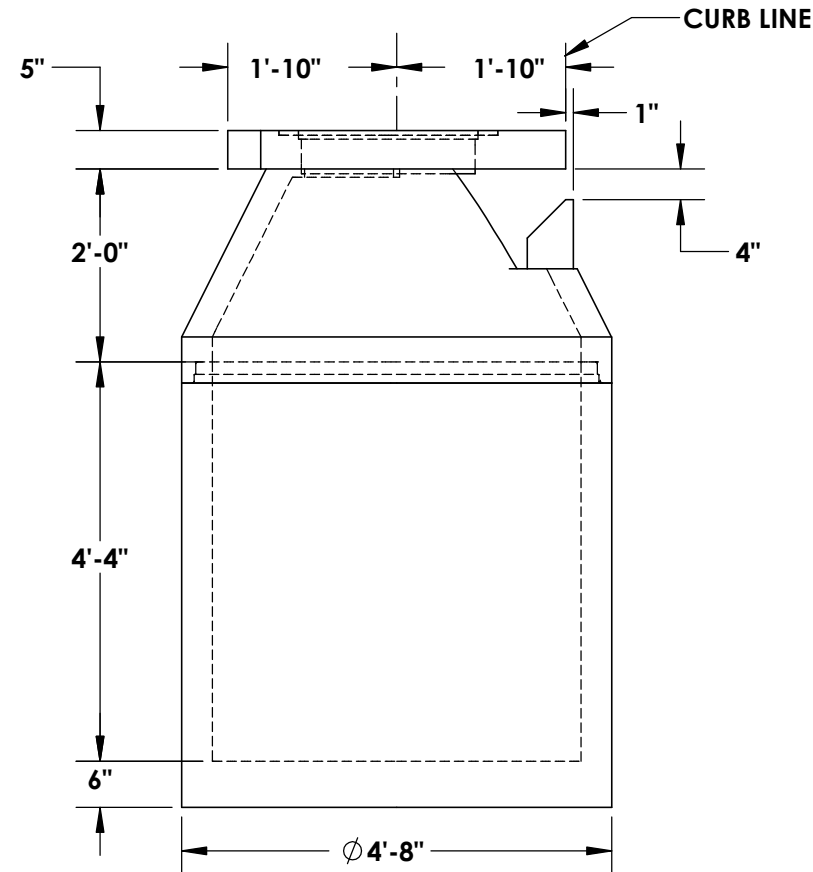




TYPE 2 CATCH BASIN - CITY OF SPOKANE



SILL BLOCK DETAIL



© INLAND NORTHWEST PRECAST



5204 NORTH STARR RD PO BOX 610
NEWMAN LAKE, WA 99025
(509) 226-5050
www.inwprecast.com



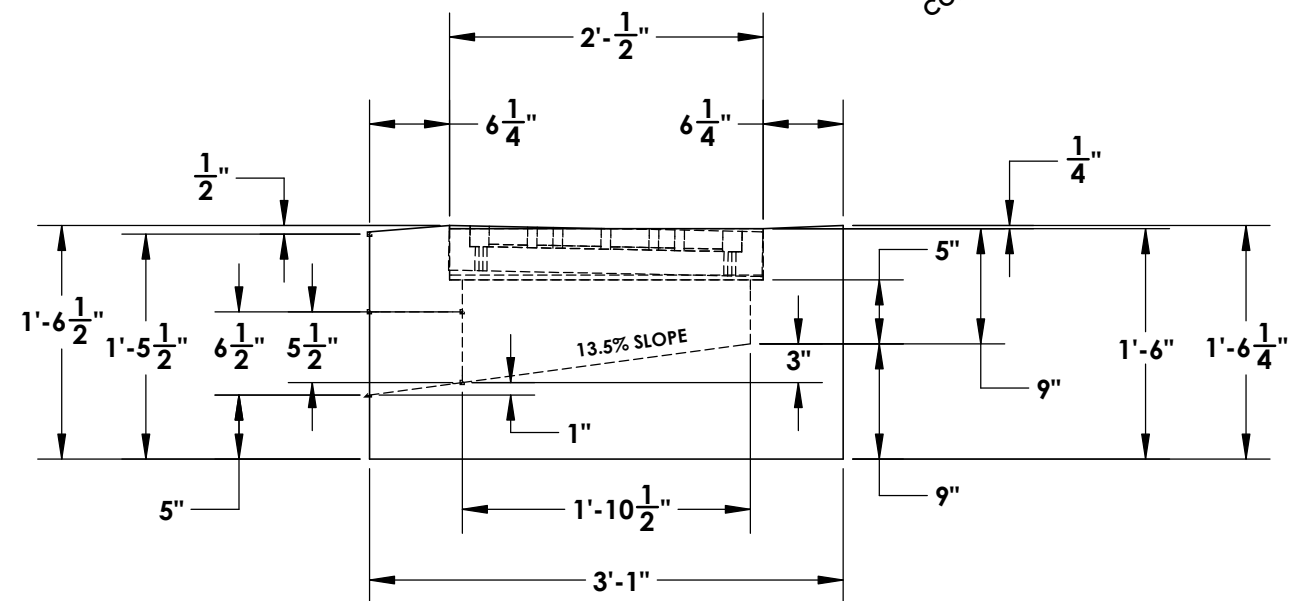
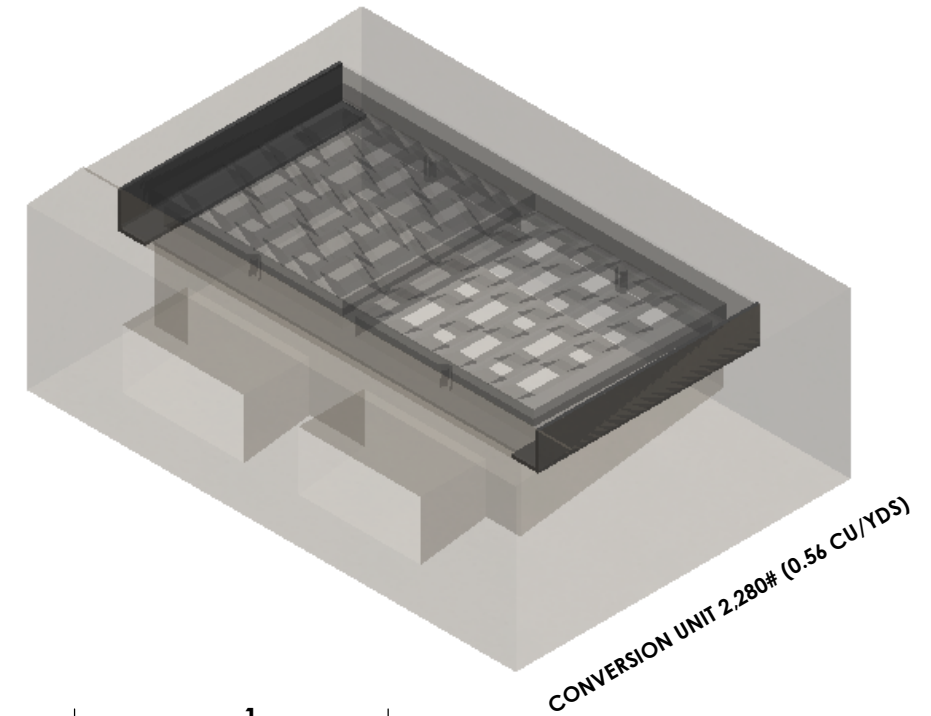
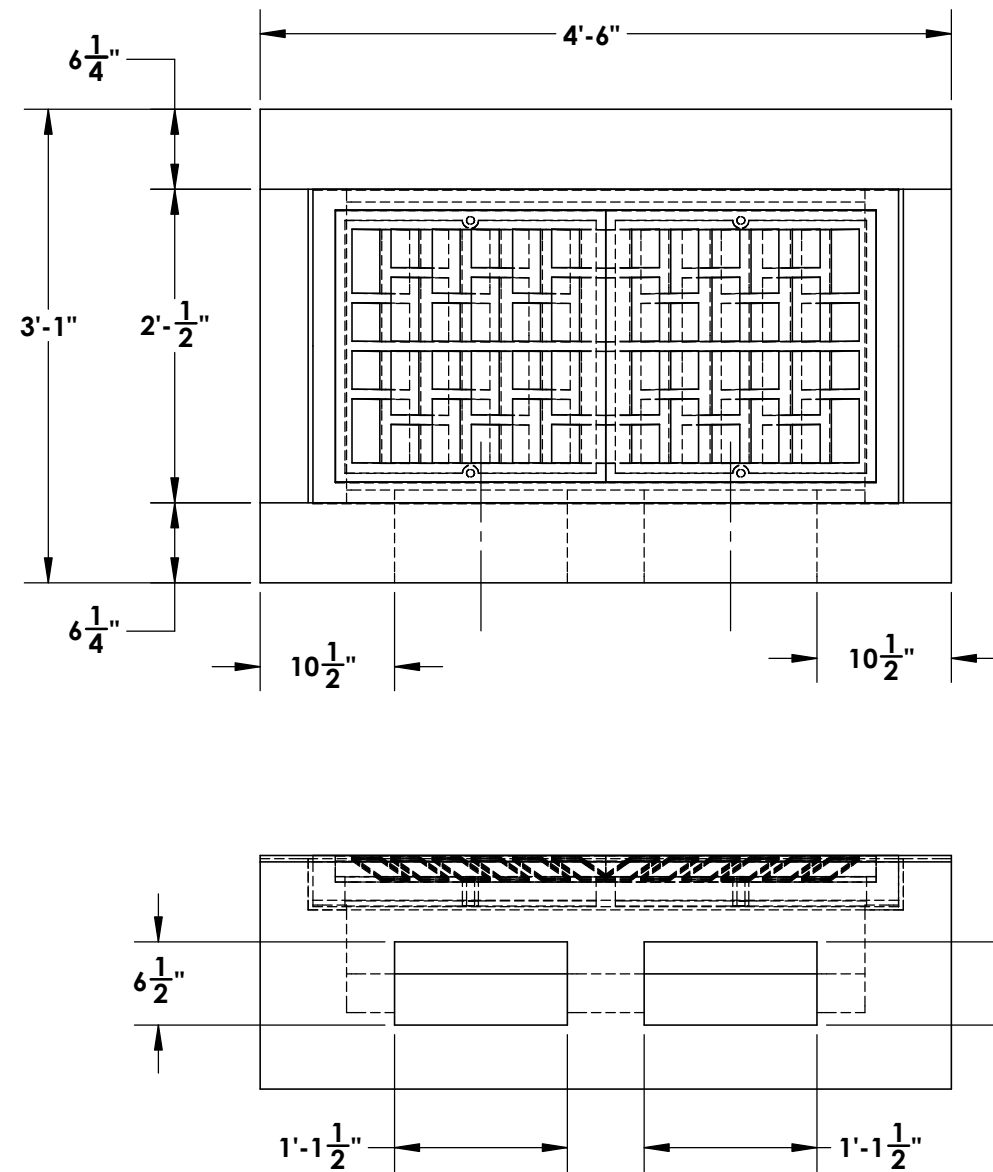
NOTES:

- ~ 5,000 MIN PSI
- ~ 3'-0" MIN CLEAR OPENING AT TOP OF SILL BLOCK
- ~ ROUND ADJUSTMENT RINGS AVAILABLE UPON REQUEST

STRUCTURE MEETS OR EXCEEDS CITY OF SPOKANE STANDARD B-101C AND IS CONSTRUCTED IN ACCORDANCE WITH ASTM C858 & AASHTO M199 PER WSDOT SPEC. 9-05.50(1)



TYPE 2 CATCH BASIN - CITY OF SPOKANE



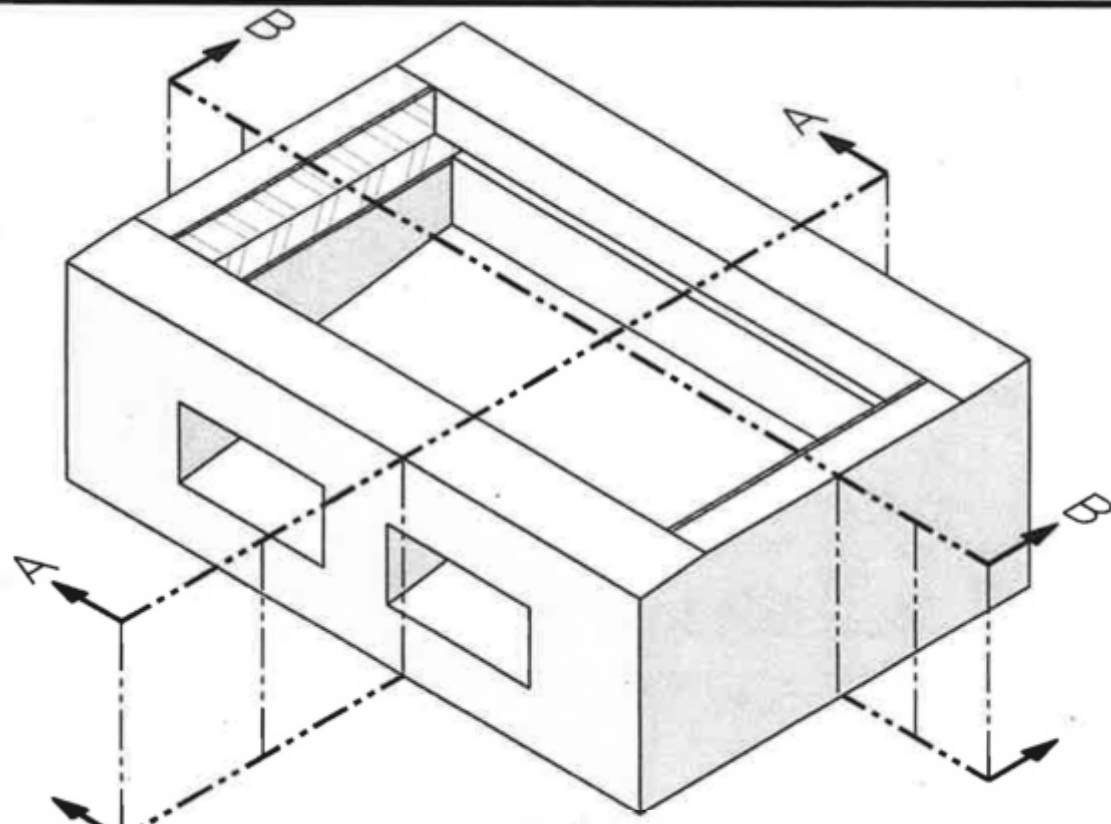
© INLAND NORTHWEST PRECAST



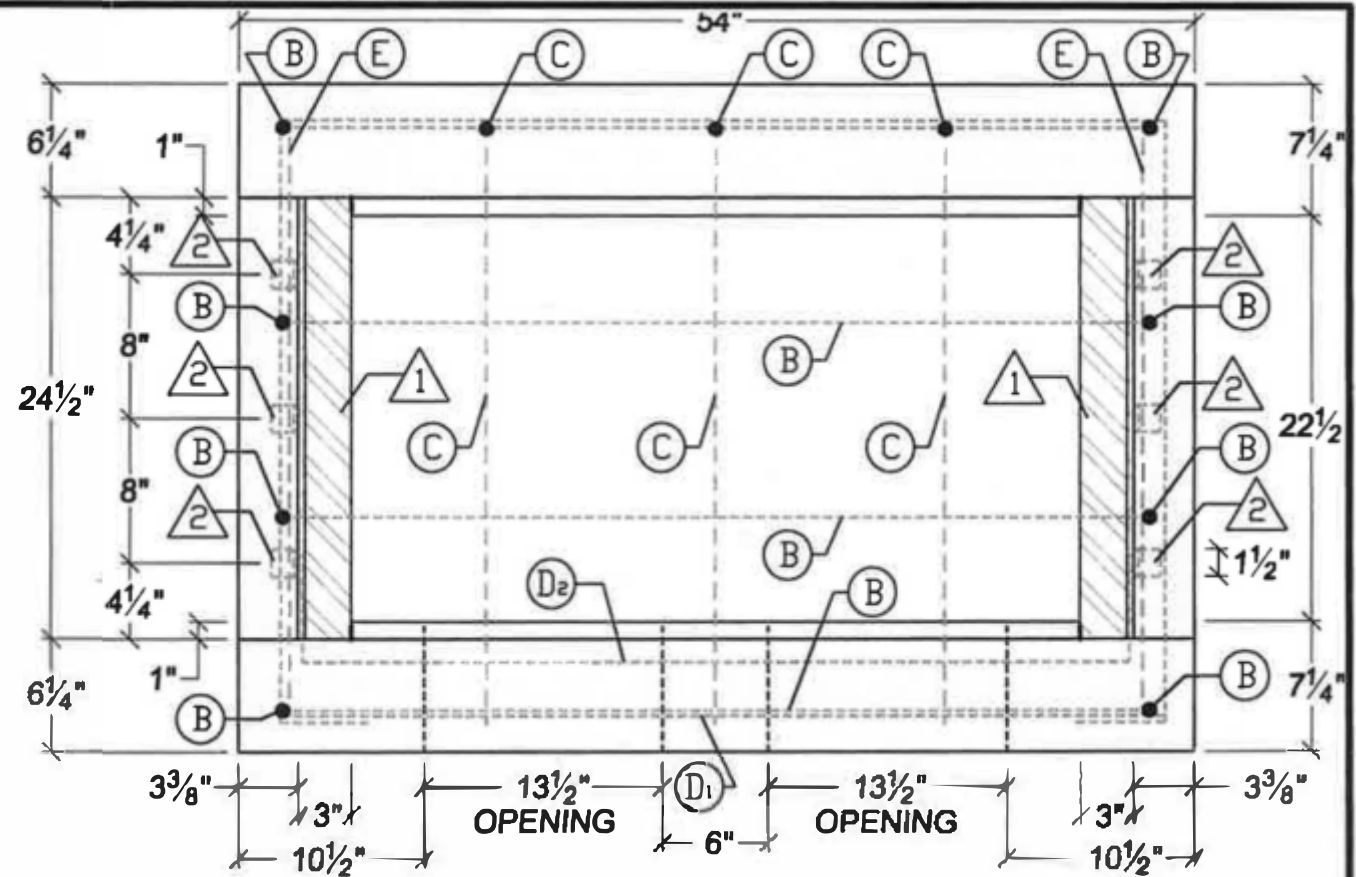
5204 NORTH STARR RD PO BOX 610
 NEWMAN LAKE, WA 99025
 (509) 226-5050
 www.inwprecast.com



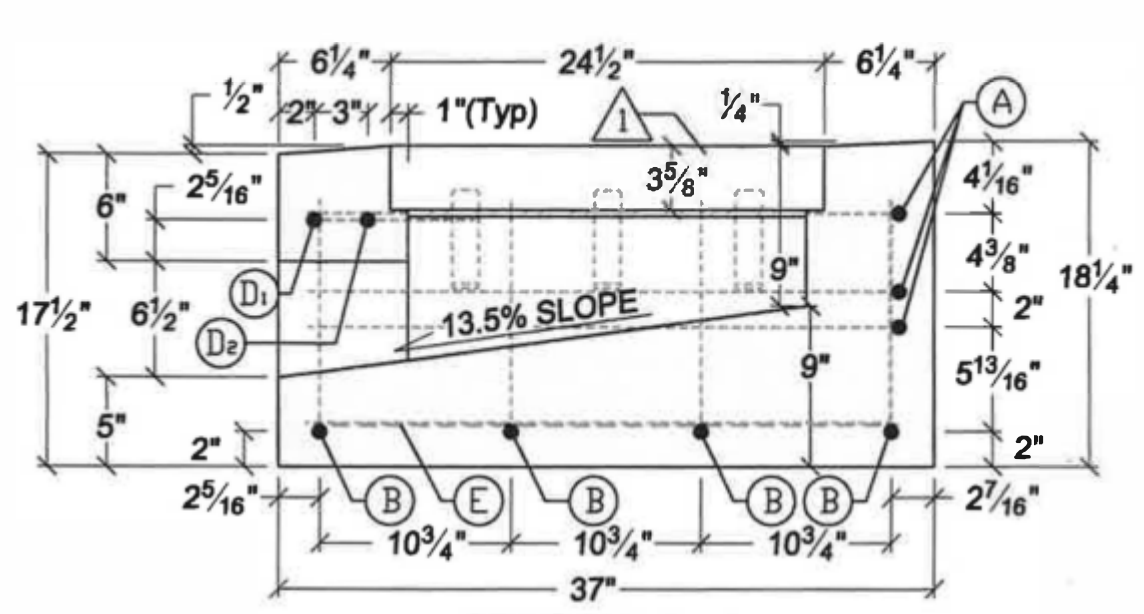
NOTES:
 ~ 5,000 MIN PSI
 ~ ROUND ADJUSTMENT RINGS
 AVAILABLE UPON REQUEST



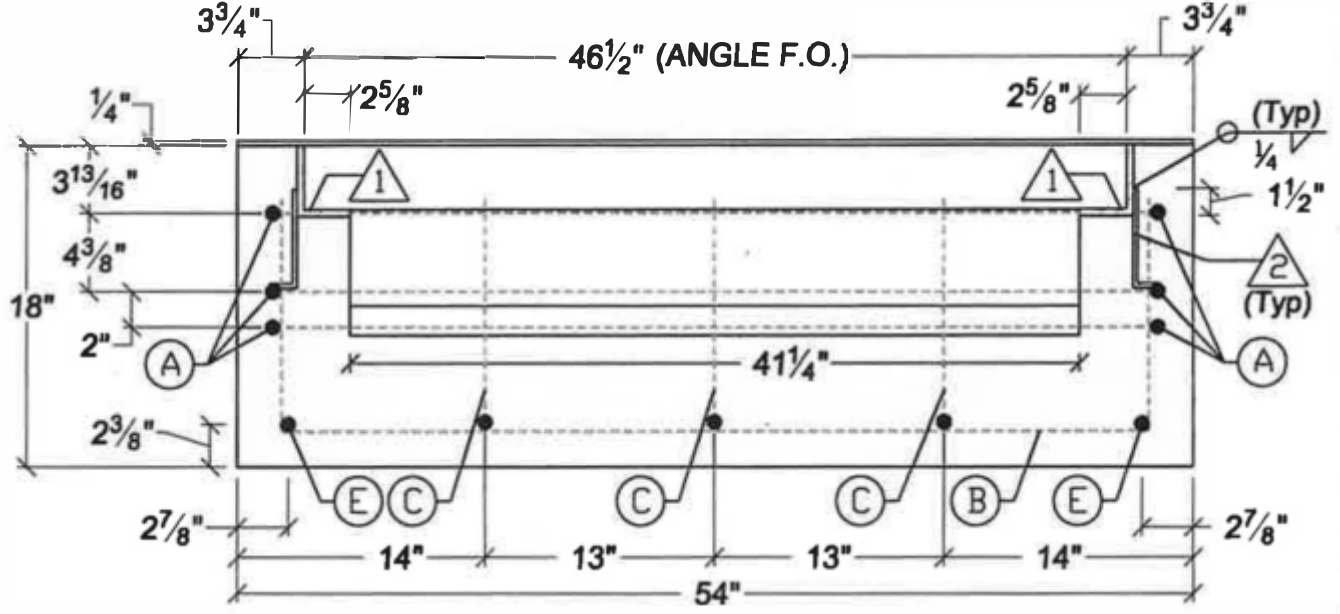
PART OVERVIEW



TOP VIEW



SECTION A-A



SECTION B-B

DETAIL NOTES:

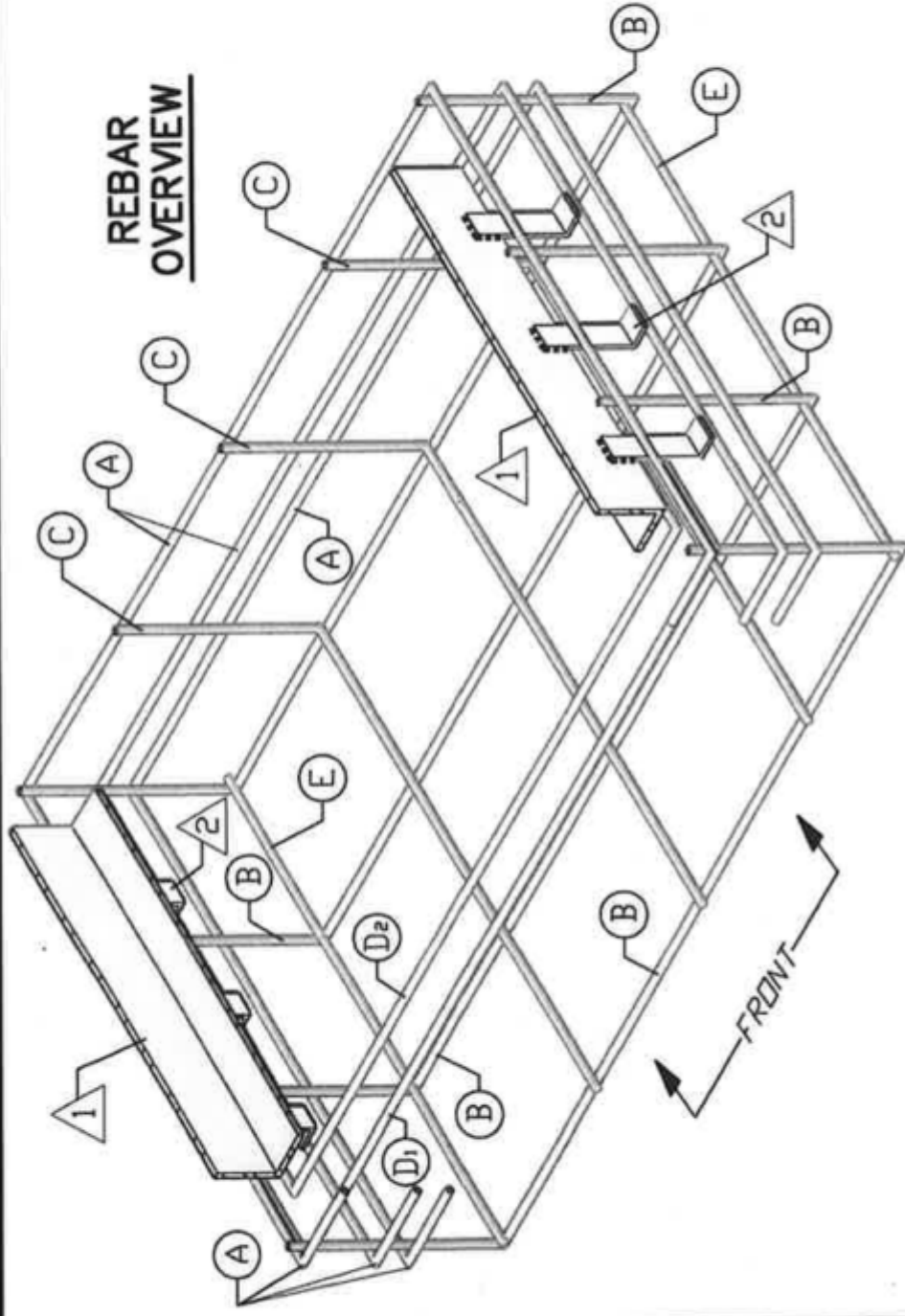
- ① 4"X3"X3/8" L=24 1/2" STEEL ANGLE (ONE BOTH ENDS)
- ② 5 1/2"X1 1/2"X1/4" L=1 1/2" STEEL ANGLES (3 BOTH ENDS)
- # SEE PLAN B-101D3 FOR REBAR IDENTIFICATION & BENDING

APPROVED BY

 DIRECTOR, ENGINEERING SERVICES P. MIKE TAYLOR, P.E.
 GARY S. NELSON
 PRINCIPAL ENGINEER, DESIGN GARY S. NELSON, P.E.

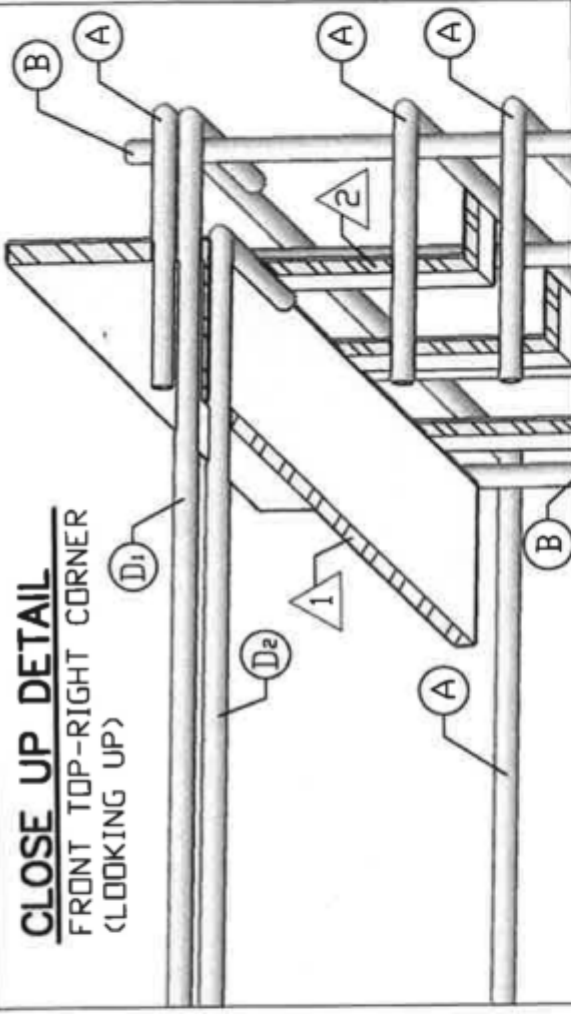
ADOPTED: 01/2009
 REVISED: 09/2010
 SUPERSEDES:
 CHECKED BY: JAG
 SCALE: NTS
 DWG/REV. BY: MBM

CONVERSION UNIT
 RETRO-FIT FOR CATCH BASIN TYPE 2
 ENGINEERING SERVICES
 CITY OF SPOKANE, WASHINGTON
 STANDARD PLAN No. B-101D2

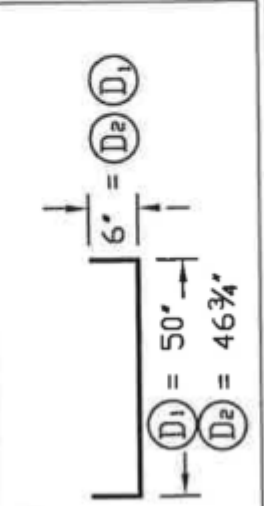
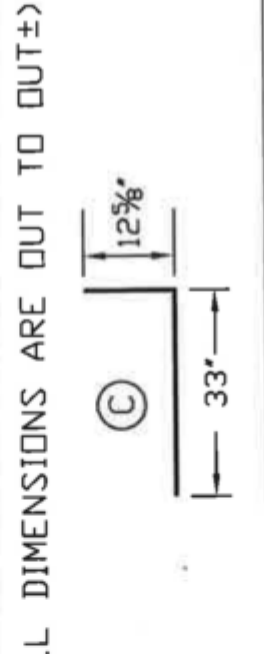
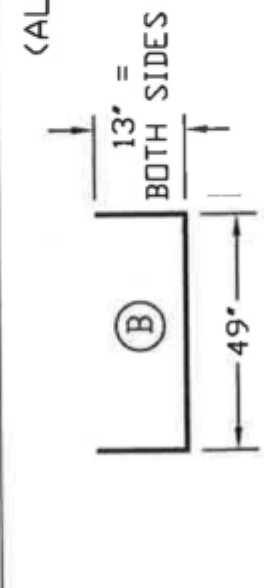
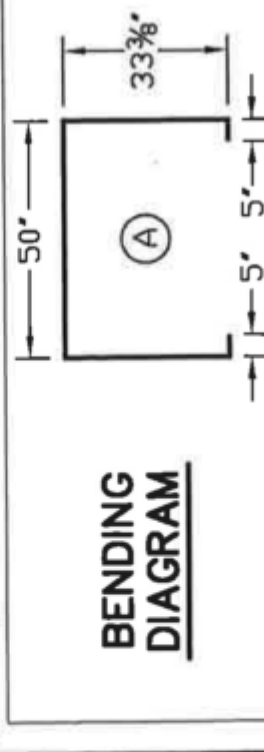


NOTES:

1. ANGLE 1 SHALL BE SET SO THAT THE PREFABRICATED FRAME SHALL HAVE FULL BEARING ON BOTH ENDS. THE FINISHED TOP OF CONCRETE SHALL BE EVEN WITH THE TOP OF STEEL ANGLE.
2. THE CONVERSION UNIT WITH FRAME & GRATE SHALL BE PLACED TO MATCH THE GUTTER SLOPE TO PROVIDE AN UNOBSTRUCTED FLOW LINE.
3. ALL EXPOSED CONCRETE EDGES SHALL BE FINISHED WITH A 1/2" RADIUS EDGER TOOL.
4. CONSTRUCT CONCRETE LEDGE FOR GRATE FRAME AROUND ALL FOUR SIDES. THE LONG CONCRETE LEDGES ARE RAISED 3/8" ABOVE THE SHORT LEDGES SINCE THEY RECEIVE NO 3/8" ANGLE.
5. ALL PICKUP HOLES SHALL BE GROUTED FULL AFTER THE BASIN HAS BEEN PLACED.
6. SEE CONTRACT FOR TYPE OF GRATE SPECIFIED. SEE WSDOT STANDARD PLAN B-40.40-00 FOR FRAME & GRATE DETAILS.
7. ALL REBAR SHALL HAVE A MINIMUM OF 2" COVERAGE ON ALL SIDES.



MARK	REBAR LOCATION	QTY.	SIZE	LENGTH	DESCRIPTION
A	SIDEWALL	3		10'-6 3/4"±	HORIZ.
B	BOTTOM SLAB AND SIDEWALL	4		6'-3"±	VERTICAL ON SIDEWALLS
C	BOTTOM SLAB AND SIDEWALL	3	3	3'-10"±	HORIZ.
D1	SIDE WALL OVER OPENING	1		5'-2"±	
D2		1		4'-10 3/4"±	
E	BOTTOM SLAB @ EACH END	2		2'-9"±	STRAIGHT



(ALL DIMENSIONS ARE OUT TO OUT±)

DETAIL NOTES:

1. 4" x 3" x 3/8" L=24 1/2" STEEL ANGLE (ONE BOTH ENDS)
2. 5 1/2" x 1 1/2" x 1/4" L=1 1/2" STEEL ANGLES (3 BOTH ENDS)

APPROVED BY

[Signature]
 DIRECTOR, ENGINEERING SERVICES P. MIKE TAYLOR, P.E.
 PRINCIPAL ENGINEER, DESIGN GARY S. NELSON, P.E.

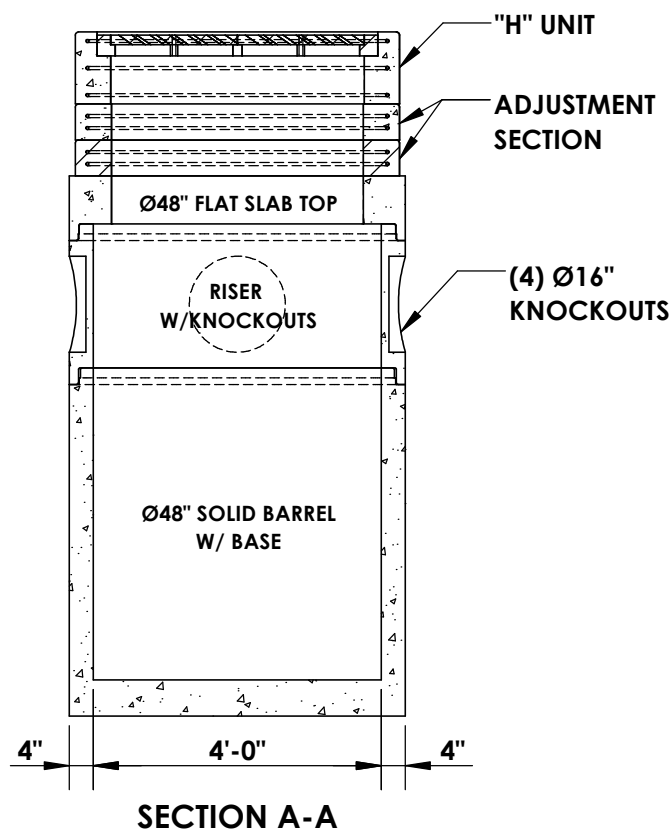
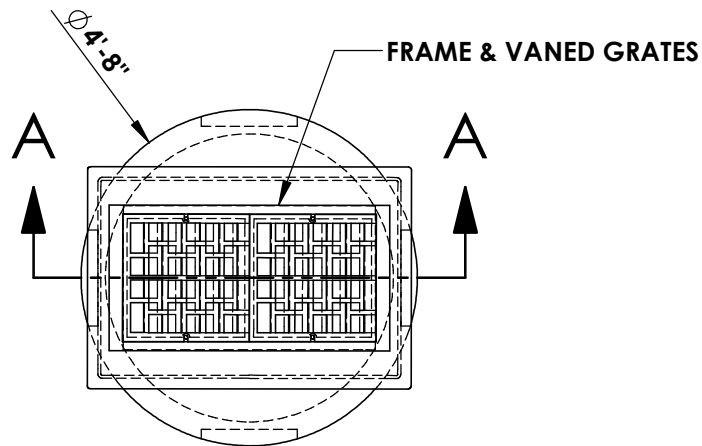
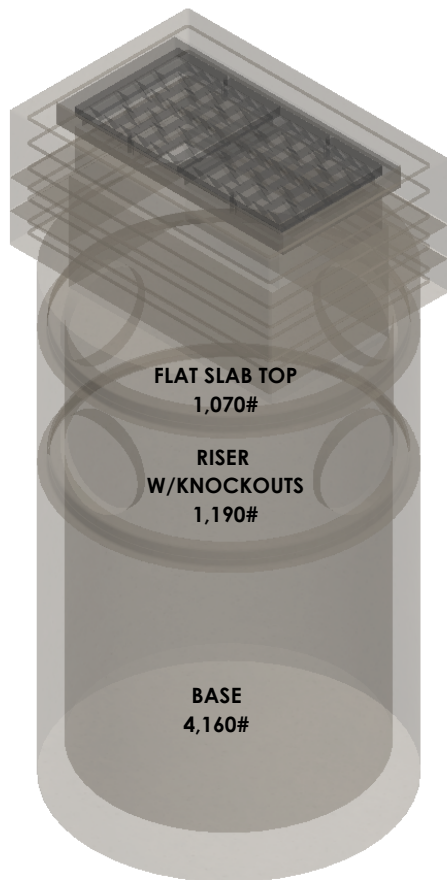
ADOPTED: 01/2009
 REVISED: 09/2010
 SUPERSEDES: JAG
 CHECKED BY: NTS
 SCALE: NTS
 DWG/REV. BY: MBM

CONVERSION UNIT NOTES
 INCLUDING BAR LIST & BENDING DIAGRAM

ENGINEERING SERVICES
 CITY OF SPOKANE, WASHINGTON
 STANDARD PLAN No. B-101D3



CITY OF SPOKANE TYPE 4 CATCH BASIN



***CONCRETE:**
4,000 PSI MIN.

***ROUND ADJUSTMENT RINGS:**
AVAILABLE UPON REQUEST

***CAST-IRON**
AVAILABLE UPON REQUEST

~ STRUCTURE MEETS OR EXCEEDS CITY OF SPOKANE STANDARD B-101C AND IS CONSTRUCTED IN ACCORDANCE WITH WITH ASTM C858 & AASHTO M199 PER WSDOT SPEC. 9-05.50(1)

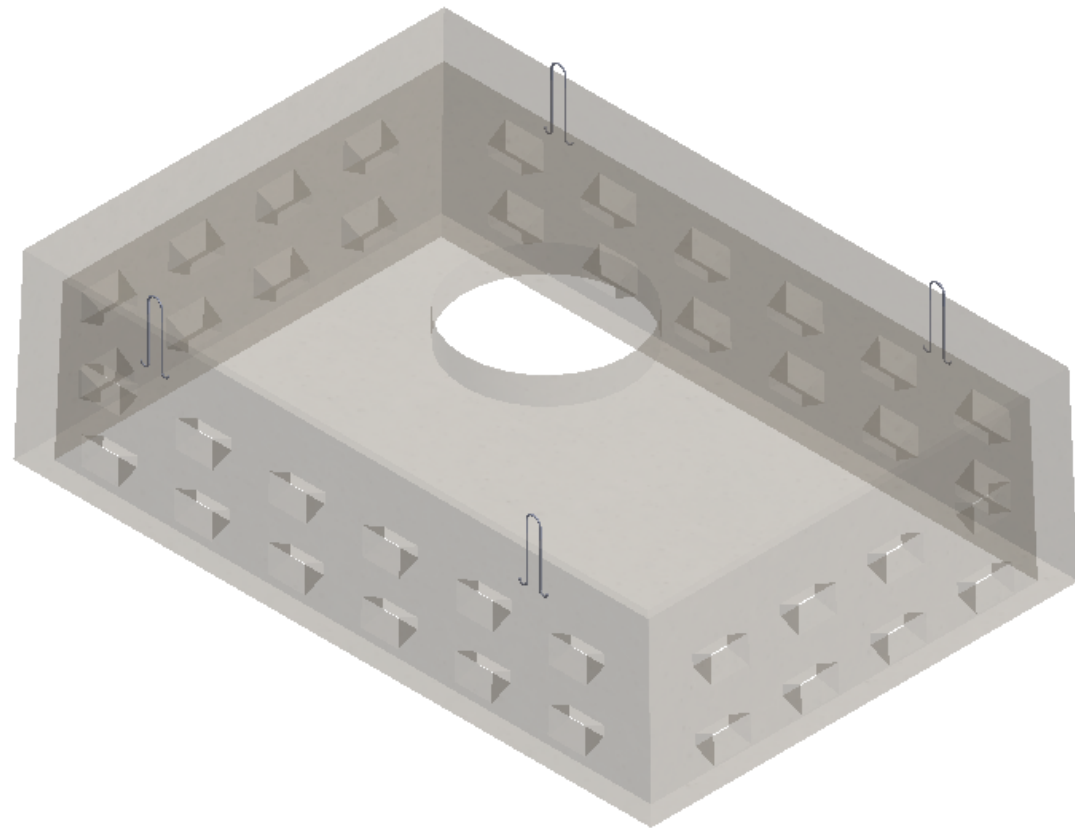


5204 NORTH STARR RD PO BOX 610
NEWMAN LAKE, WA 99025
(509) 226-5050
www.inwprecast.com

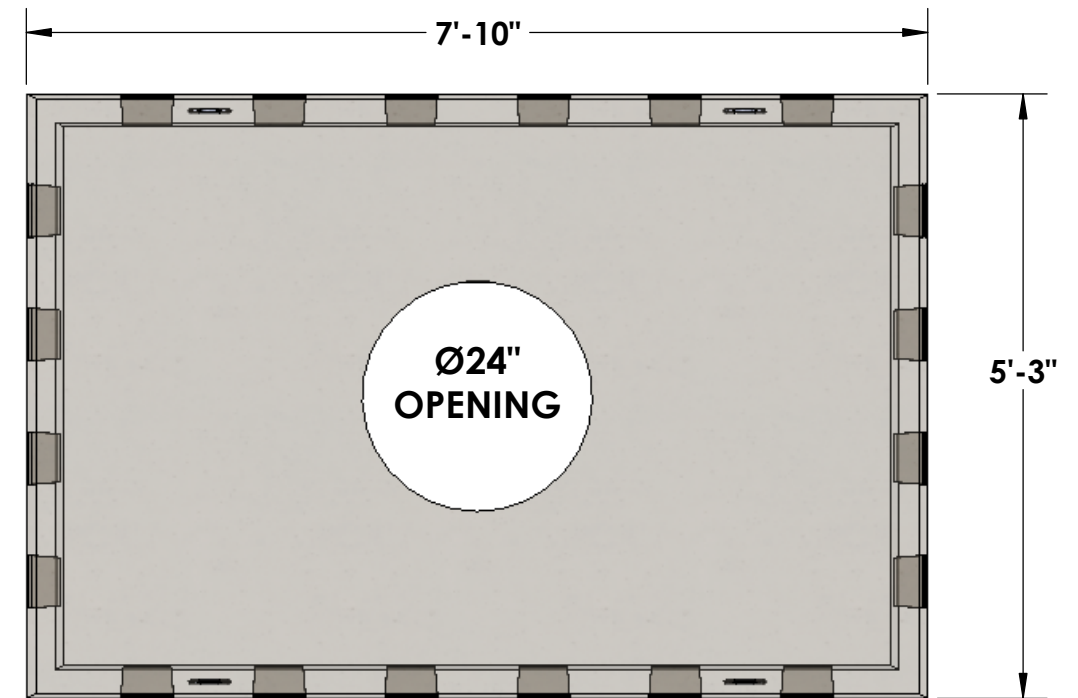




500 GALLON LOW PROFILE DRYWELL



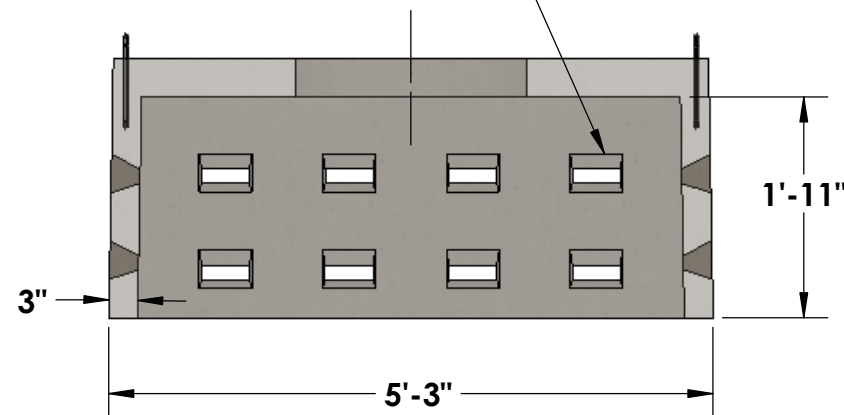
WEIGHT: 3,680#
CUBIC YARDS: 0.91



CONCRETE:
5,000 PSI MIN

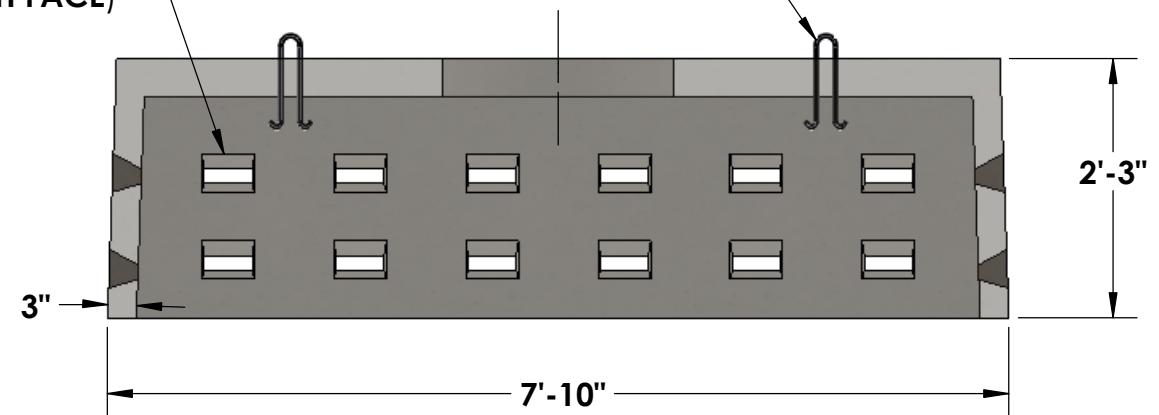
REINFORCEMENT:
~ #4 BAR @ 12\"/>

(8) 1"x5\"/>



(12) 1"x5\"/>

(4) LIFTERS



© INLAND NORTHWEST PRECAST



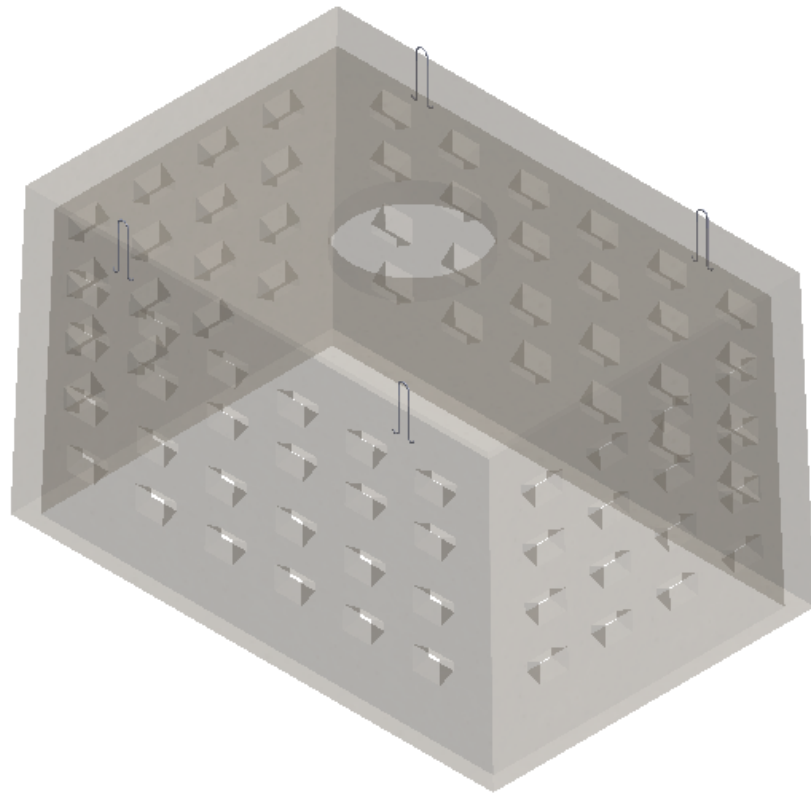
5204 N STARR RD PO BOX 610
NEWMAN LAKE, WA 99025
(509) 226-5050
www.inwprecast.com



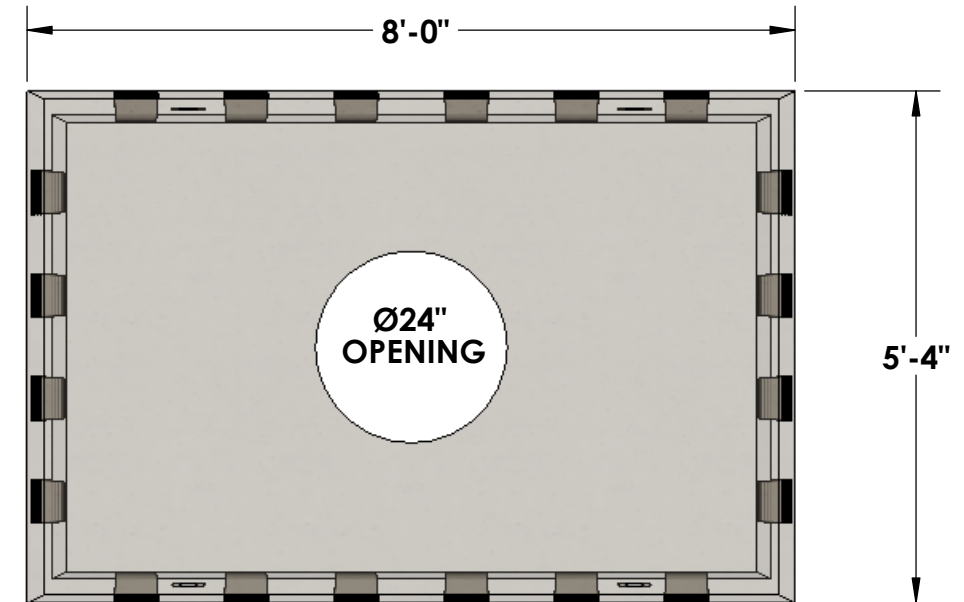
DRYWELLS ARE CONSTRUCTED IN ACCORDANCE WITH THE REQUIREMENTS OF ASTM C478, AASHTO M-199, & ASTM C443



1200 GALLON LOW PROFILE DRYWELL

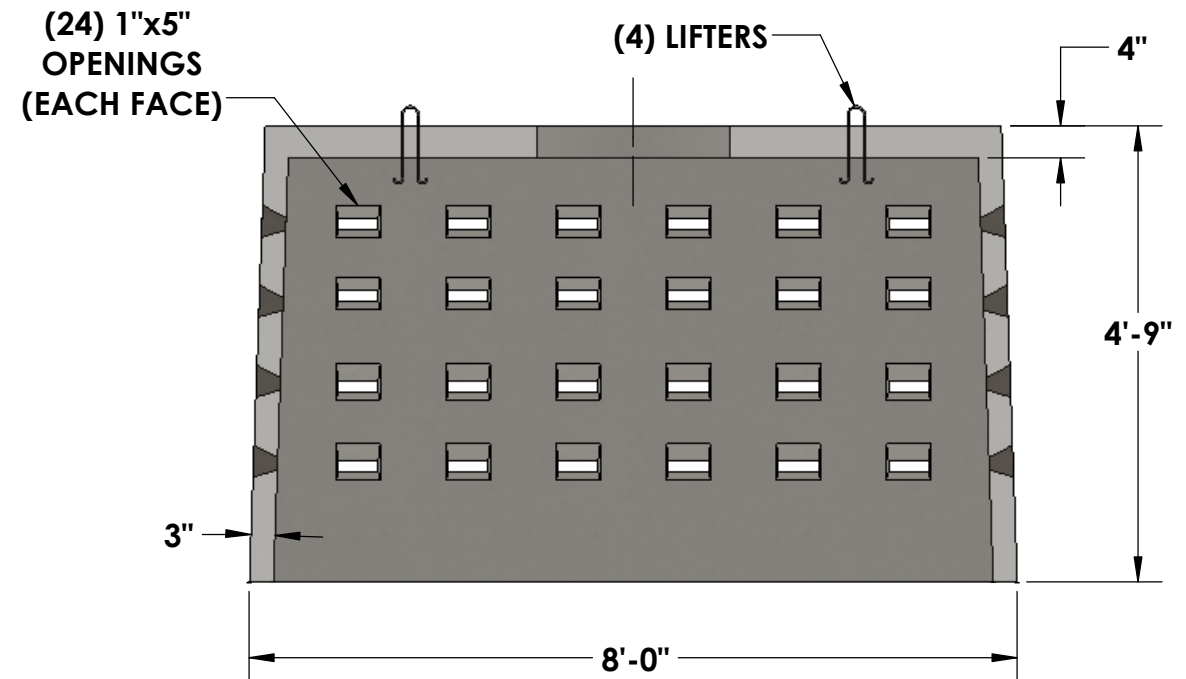
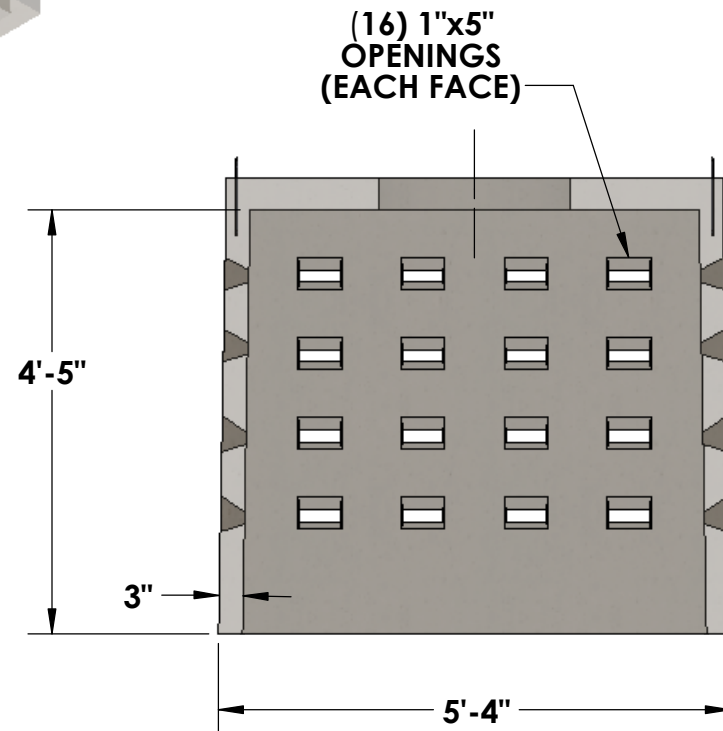


WEIGHT: 5,900#
CUBIC YARDS: 1.46



CONCRETE:
~ 5,000 PSI MIN

REINFORCEMENT:
~ #4 BAR @ 12" O.C.E.W.



© INLAND NORTHWEST PRECAST



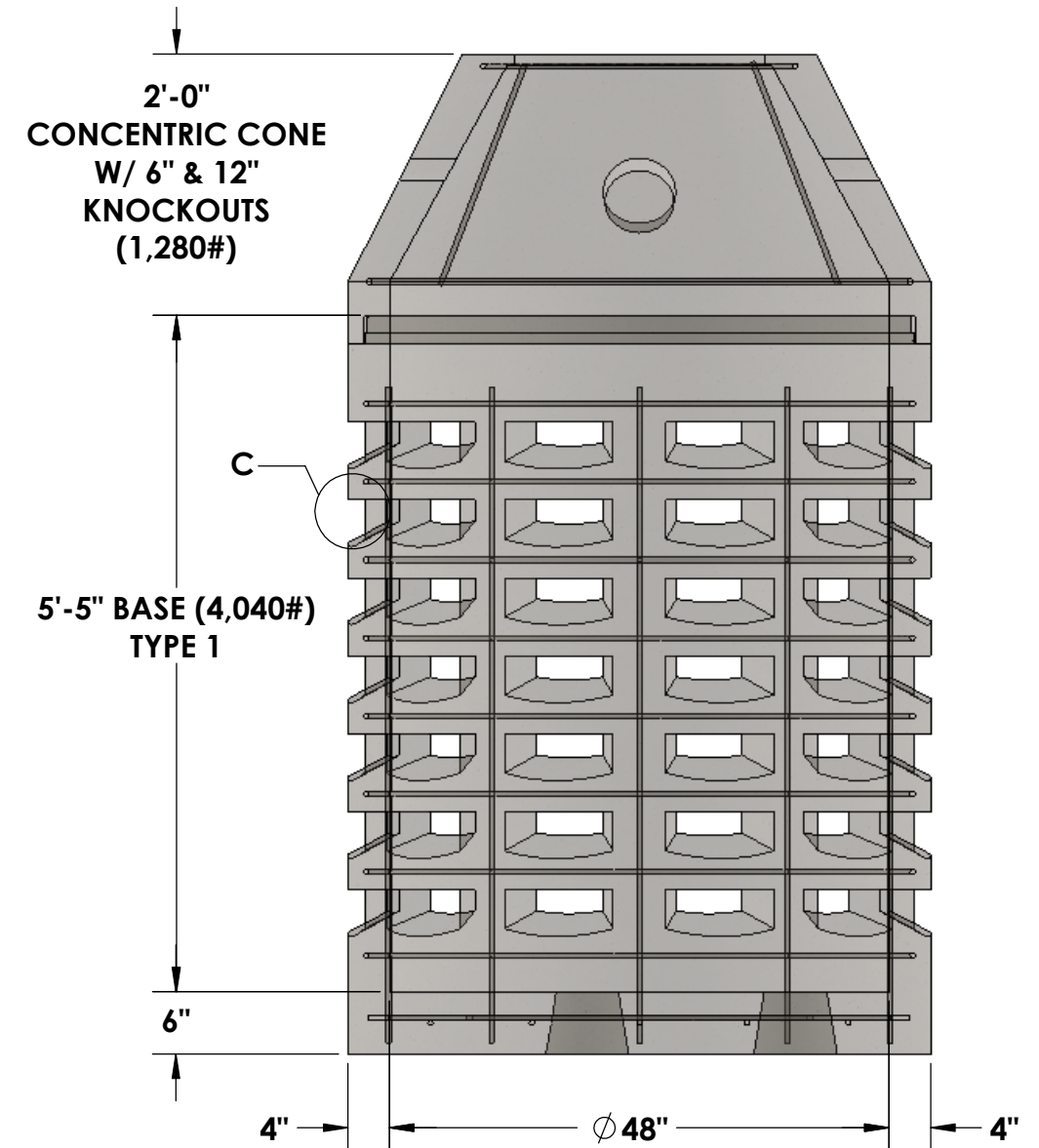
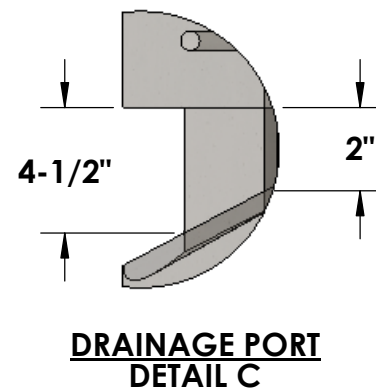
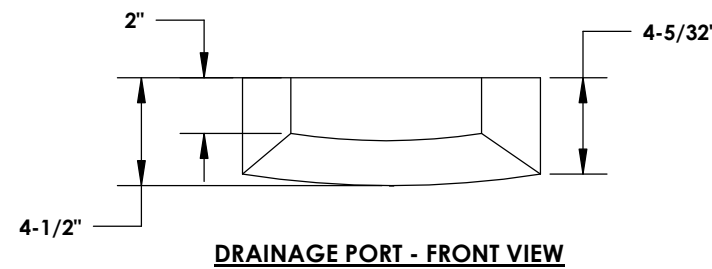
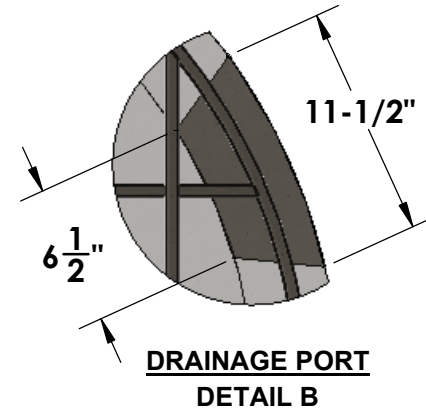
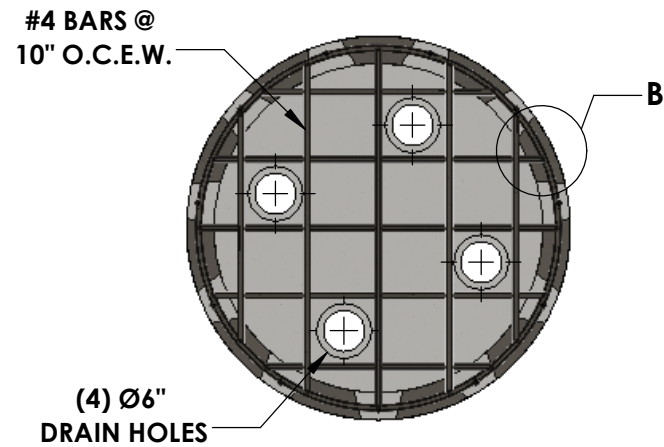
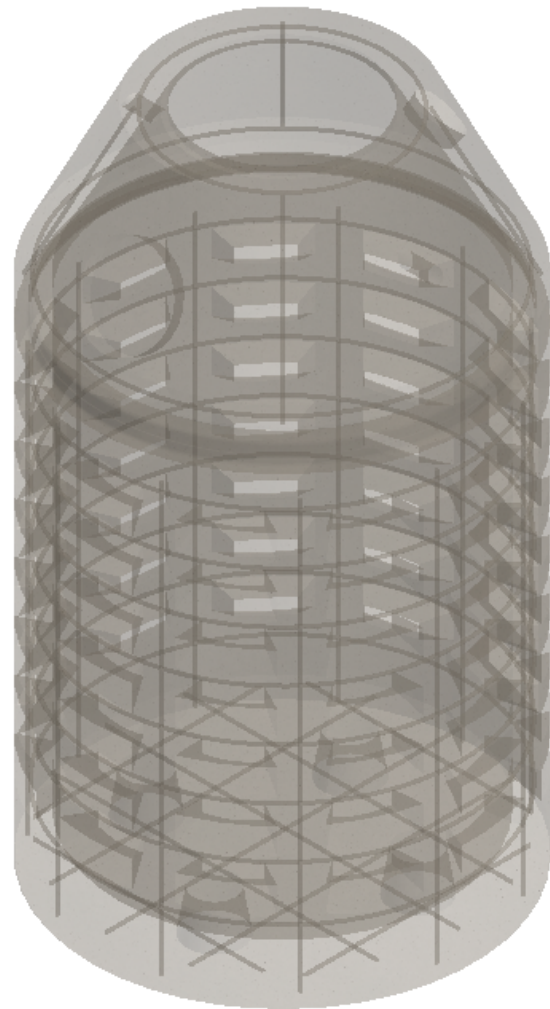
5204 N STARR RD PO BOX 610
NEWMAN LAKE, WA 99025
(509) 226-5050
www.inwprecast.com



DRYWELLS ARE CONSTRUCTED IN ACCORDANCE WITH THE REQUIREMENTS OF ASTM C478, AASHTO M-199, & ASTM C443



Ø48" TYPE 1 DRYWELL



CONCRETE:
4,000 PSI MIN. @ 28 DAYS

ROUND ADJUSTMENT RINGS:
AVAILABLE UPON REQUEST

CAST-IRON:
AVAILABLE UPON REQUEST

© INLAND NORTHWEST PRECAST



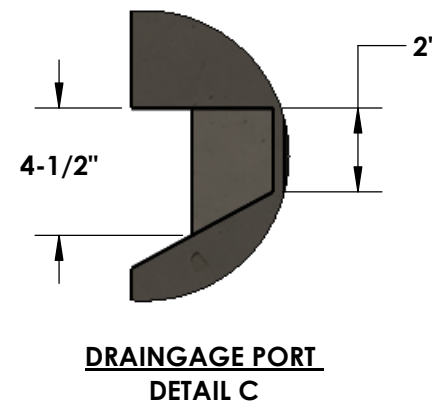
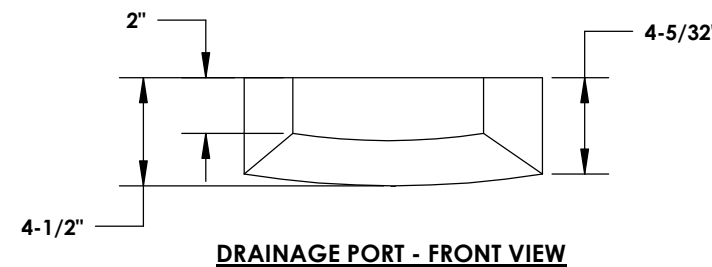
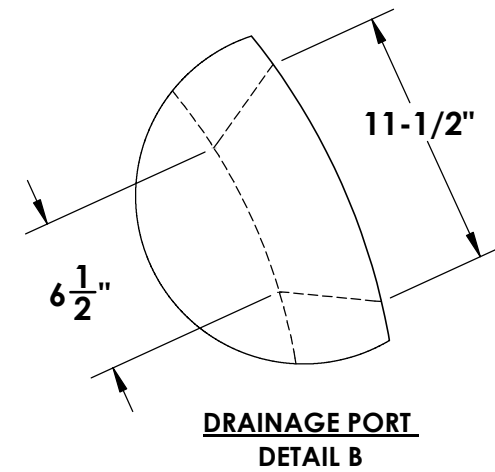
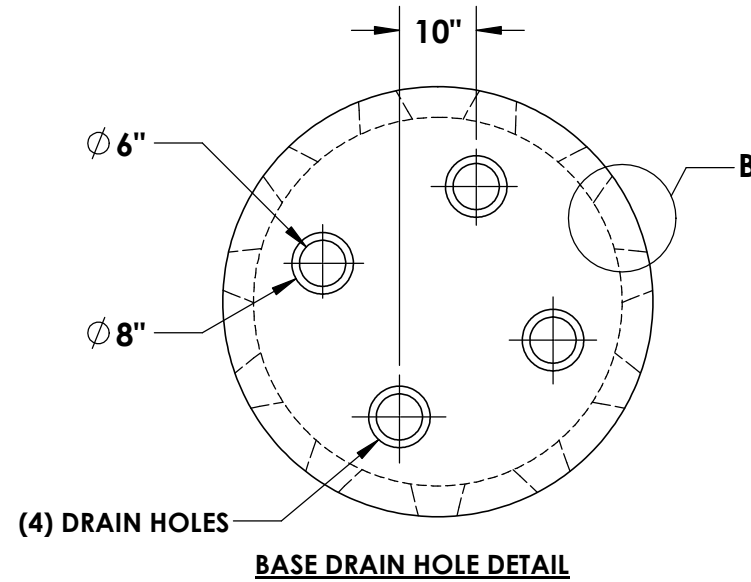
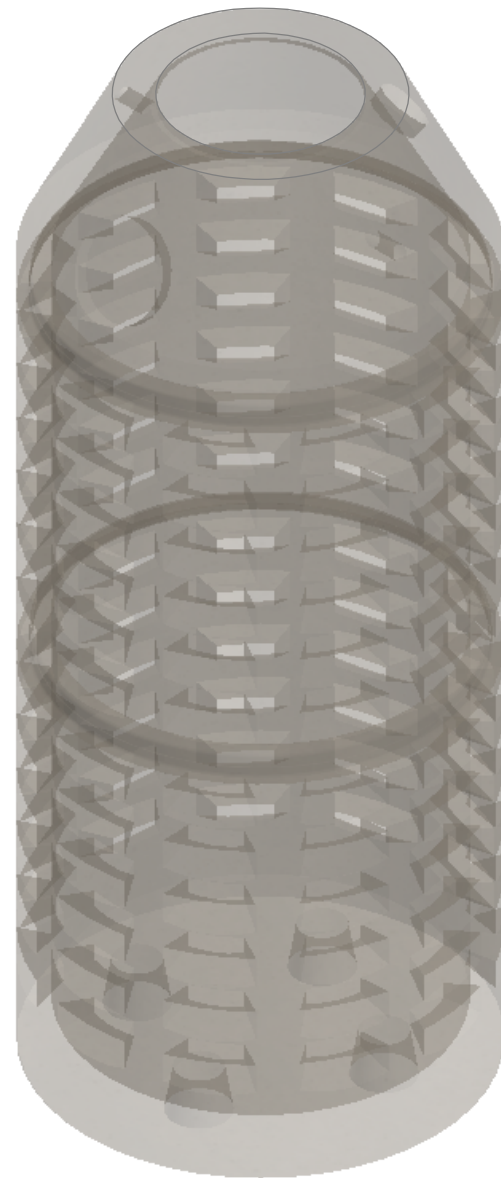
5204 NORTH STARR RD PO BOX 610
NEWMAN LAKE, WA 99025
(509) 226-5050
www.inwprecast.com



DRYWELLS MEET OR EXCEED WSDOT STANDARD B-20.20 AND MEETS OR EXCEEDS CITY OF SPOAKNE STANDARD B-102C & IS CONSTRUCTED IN ACCORDANCE WITH THE REQUIREMENTS OF ASTM C478, AASHTO M-199, & ASTM C443



Ø48" TYPE 2 DRYWELL

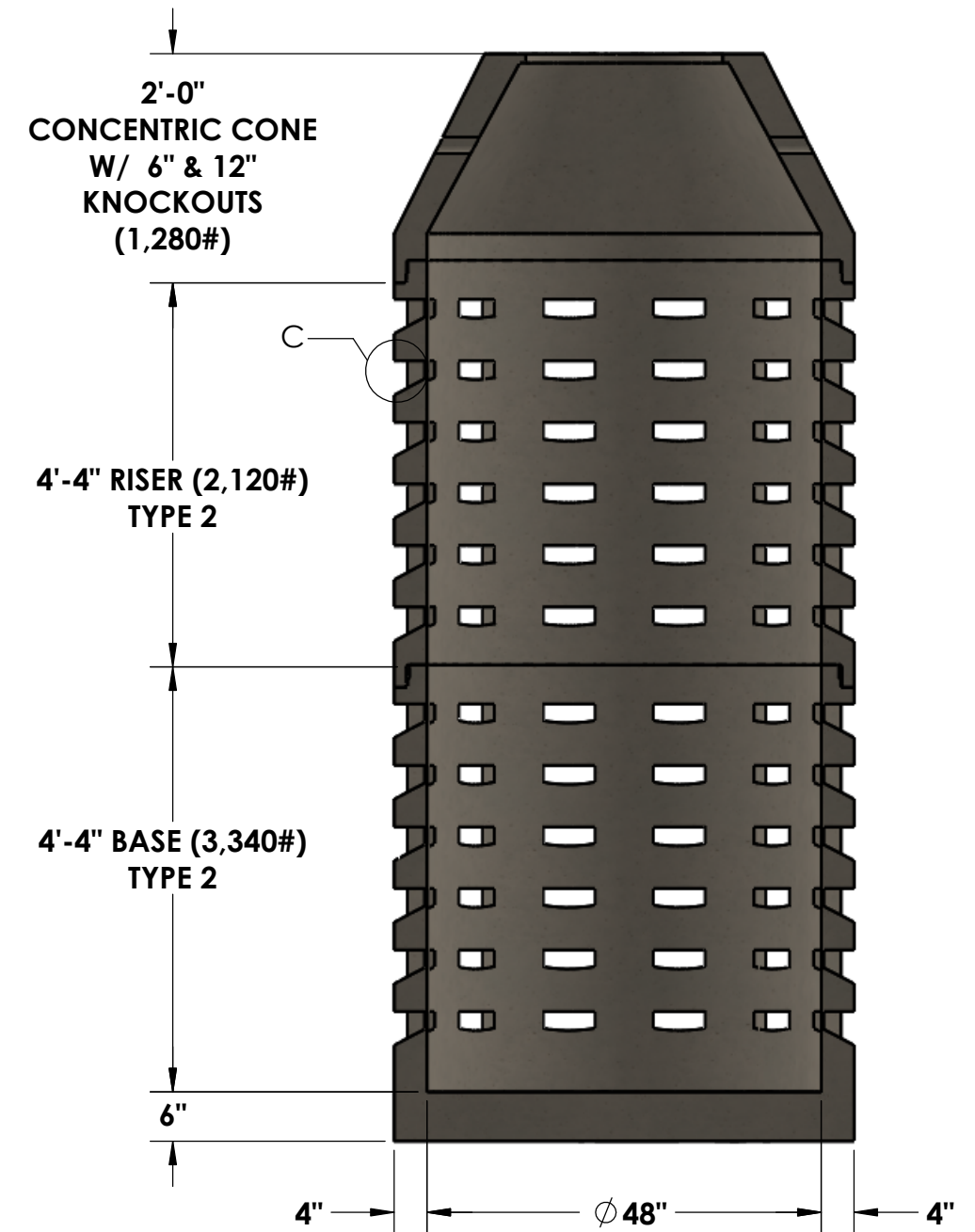


CONCRETE:
4,000 PSI MIN. @ 28 DAYS

ROUND ADJUSTMENT RINGS:
AVAILABLE UPON REQUEST

CAST-IRON:
AVAILABLE UPON REQUEST

REINFORCEMENT:
#4 GRADE 60 REBAR @ 10"
EACH WAY



© INLAND NORTHWEST PRECAST

5204 NORTH STARR RD PO BOX 610
NEWMAN LAKE, WA 99025
(509) 226-5050
www.inwprecast.com



DRYWELLS MEET OR EXCEED WSDOT STANDARD B-20.20 AND MEETS OR EXCEEDS CITY OF SPOKANE STANDARD B-102D & IS CONSTRUCTED IN ACCORDANCE WITH THE REQUIREMENTS OF ASTM C478, AASHTO M-199, & ASTM C443