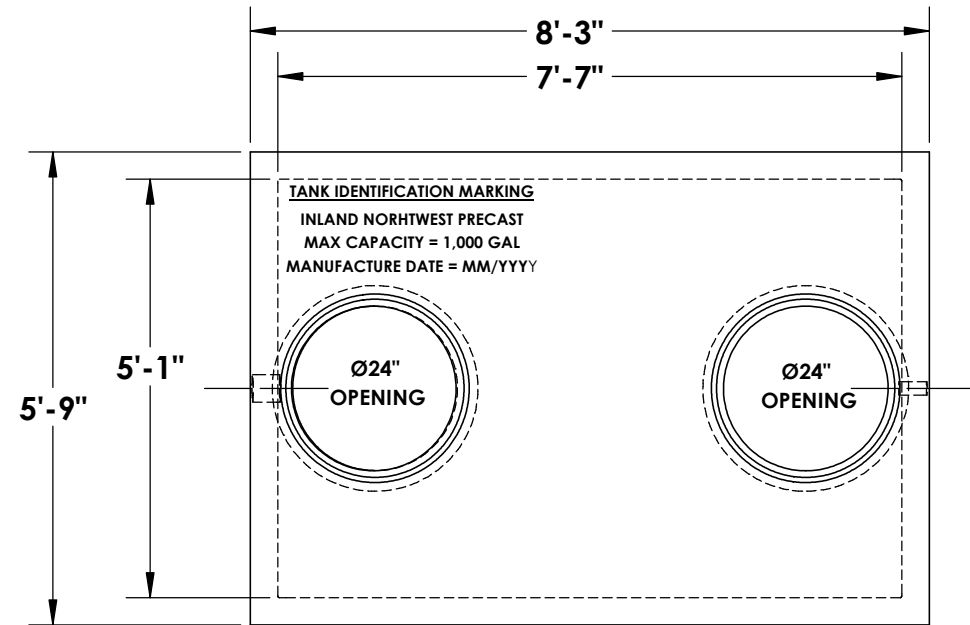


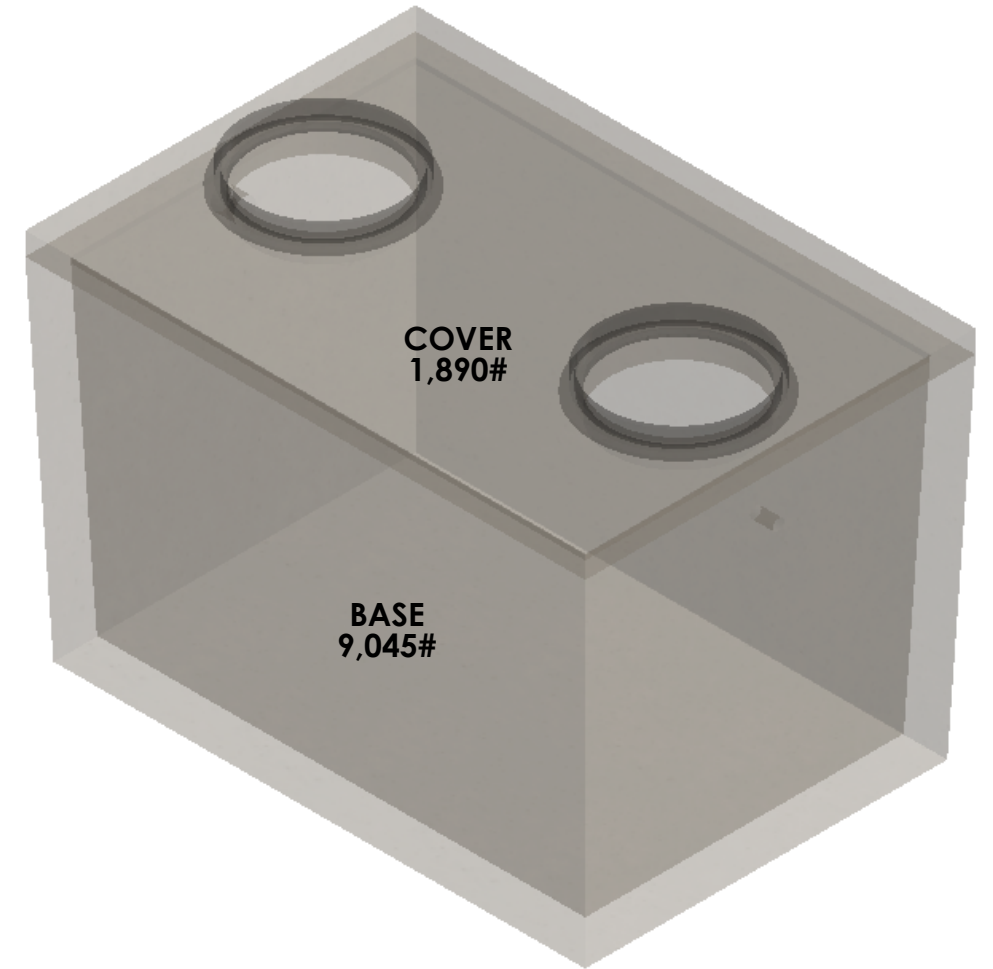


1000 GALLON SINGLE COMPARTMENT PUMP TANK W/ FLANGE ADAPTER

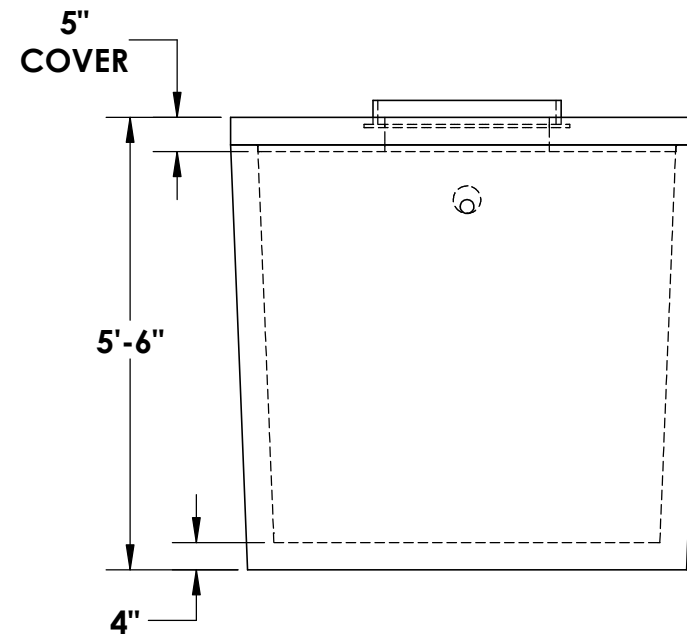
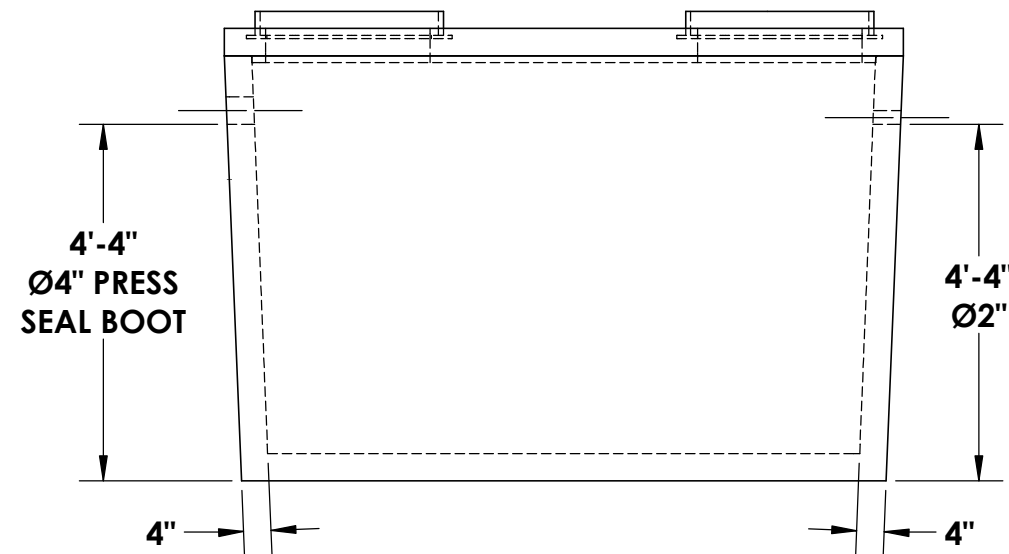


* **CONCRETE:**
4,000 PSI MINIMUM

* **RISER/FLANGE ADAPTERS:**
AVAILABLE UPON REQUEST



- NOTES:**
- ~ BEDDING MUST BE COMPACTED AND AREA AROUND TANK MUST BE BACKFILLED PRIOR TO PUTTING INTO SERVICE
 - ~ Ø4" PRESS SEAL BOOTS PROVIDED AT INLET
 - ~ STRUCTURAL ENGINEERING CALCULATIONS AVAILABLE UPON REQUEST
 - ~ 2-1/2" TAPER FROM TOP TO BOTTOM OF TANK



5204 NORTH STARR RD PO BOX 610
NEWMAN LAKE, WA 99025
(509) 226-5050
www.inwprecast.com



REINFORCEMENT

COVER:

- ~ TRANSVERSE #4 @ 6"
- ~ LONGITUDINAL #4 @ 1'-0"

BASE WALLS:

- ~ 4x4W4xW4 WIRE MESH IN WALLS

BASE FLOOR:

- ~ TRANSVERSE #4 @ 9"
- ~ LOGITUDINAL #4 @ 1'-0"

***ALL TANKS ARE MADE IN ACCORDANCE WITH ASTM C1227 - 13 (STANDARD SPECIFICATION FOR PRECAST CONCRETE SEPTIC TANKS)**