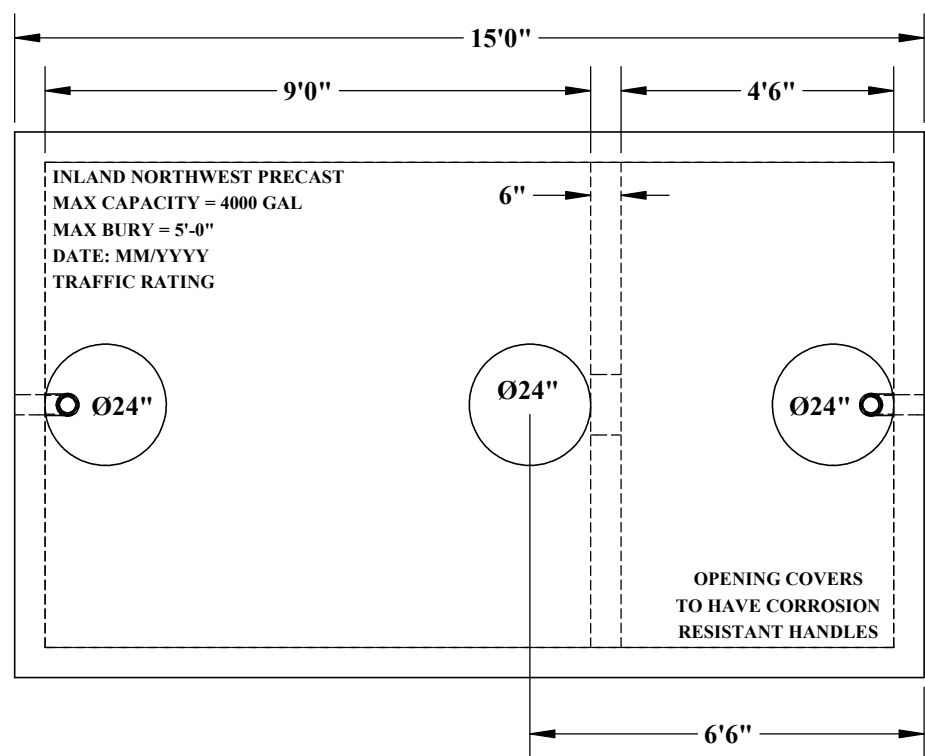




# 4,000 GALLON DOUBLE COMPARTMENT TANK

\*CONCRETE  
5,000 PSI MIN.

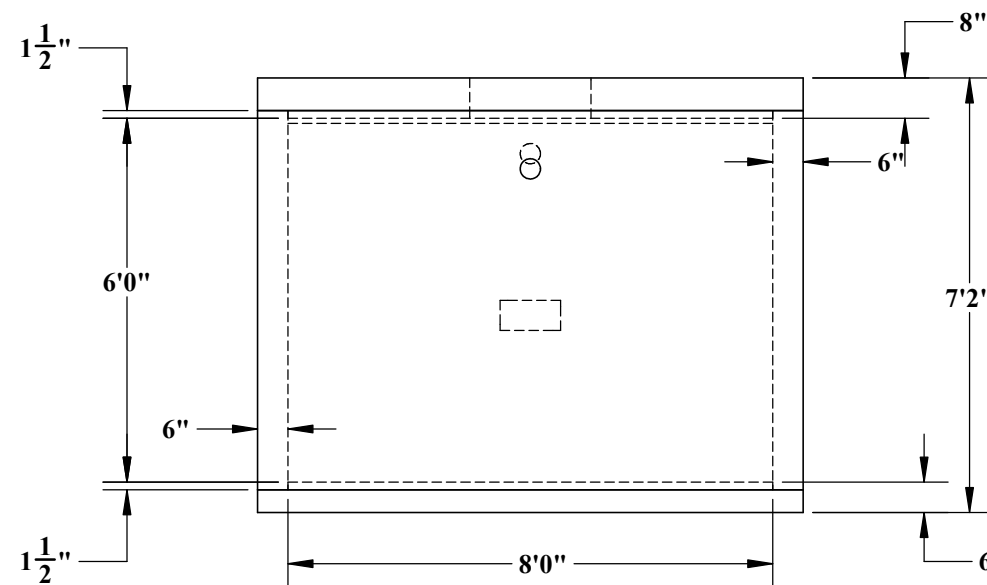
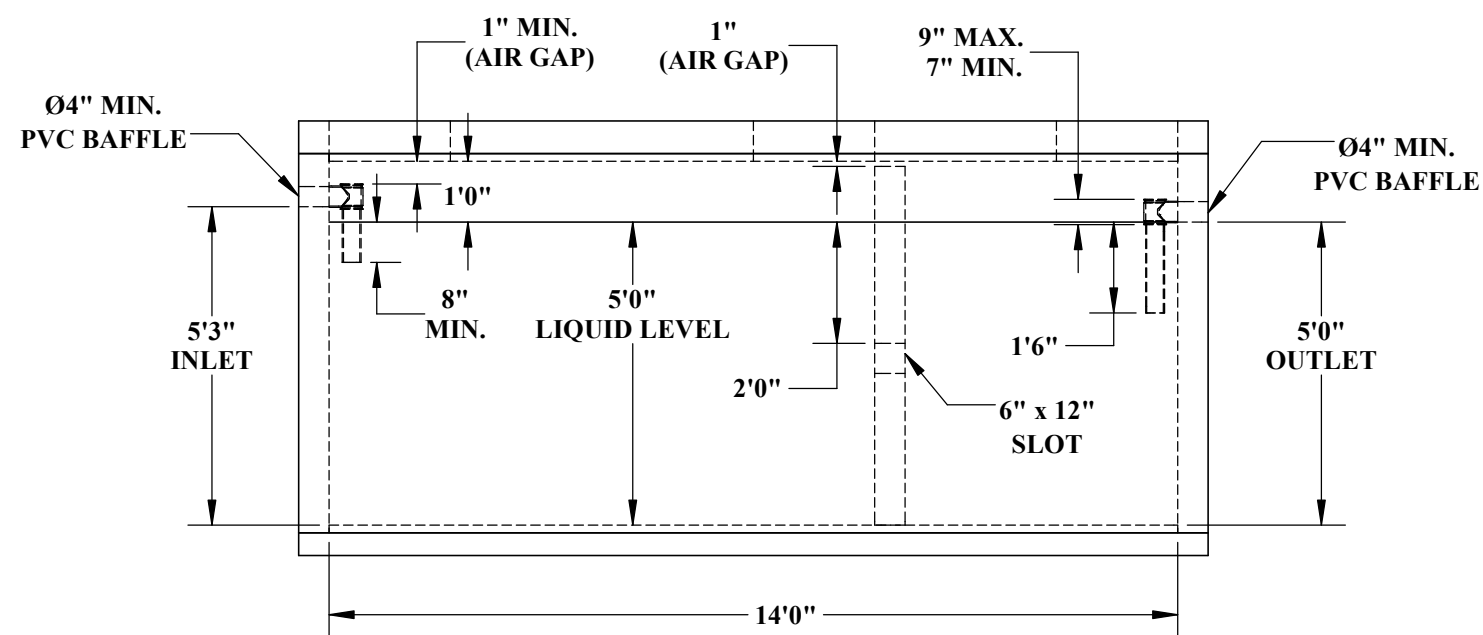
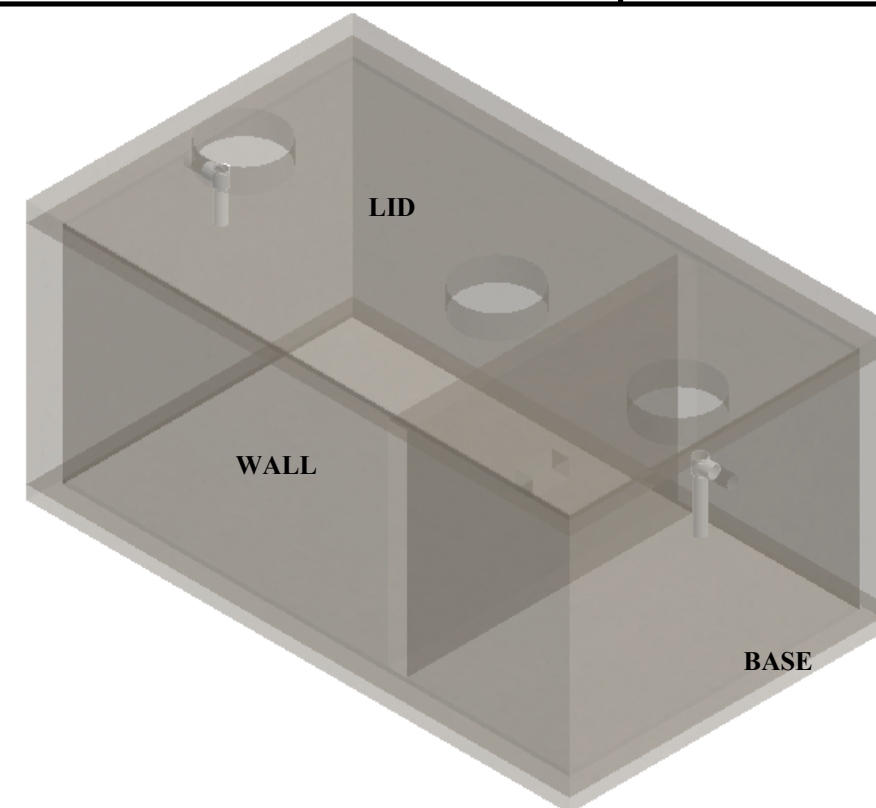


## WEIGHTS:

~ LID - 12,125# (2.99 CU/YDS)

~ WALL - 25,075# (6.19 CU/YDS)

~ BASE - 9,695# (2.39 CU/YDS)



5204 NORTH STARR RD  
NEWMAN LAKE, WA 99025  
(509) 226-5050  
www.inwprecast.com



## REINFORCEMENT

~ LID	~ WALL
SHORT - #5 BAR @ 6" O.C.	SHORT - #4 BAR @ 12" O.C. HORIZONTAL
LONG - #5 BAR @ 12" O.C.	LONG - #4 BAR @ 6" O.C. VERTICAL
OPENINGS - (4) #5 DIAGONAL BARS, TYP.	
~ BAFFLE WALL	
SHORT - #4 BAR @ 12" O.C.	
LONG - #4 BAR @ 7" O.C.	
~ BASE - #4 BAR @ 8" O.C.E.W.	

INLAND NORTHWEST PRECAST  
IDAHO & WASHINGTON  
\*ENGINEERING AVAILABLE UPON REQUEST