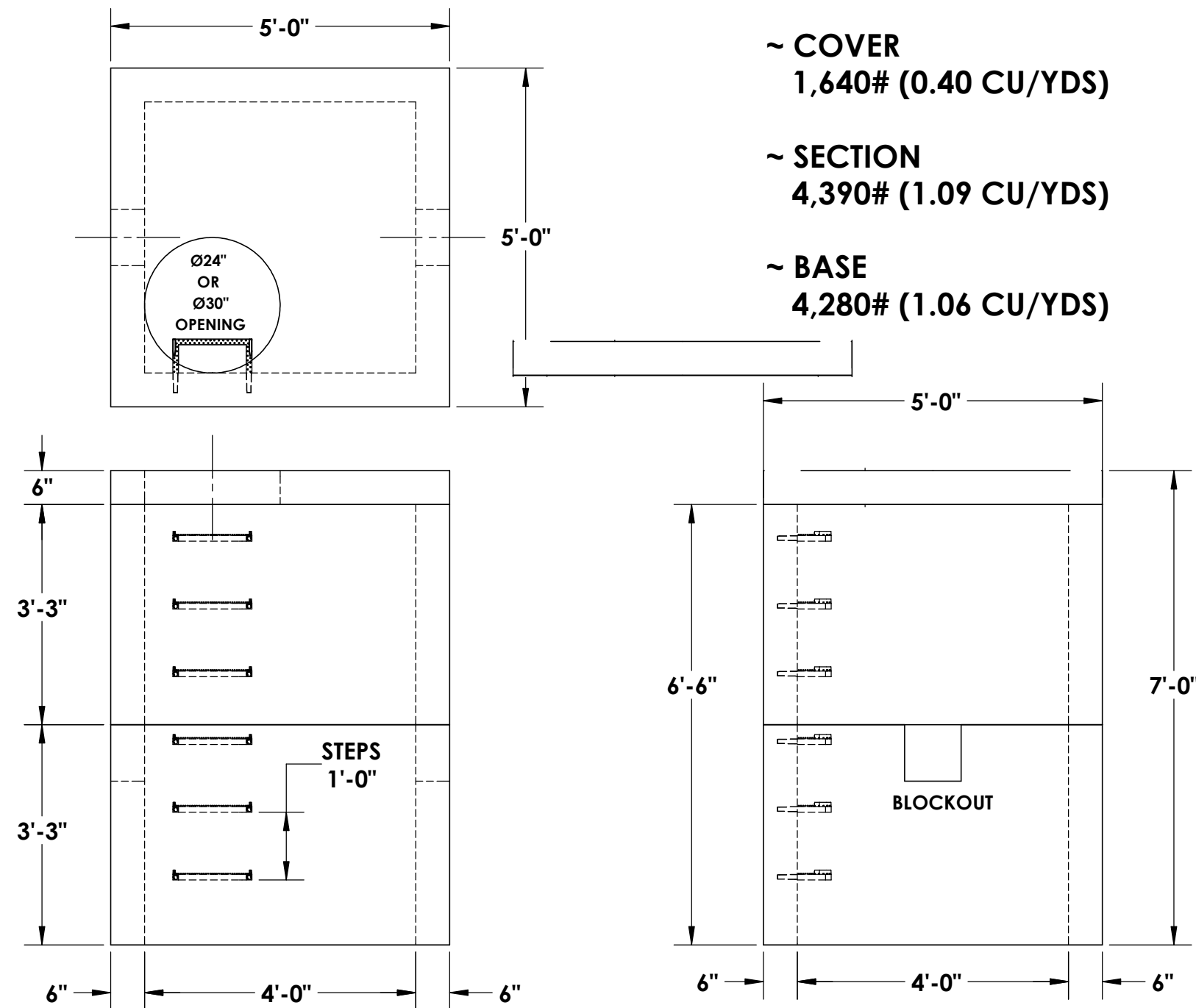


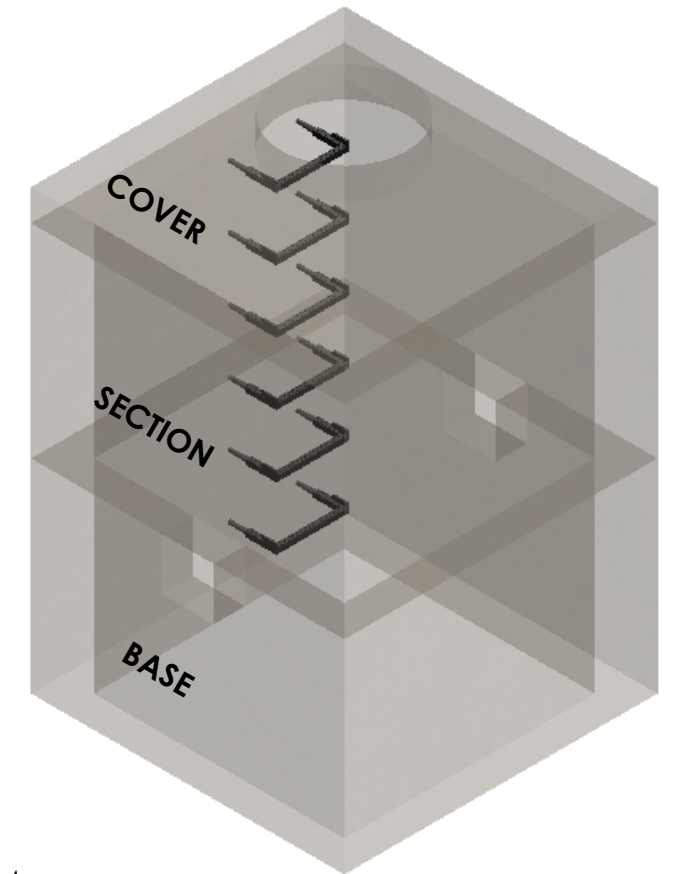
# 4'x4' UTILITY VAULT



~ COVER  
1,640# (0.40 CU/YDS)

~ SECTION  
4,390# (1.09 CU/YDS)

~ BASE  
4,280# (1.06 CU/YDS)



**CONCRETE:**  
4,000 PSI MINIMUM

**REINFORCEMENT:**  
#4 BAR @ 12" O.C.E.W. THROUGHOUT

**BLOCKOUT:**  
SIZES AVAILABLE UPON REQUEST

**\*TRAFFIC RATED (8" THICK) COVER AVAILABLE**

© INLAND NORTHWEST PRECAST



## INLAND NORTH WEST PRECAST

5516 NORTH STARR RD PO BOX 610, NEWMAN LAKE, WA 99025 (509) 226-5050



ALL UTILITY VAULTS MEET AND ARE CONSTRUCTED IN ACCORDANCE WITH ASTM C858