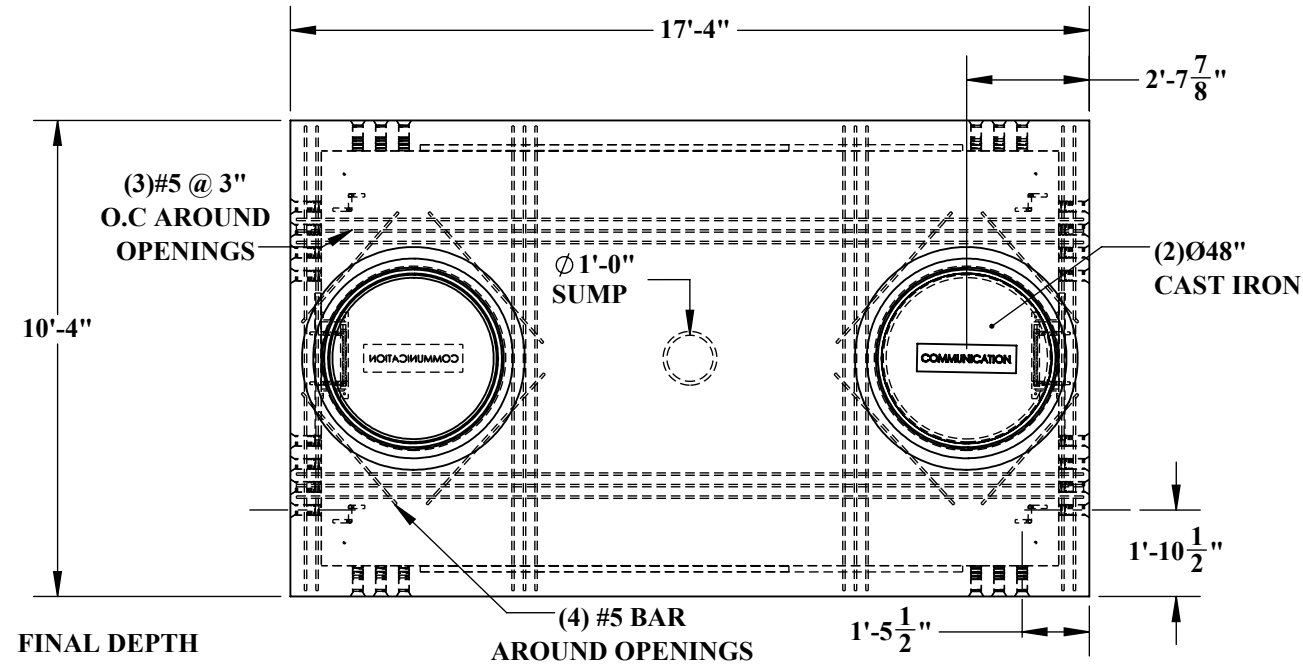


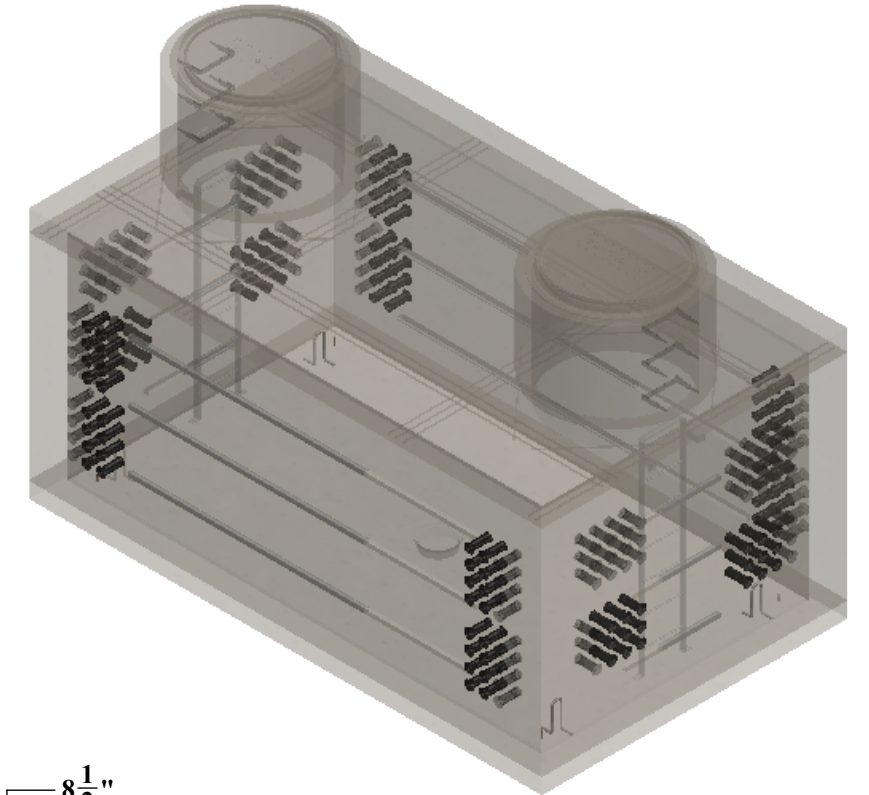


TELECOM VAULT LARGE

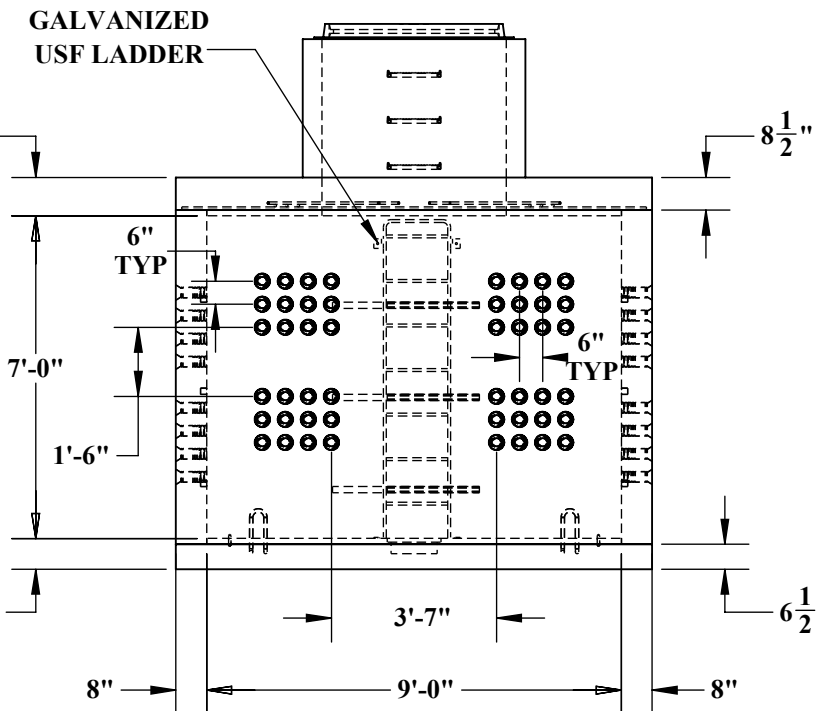
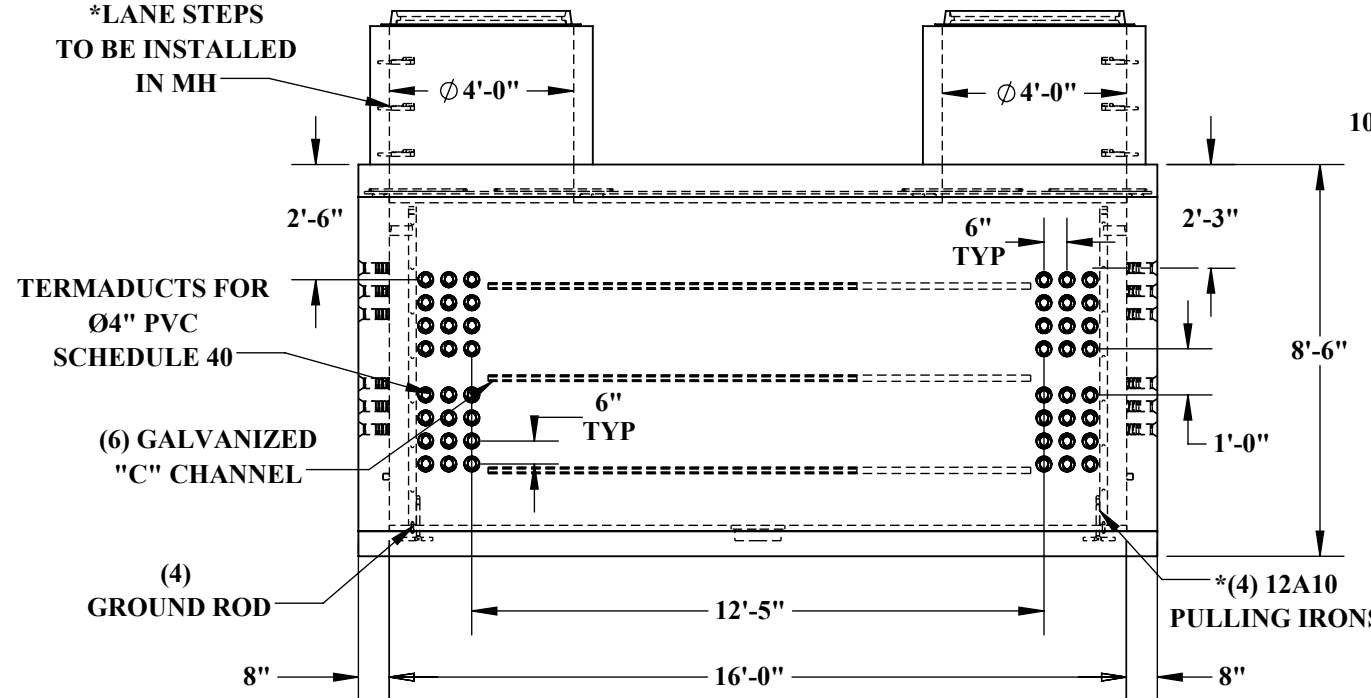


~WEIGHT

- LID - 16,450# (4.06 CU/YDS)
- WALL - 34,580# (8.54 CU/YDS)
- BASE - 15,495# (3.83 CU/YDS)



FINAL DEPTH OF MH TBD
*LANE STEPS TO BE INSTALLED IN MH



~REINFORCEMENT

- LID
SHORT- #5 @ 6" O.C
LONG - #5 #12" O.C (2" CLR)
- WALLS- #4 @ 12" O.C.E.W (1-1/2" CLR FROM INSIDE FACE)
- BASE - #5 @ 12" O.C.E.W (2" CLR FROM TOP)



5204 NORTH STARR RD PO BOX 610
NEWMAN LAKE, WA 99025
(509) 226-5050
www.inwprecast.com



PROJECT:	
CONTRACTOR:	DATE: