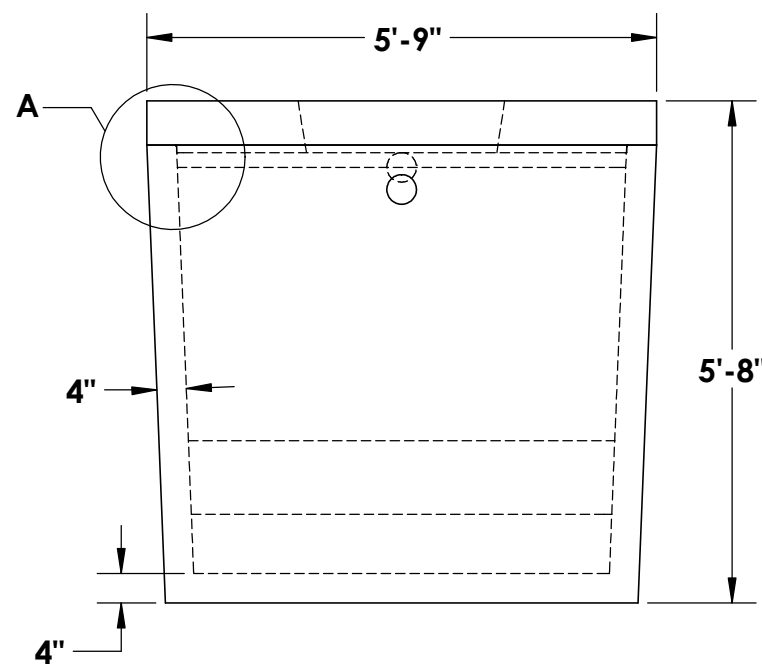
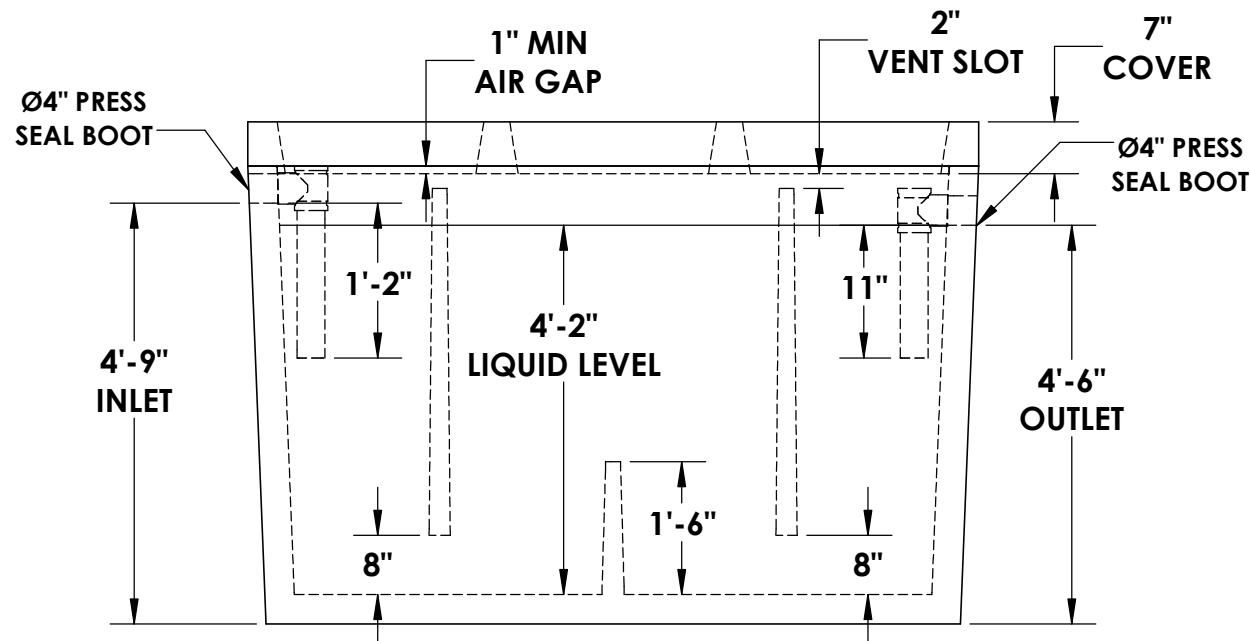
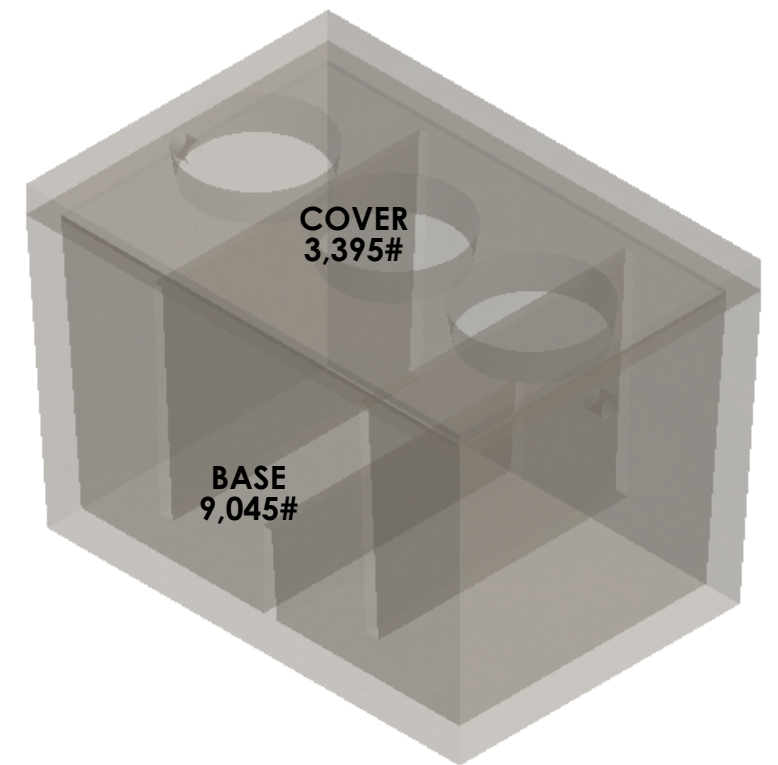
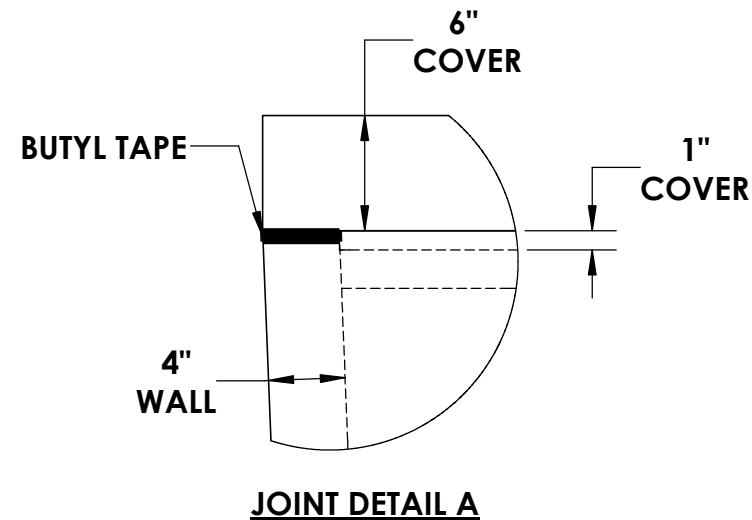
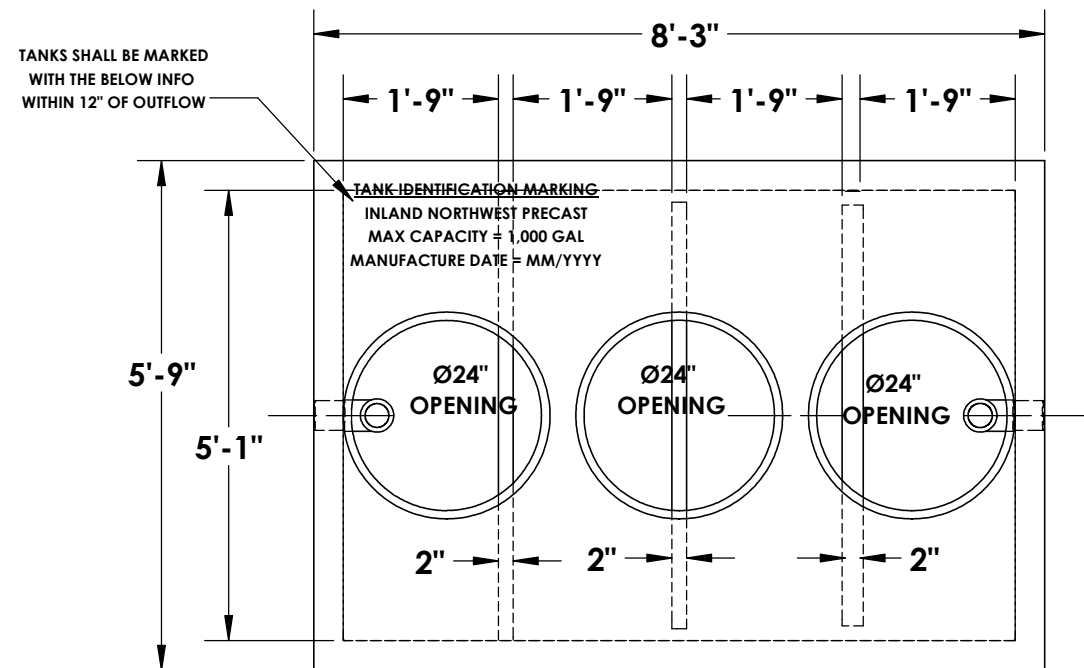




# 1000 GALLON DOUBLE COMPARTMENT TRAFFIC RATED OIL/WATER SEPARATOR (SPOKANE COUNTY)



\* **CONCRETE:**  
4,000 PSI MINIMUM

\* **RISER/FLANGE ADAPTERS:**  
AVAILABLE UPON REQUEST

**NOTES:**

- ~ BEDDING MUST BE COMPACTED AND AREA AROUND TANK MUST BE BACKFILLED PRIOR TO PUTTING INTO SERVICE
- ~ STRUCTURAL ENGINEERING CALCULATIONS AVAILABLE UPON REQUEST
- ~ 2-1/2" TAPER FROM TOP TO BOTTOM OF TANK
- ~ Ø6" PRESS SEAL BOOT AT INLET & OUTLET

© INLAND NORTHWEST PRECAST



5204 NORTH STARR RD  
NEWMAN LAKE, WA 99025  
(509) 226-5050  
www.inwprecast.com



**REINFORCEMENT:**

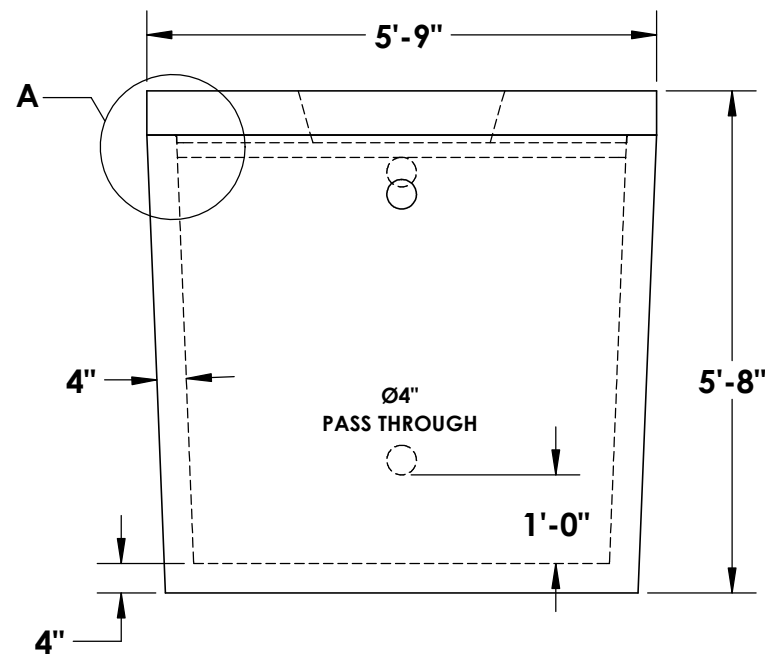
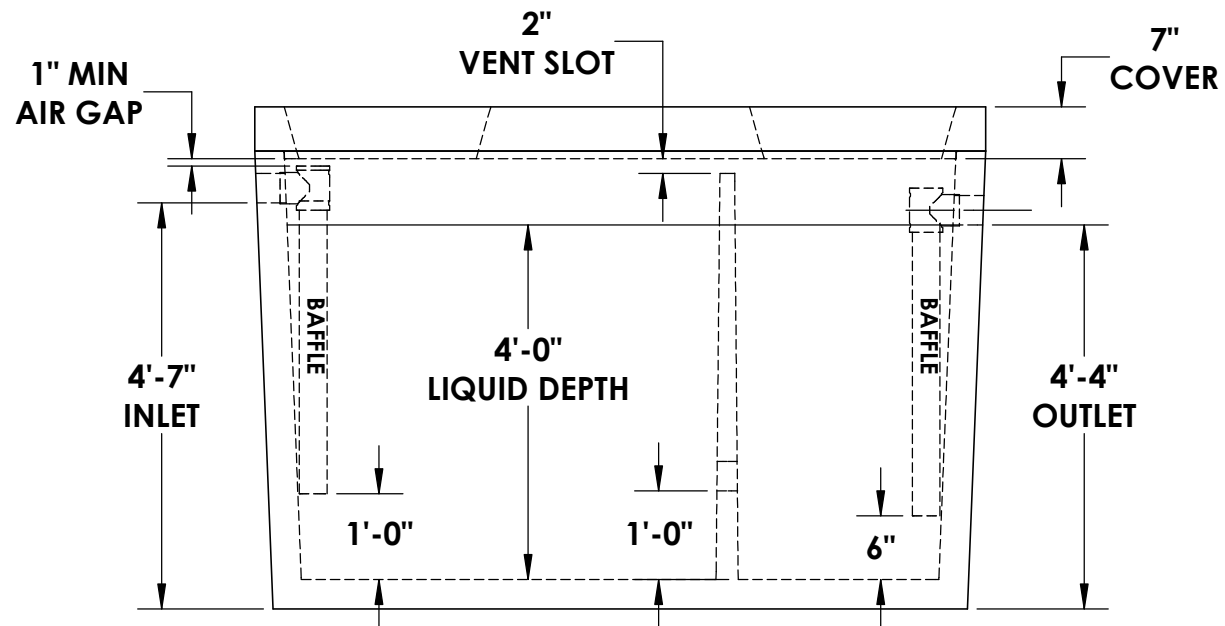
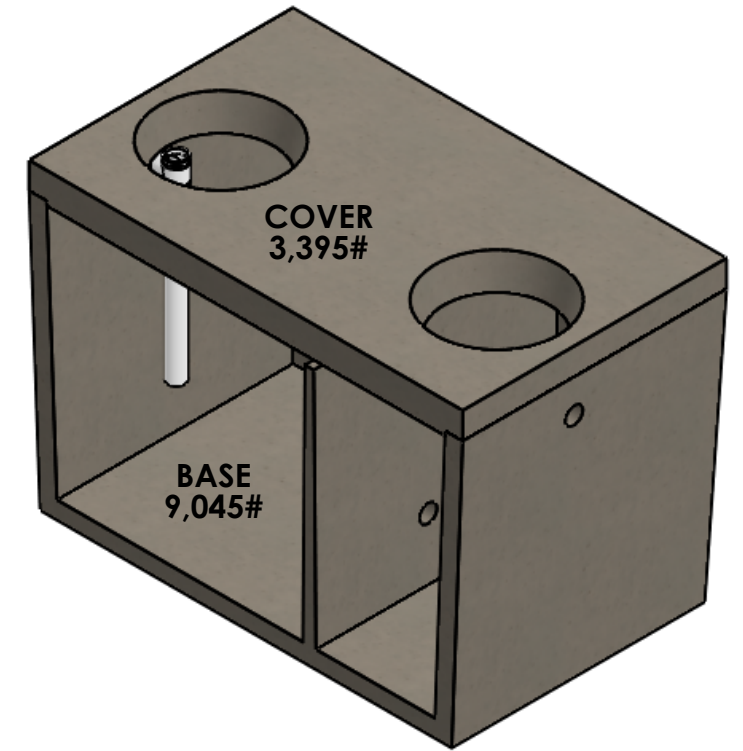
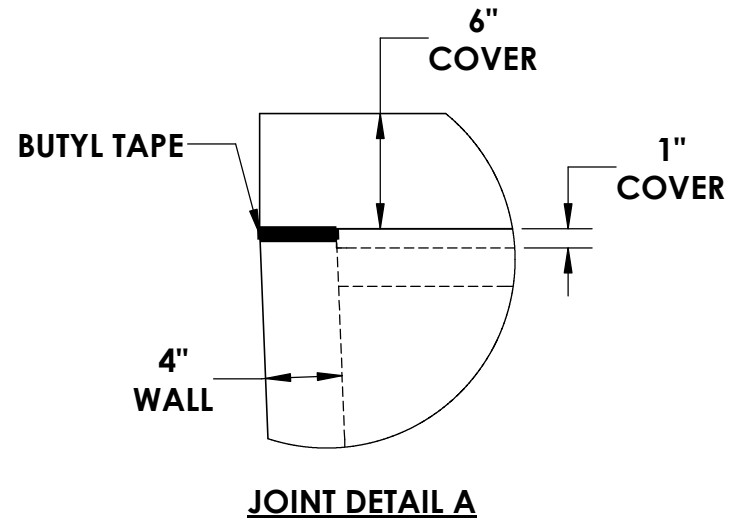
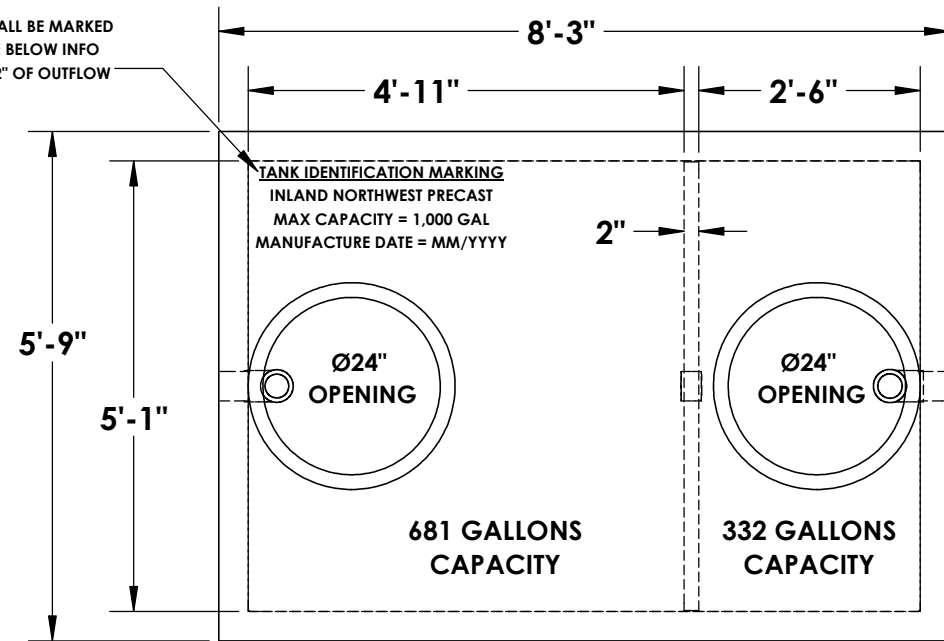
- COVER:**
- ~ TRANSVERSE #4 @ 6"
  - ~ LONGITUDINAL #4 @ 1'-0"
- BASE WALLS:**
- ~ 4x4W4xW4 WIRE MESH IN WALLS
- BASE FLOOR:**
- ~ TRANSVERSE #4 @ 9"
  - ~ LONGITUDINAL #4 @ 1'-0"

\*ALL TANKS ARE MADE IN ACCORDANCE WITH ASTM C1227 - 13 (STANDARD SPECIFICATION FOR PRECAST CONCRETE SEPTIC TANKS)



# 1000 GALLON OIL/WATER SEPARATOR - TRAFFIC RATED

TANKS SHALL BE MARKED WITH THE BELOW INFO WITHIN 12" OF OUTFLOW



\* CONCRETE: 4,000 PSI MINIMUM

\* RISER/FLANGE ADAPTERS: AVAILABLE UPON REQUEST

**NOTES:**

- ~ BEDDING MUST BE COMPACTED AND AREA AROUND TANK MUST BE BACKFILLED PRIOR TO PUTTING INTO SERVICE
- ~ Ø4" PRESS SEAL BOOTS PROVIDED AT INLET & OUTLET
- ~ STRUCTURAL ENGINEERING CALCULATIONS AVAILABLE UPON REQUEST
- ~ 2-1/2" TAPER FROM TOP TO BOTTOM OF TANK

© INLAND NORTHWEST PRECAST



5204 NORTH STARR RD PO BOX 610  
 NEWMAN LAKE, WA 99025  
 (509) 226-5050  
 www.inwprecast.com



**REINFORCEMENT:**

- COVER:**
- ~ TRANSVERSE #4 @ 6"
  - ~ LONGITUDINAL #4 @ 1'-0"
- BASE WALLS:**
- ~ 4x4W4xW4 WIRE MESH IN WALLS
- BASE FLOOR:**
- ~ TRANSVERSE #4 @ 9"
  - ~ LOGITUDINAL #4 @ 1'-0"

\*ALL TANKS ARE MADE IN ACCORDANCE WITH ASTM C1227 - 13 (STANDARD SPECIFICATION FOR PRECAST CONCRETE SEPTIC TANKS)