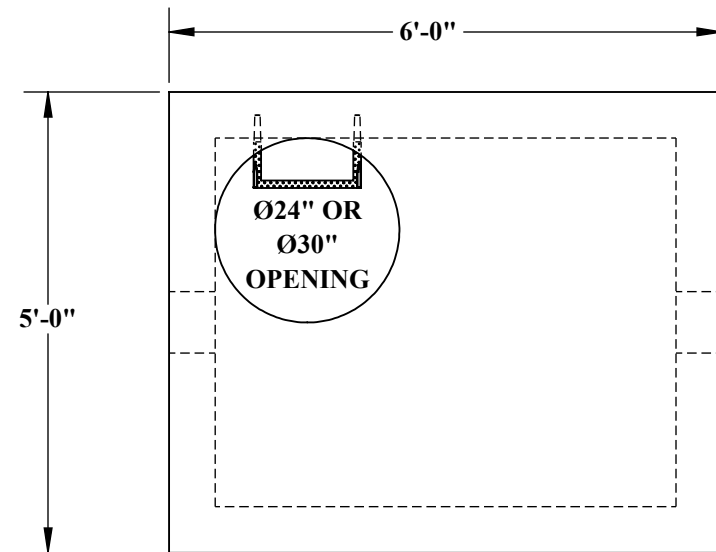


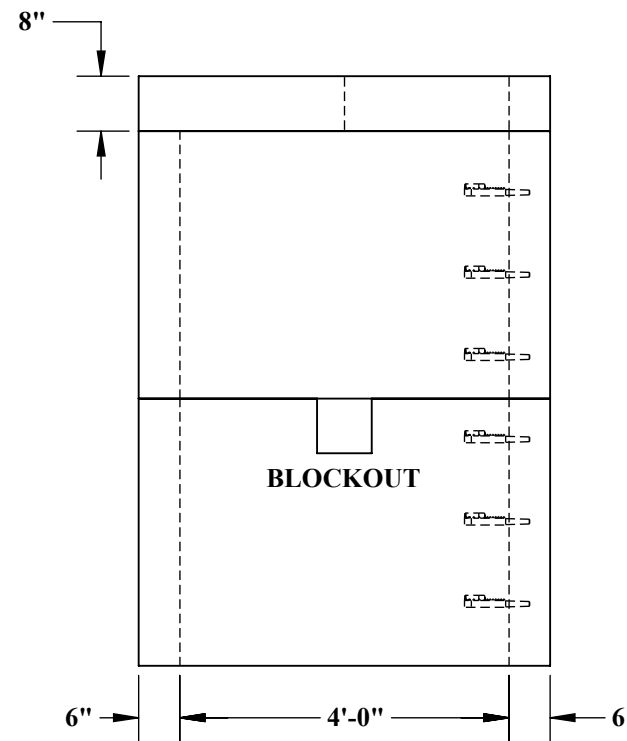
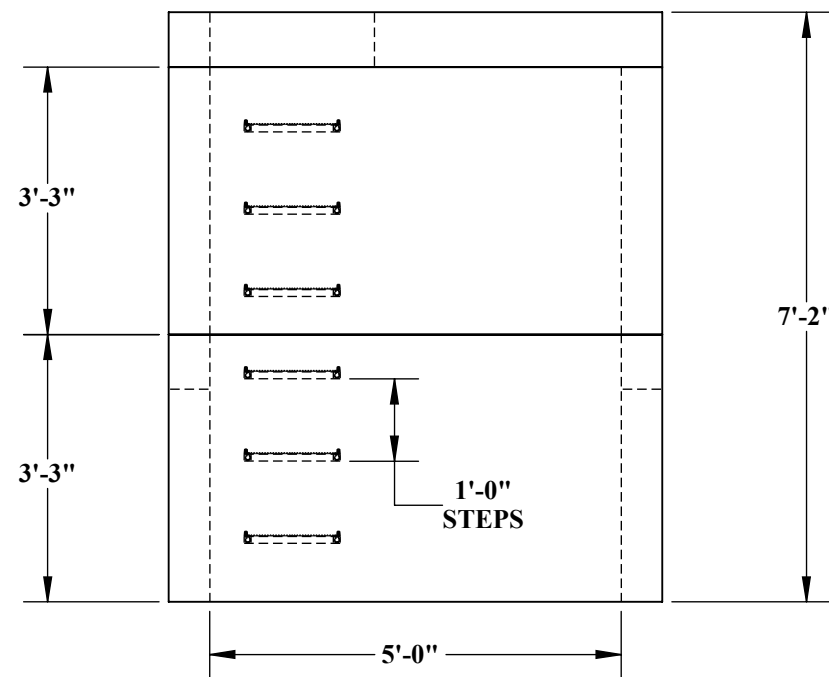
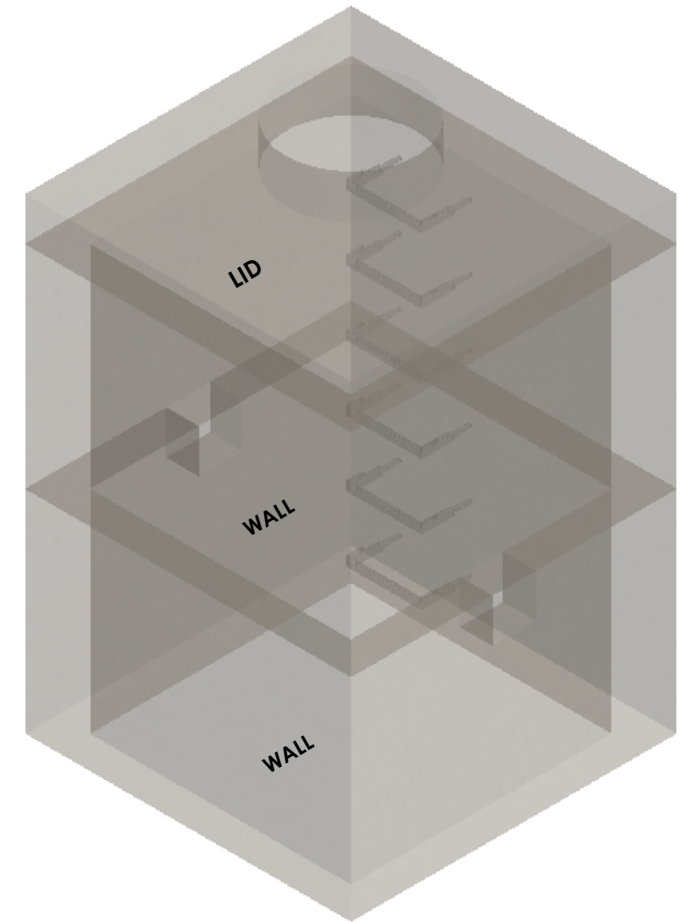


4'-0" x 5'-0" UTILITY VAULT



~ LID
- 2,690# (0.66 CU/YDS)

~ WALLS
- 4,875# (1.20 CU/YDS)



CONCRETE:
4,000 PSI MINIMUM

REINFORCEMENT:
LID - #5 @ 5" O.C TRANSVERSE
#5 @ 12" O.C LONGITUDINAL
WALLS - #4 @ 8" O.C.E.W

BLOCKOUT:
SIZES AVAILABLE UPON REQUEST



5204 NORTH STARR RD PO BOX 610
NEWMAN LAKE, WA 99025
(509) 226-5050
www.inwprecast.com



*ALL UTILITY VAULTS MEET
AND ARE CONSTRUCTED IN
ACCORDANCE WITH
ASTM C858