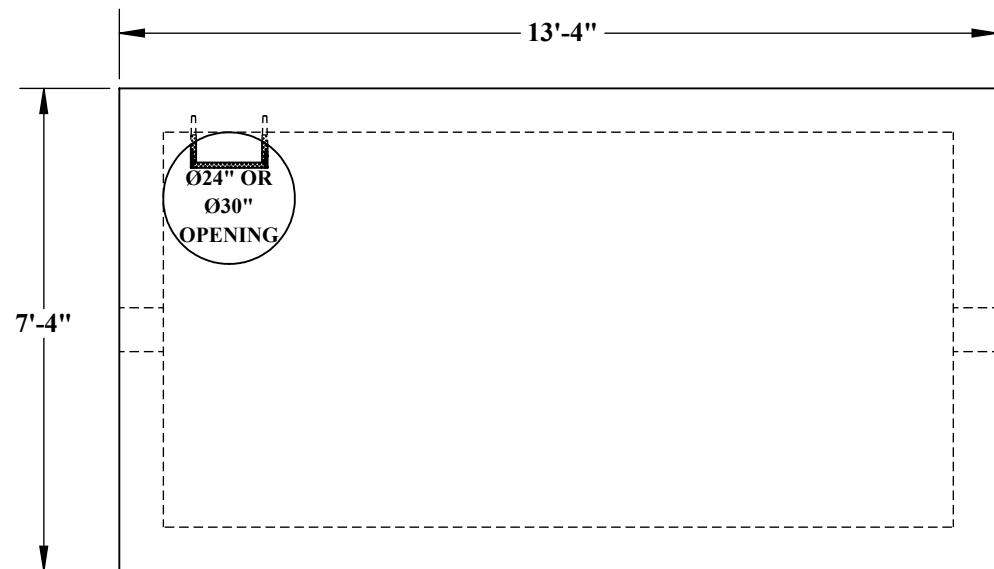


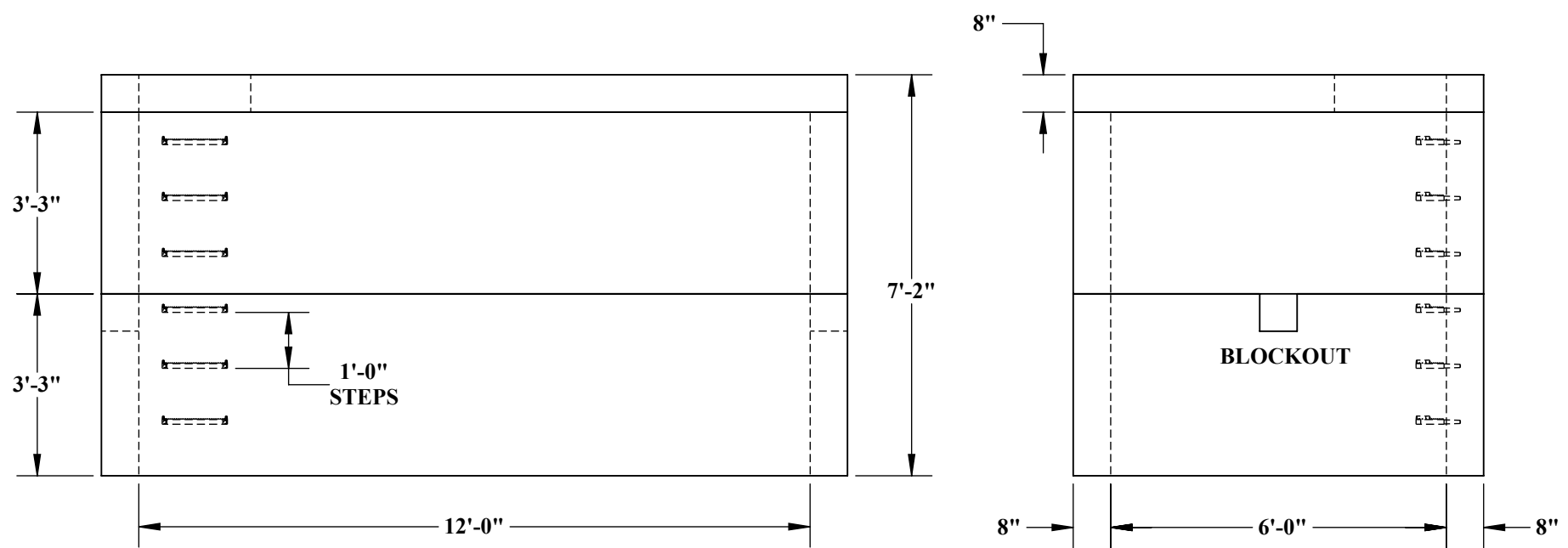
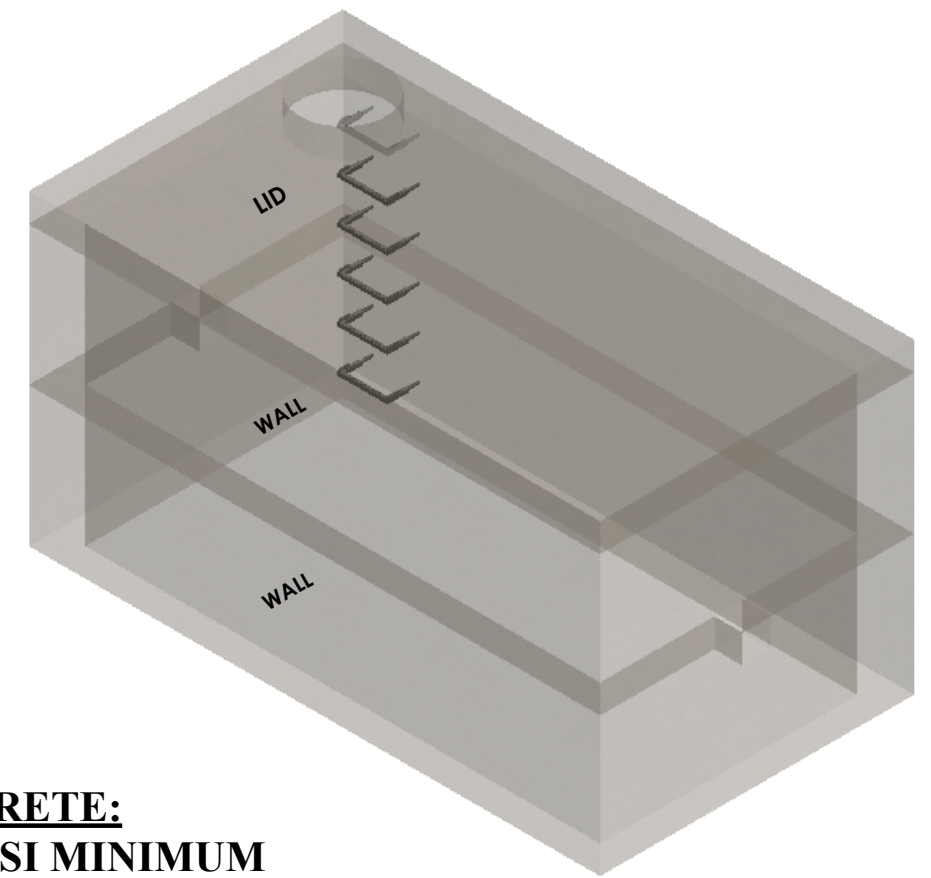


6'-0" x 12'-0" UTILITY VAULT



~ LID
 - 9,465# (2.34 CU/YDS)

~ WALLS
 - 12,570# (3.10 CU/YDS)



CONCRETE:
 4,000 PSI MINIMUM

REINFORCEMENT:
 LID - #5 @ 5" O.C TRANSVERSE
 #5 @ 9" O.C LONGITUDINAL
 WALLS - #4 @ 12" O.C VERTICAL
 #5 @ 6" O.C HORIZONTAL

BLOCKOUT:
 SIZES AVAILABLE UPON REQUEST



5204 NORTH STARR RD PO BOX 610
 NEWMAN LAKE, WA 99025
 (509) 226-5050
 www.inwprecast.com



*ALL UTILITY VAULTS MEET AND ARE CONSTRUCTED IN ACCORDANCE WITH ASTM C858