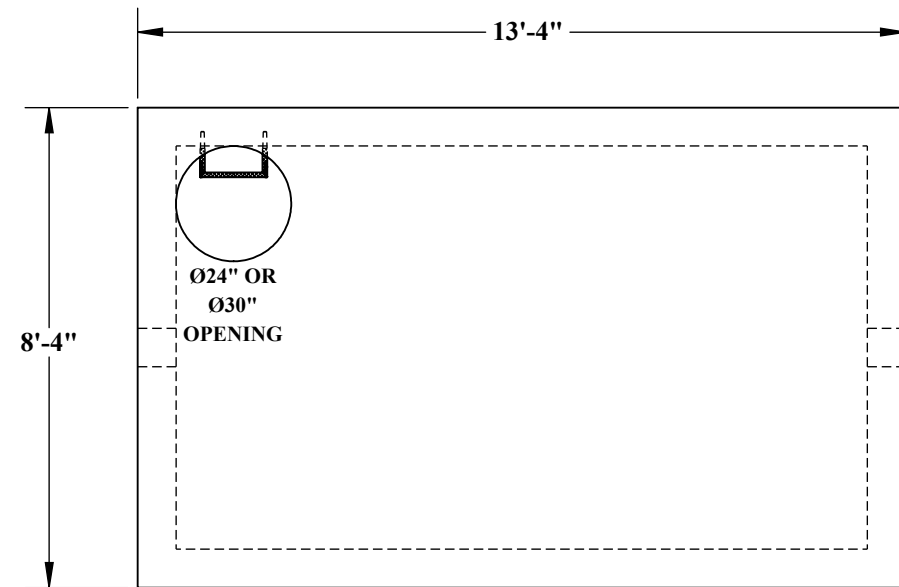
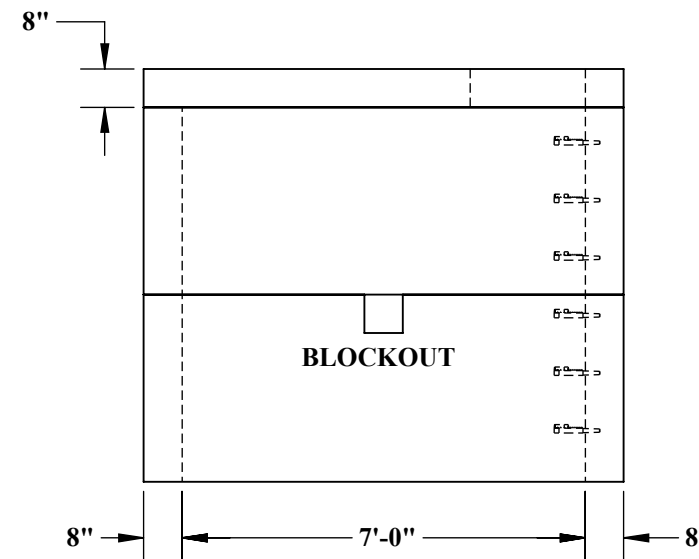
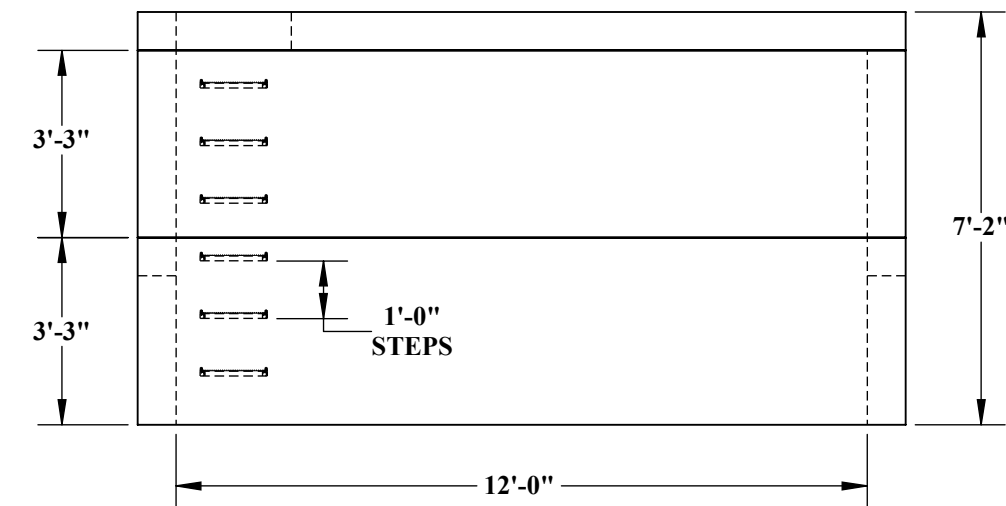
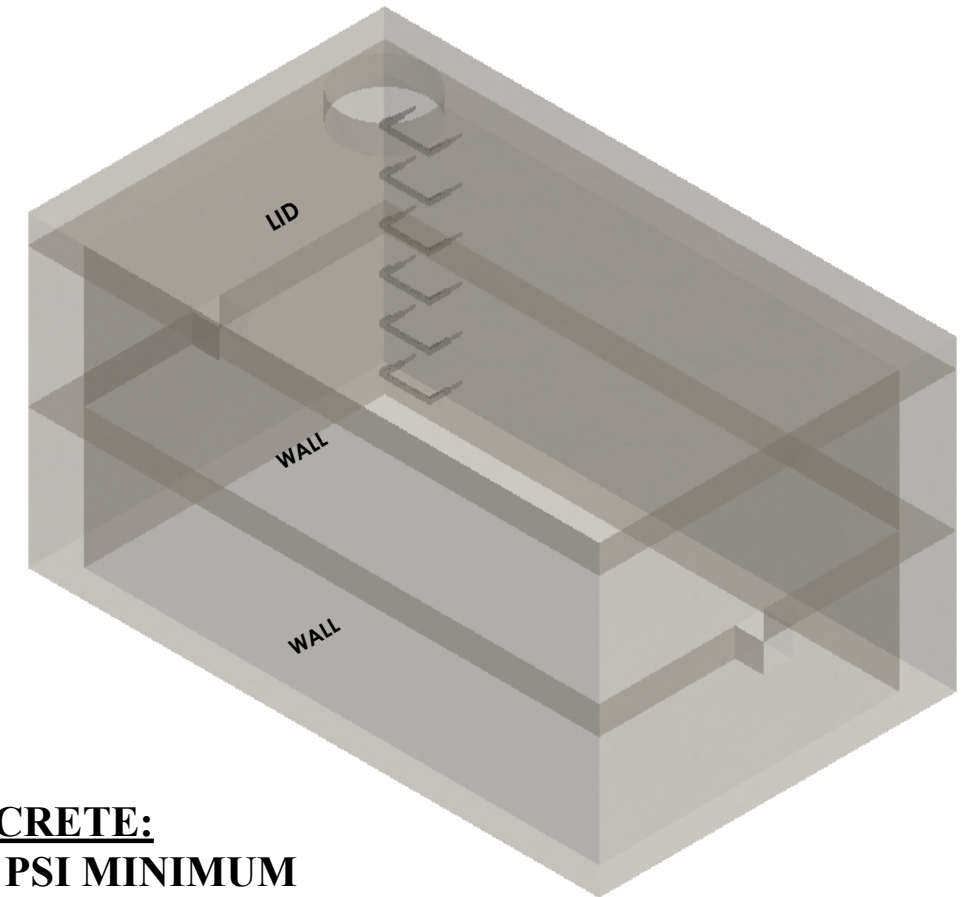




7'-0" x 12'-0" UTILITY VAULT



- ~ LID
- 10,800# (2.67 CU/YDS)
- ~ WALLS
- 13,215# (3.26 CU/YDS)



CONCRETE:
4,000 PSI MINIMUM

REINFORCEMENT:
LID - #5 @ 5" O.C. TRANSVERSE
#5 @ 8" O.C LONGITUDINAL
WALLS - #4 @ 9" O.C VERTICAL
#6 @ 6" O.C HORIZONTAL

BLOCKOUT:
SIZES AVAILABLE UPON REQUEST



5204 NORTH STARR RD PO BOX 610
NEWMAN LAKE, WA 99025
(509) 226-5050
www.inwprecast.com



*ALL UTILITY VAULTS MEET
AND ARE CONSTRUCTED IN
ACCORDANCE WITH
ASTM C858