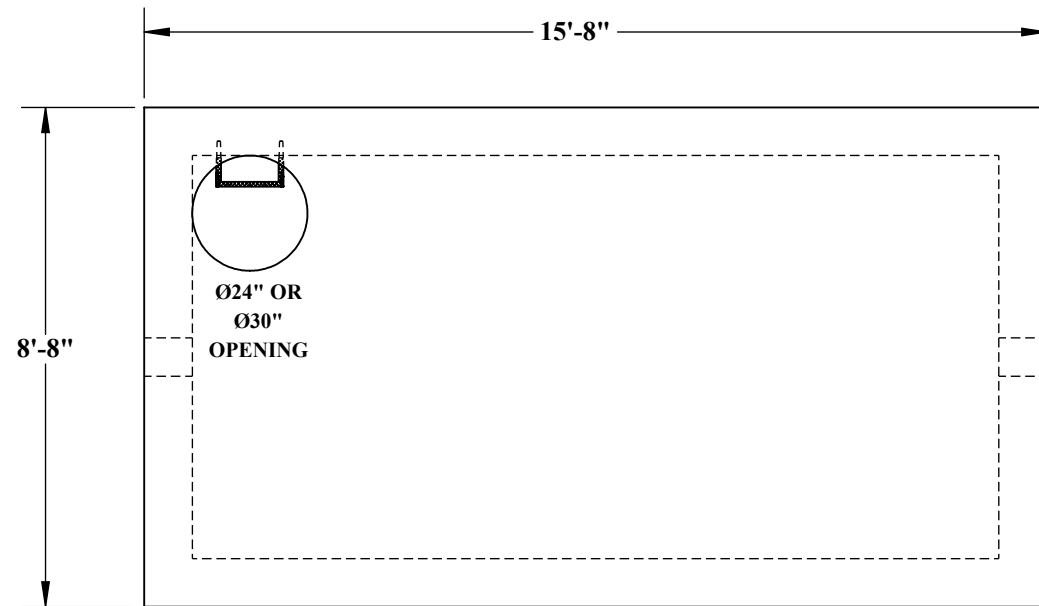
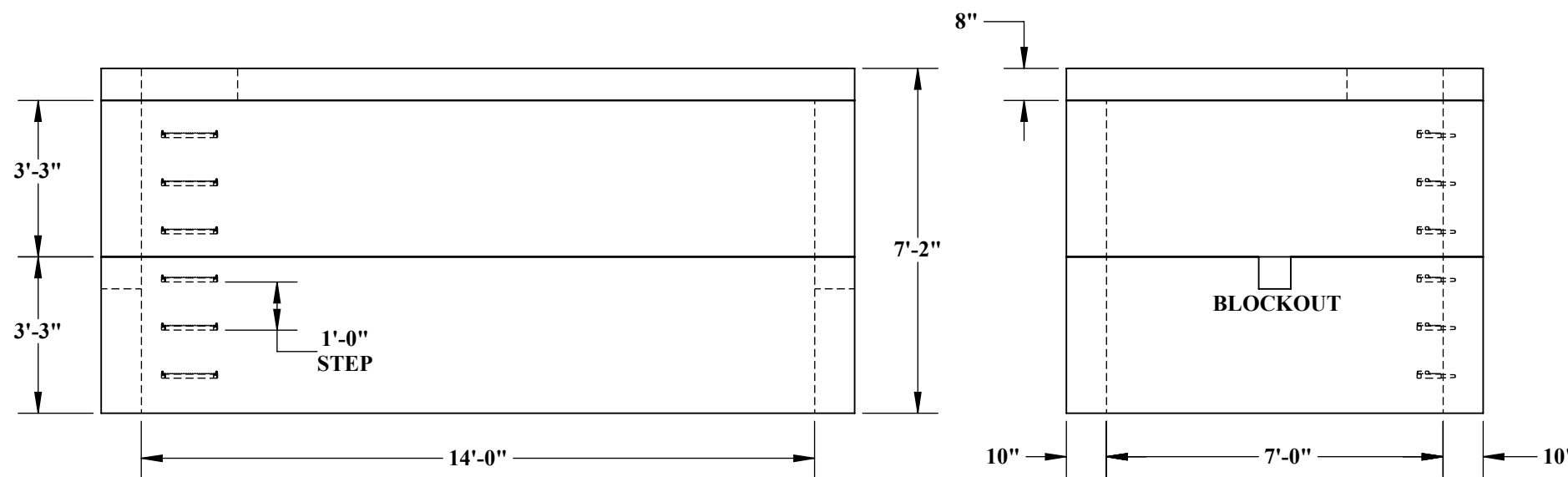
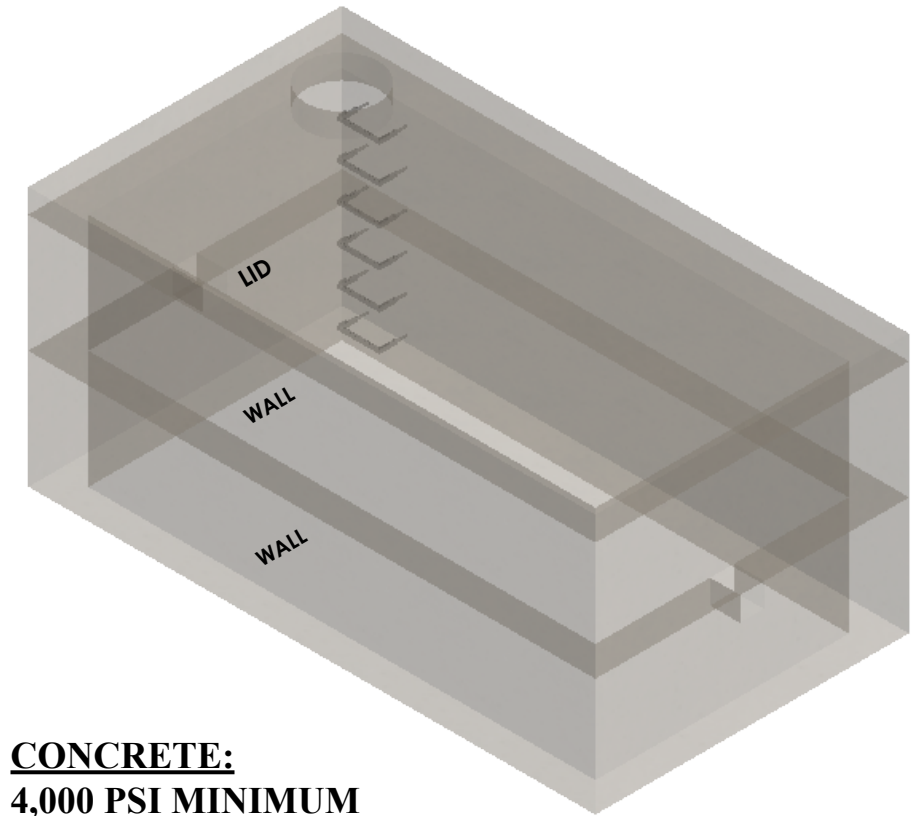




7'-0" x 14'-0" UTILITY VAULT



- ~ LID
- 13,265# (3.27 CU/YDS)
- ~ WALLS
- 18,420# (4.55 CU/YDS)



CONCRETE:
4,000 PSI MINIMUM

REINFORCMENT:
LID - #5 @ 5" O.C. TRANSVERSE
#5 @ 8" O.C. LONGITUDINAL
WALLS - DOUBLE MAT
#4 @ 12" O.C. VERTICAL (BOTH MATS)
#5 @ 8" O.C. HORIZONTAL (BOTH MATS)

BLOCKOUT:
SIZES AVAILABLE UPON REQUEST



5204 NORTH STARR RD PO BOX 610
NEWMAN LAKE, WA 99025
(509) 226-5050
www.inwprecast.com



*ALL UTILITY VAULTS MEET
AND ARE CONSTRUCTED IN
ACCORDANCE WITH
ASTM C858