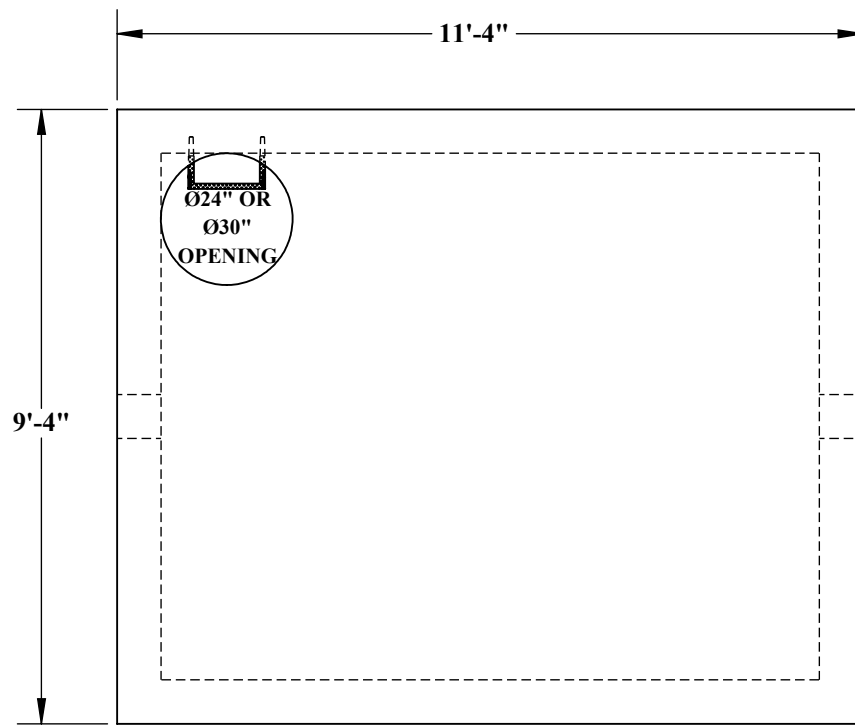


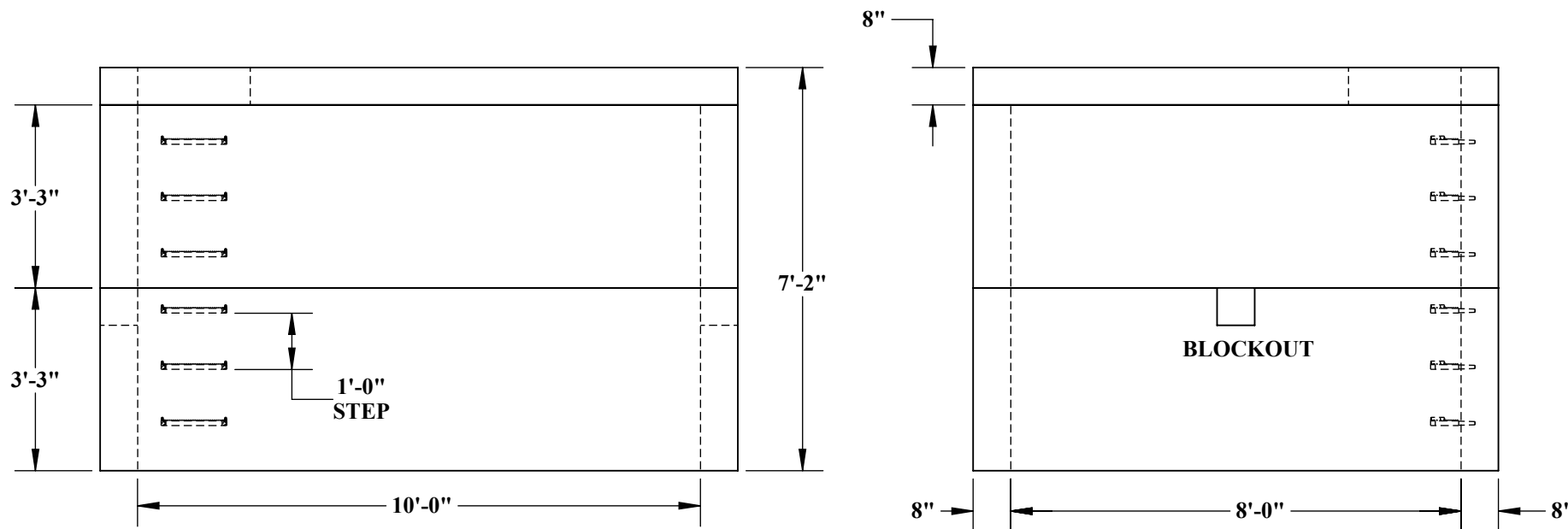
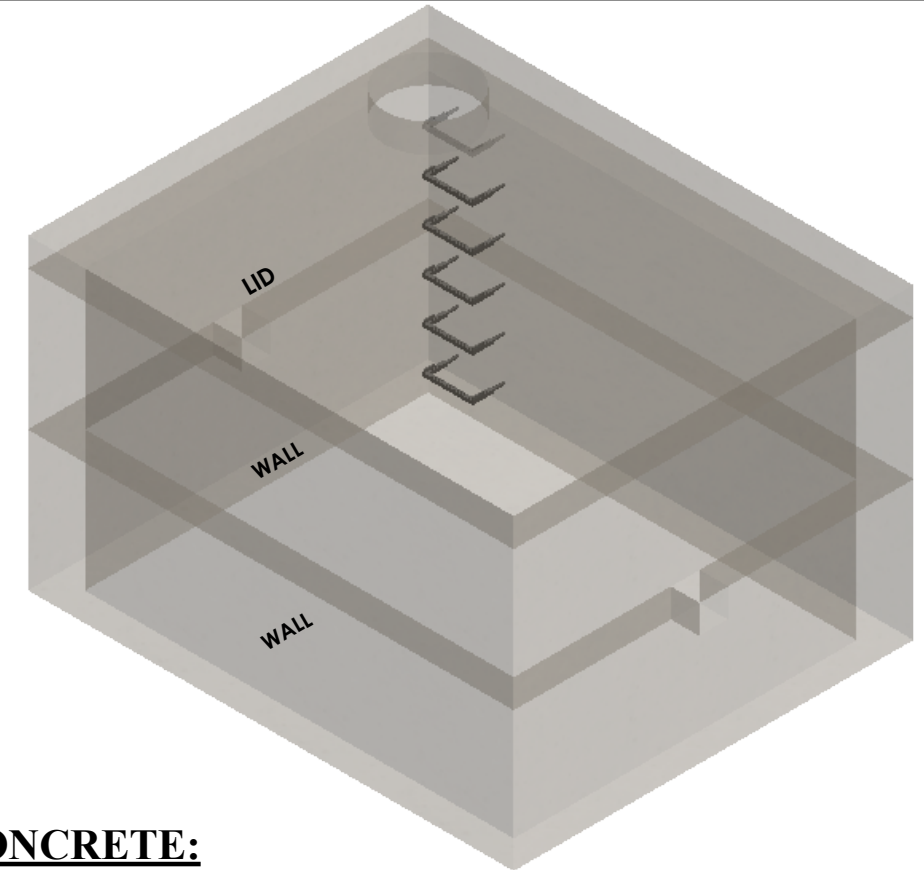


8'-0" x 10'-0" UTILITY VAULT



~ LID
 - 10,265# (2.53 CU/YDS)

~ WALLS
 - 12,570# (3.10 CU/YDS)



CONCRETE:
 4,000 PSI MINIMUM

REINFORCMENT:
 LID - #6 @ 8" O.C. TRANSVERSE
 #6 @ 10" O.C. LONGITUDINAL
 WALLS - #4 @ 12" O.C. VERTICAL
 #5 @ 6" O.C. HORIZONTAL

BLOCKOUT:
 SIZES AVAILABLE UPON REQUEST



5204 NORTH STARR RD PO BOX 610
 NEWMAN LAKE, WA 99025
 (509) 226-5050
 www.inwprecast.com



*ALL UTILITY VAULTS MEET
 AND ARE CONSTRUCTED IN
 ACCORDANCE WITH
 ASTM C858