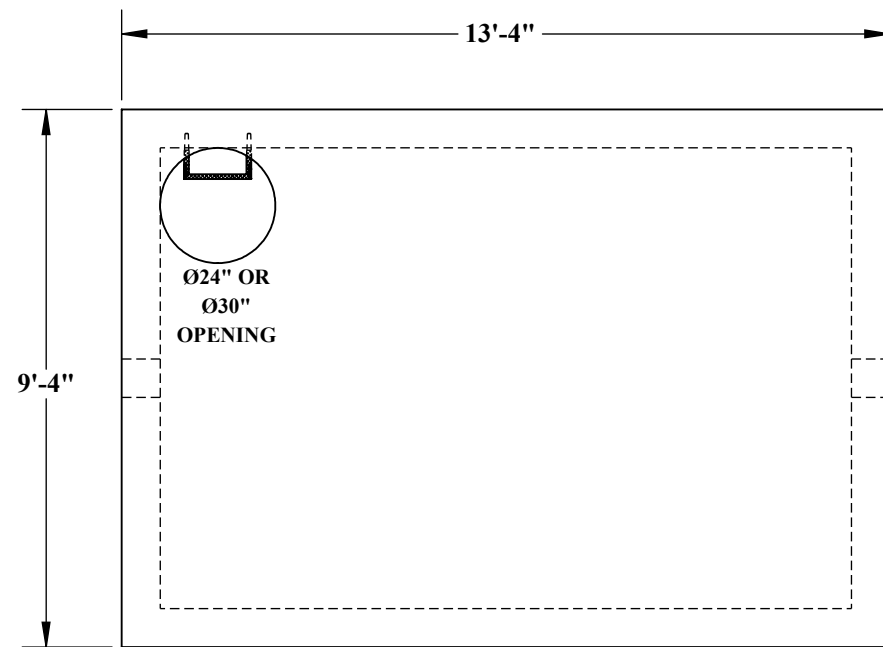


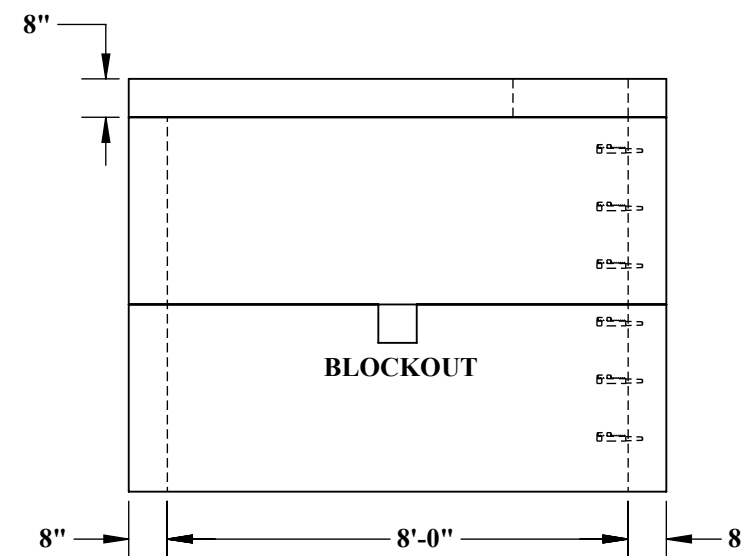
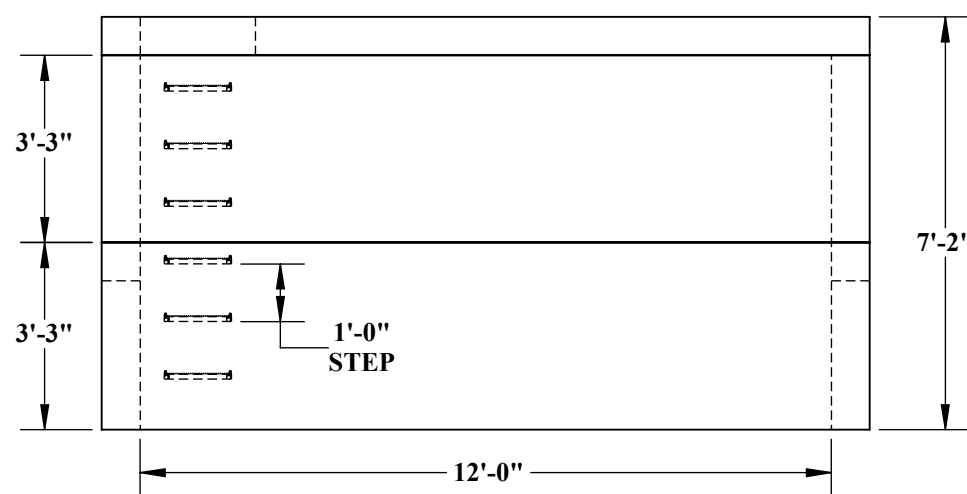
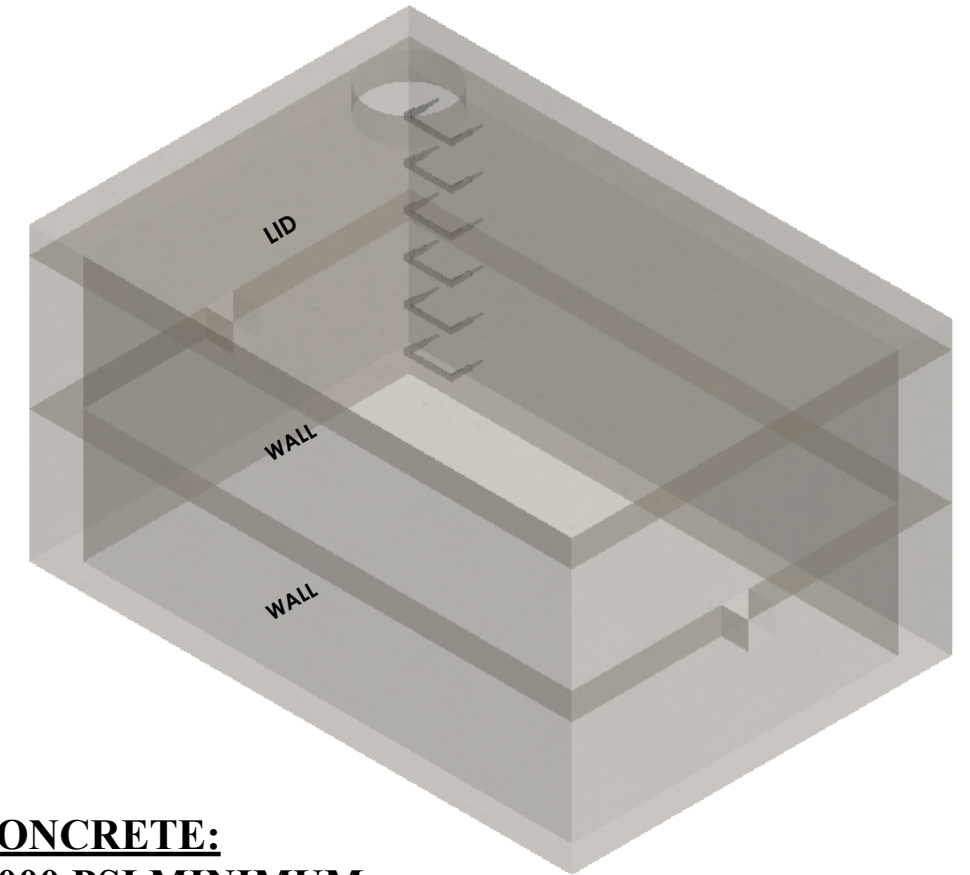


# 8'-0" x 12'-0" UTILITY VAULT



~ LID  
- 12,130# (3.00 CU/YDS)

~ WALLS  
- 13,870# (3.42 CU/YDS)



**CONCRETE:**  
4,000 PSI MINIMUM

**REINFORCMENT:**  
LID - #6 @ 7" O.C. TRANSVERSE  
#6 @ 10" O.C. LONGITUDINAL  
WALLS - #4 @ 9" O.C. VERTICAL  
#6 @ 6" O.C. HORIZONTAL

**BLOCKOUT:**  
SIZES AVAILABLE UPON REQUEST



5204 NORTH STARR RD PO BOX 610  
NEWMAN LAKE, WA 99025  
(509) 226-5050  
www.inwprecast.com



\*ALL UTILITY VAULTS MEET  
AND ARE CONSTRUCTED IN  
ACCORDANCE WITH  
ASTM C858